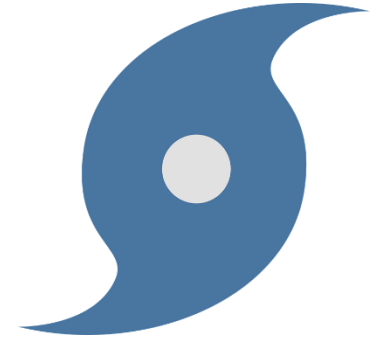




HURRICANE LAURA/MARCO REPORT



FOR IMMEDIATE RELEASE
MONDAY, AUGUST 24, 2020

ALLISON NATHAN GETZ
TAX ASSESSOR-COLLECTOR
CELL: (409) 351-3882

August 24th Daily Briefing

- For those that need assistance with evacuation – call 211 regardless of where you are located
- Port Arthur has called for a mandatory evacuation to begin at 6:00 am tomorrow morning
- After the 10:00 pm weather call tonight, the County will make the decision regarding further evacuations.
- Judge Branick will call for a mandatory evacuation of those south of Hwy 73 and anyone within 500 yards of Taylor Bayou and Hildebrandt Bayou
- Employees exempt from these evacuations are those of oil terminals, pipelines and oil supply facilities, petrochemical and refining complexes; employees of hospitals, trauma centers, nursing homes, convalescent facilities or other healthcare providers, utility and insurance adjusters, disaster clean personnel and governmental employees deemed essential by their employer
- Slides below detail the latest weather update from Roger Erickson

Key Points

Tropical Storm Laura



Lake Charles
WEATHER FORECAST OFFICE

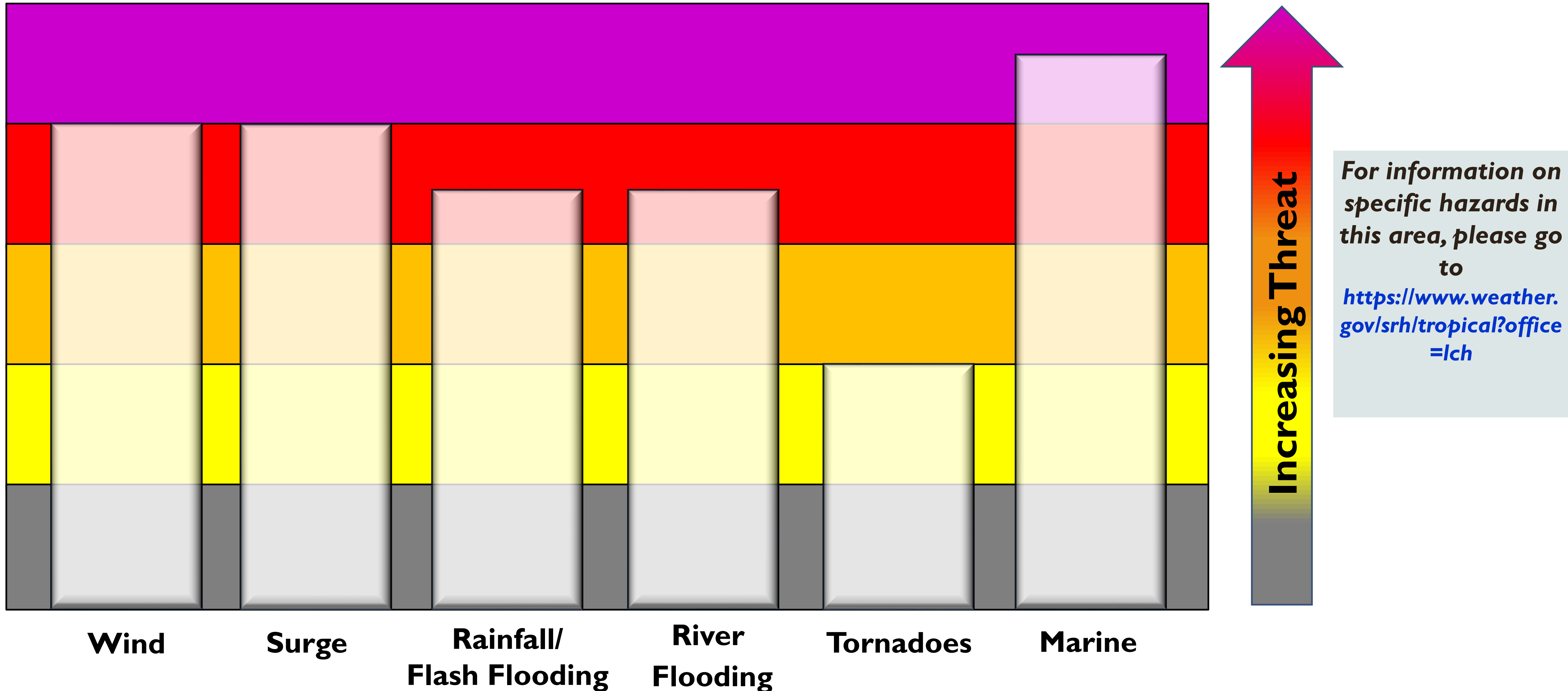
- Marco is not expected to cause any weather problems in our region tonight or tomorrow.
- Laura is expected to make landfall between southeast Texas and south central Louisiana as a category two hurricane late Wednesday or early Thursday.
- The average error for hurricane forecasts is 70 to 100 miles off for two to three days in advance of landfall, so do not focus on the individual forecast points, but use the error cone instead!
- Everyone should be preparing for a category three hurricane due to the average forecast errors when it comes to wind speeds (± 15 -20 mph for 2-3 days in advance) .

Threat Levels

Tropical Storm Laura



Lake Charles
WEATHER FORECAST OFFICE

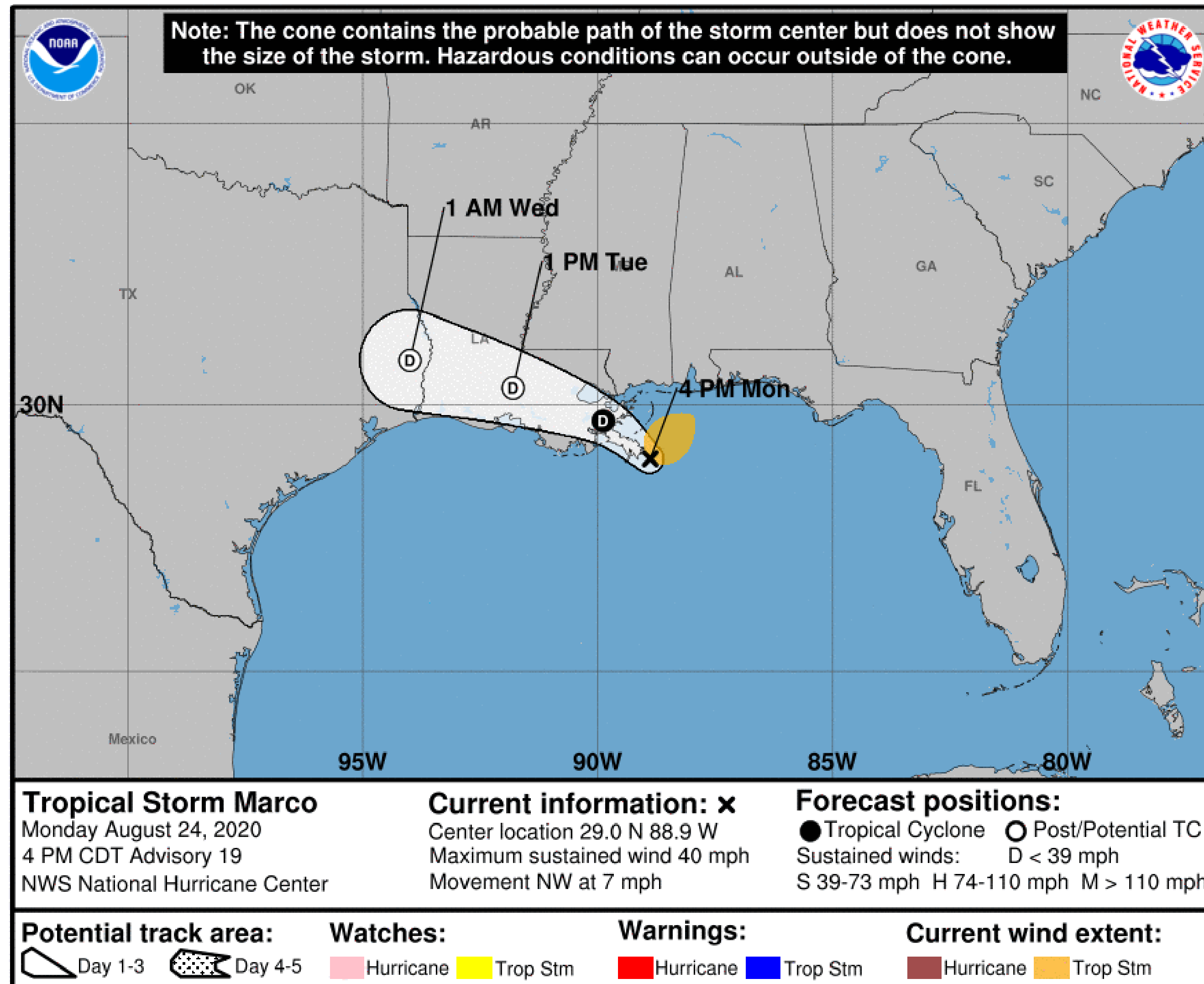


Situation Overview

Tropical Storm Marco



Lake Charles
WEATHER FORECAST OFFICE



- Marco is continuing to weaken.
- The tropical storm warnings have been discontinued everywhere.
- Most of the rain associated with Marco is well to the east of the system.

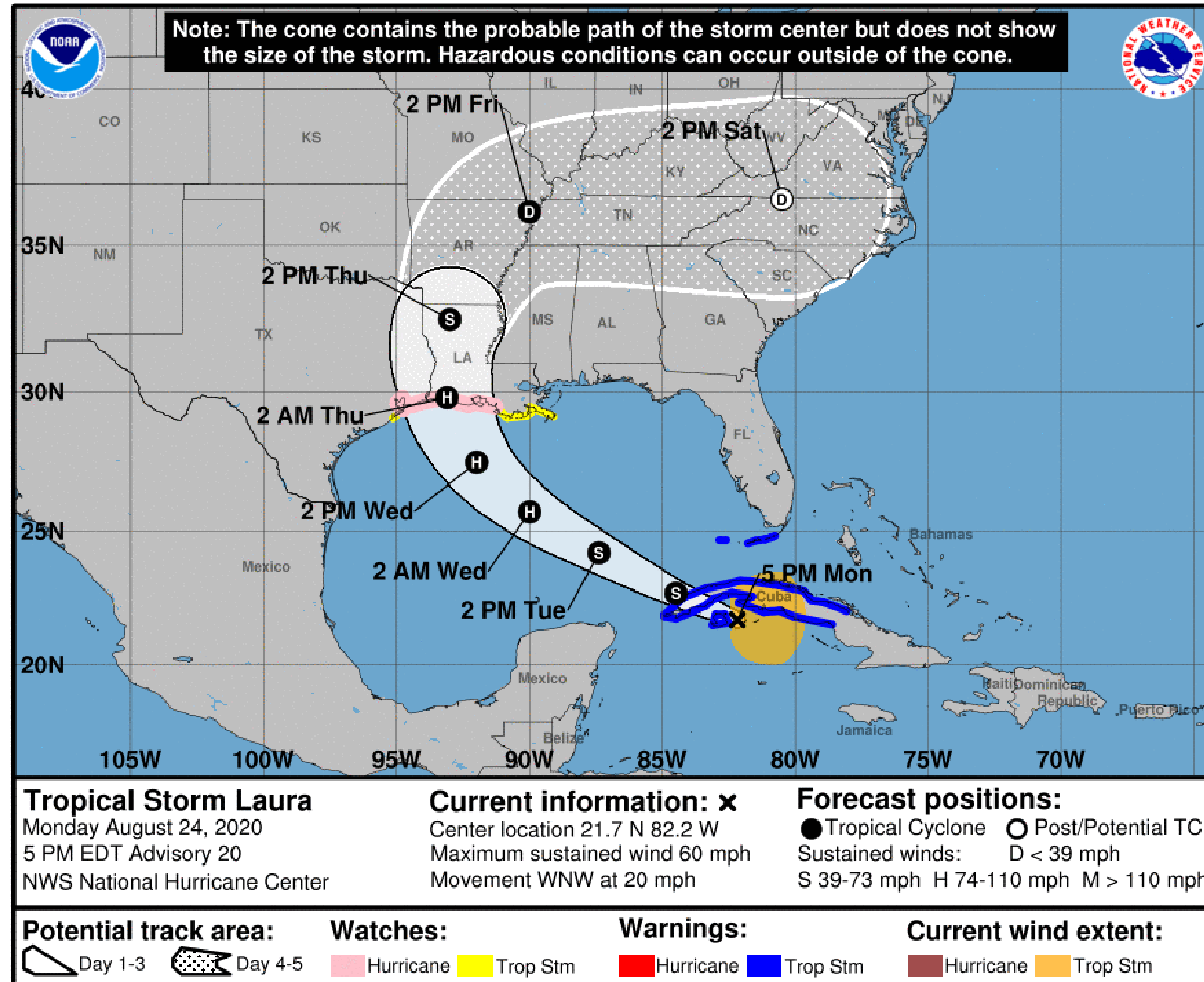
NOTE: Do not focus on the exact track. Impacts can occur well outside the area enclosed by the cone.

Situation Overview

Tropical Storm Laura



Lake Charles
WEATHER FORECAST OFFICE



- Laura will enter the southeastern Gulf of Mexico tonight.
- Laura will strengthen to a hurricane in the Gulf before making landfall in southeast Texas to south central Louisiana late Wednesday/early Thursday, possibly as a major hurricane (category 3).

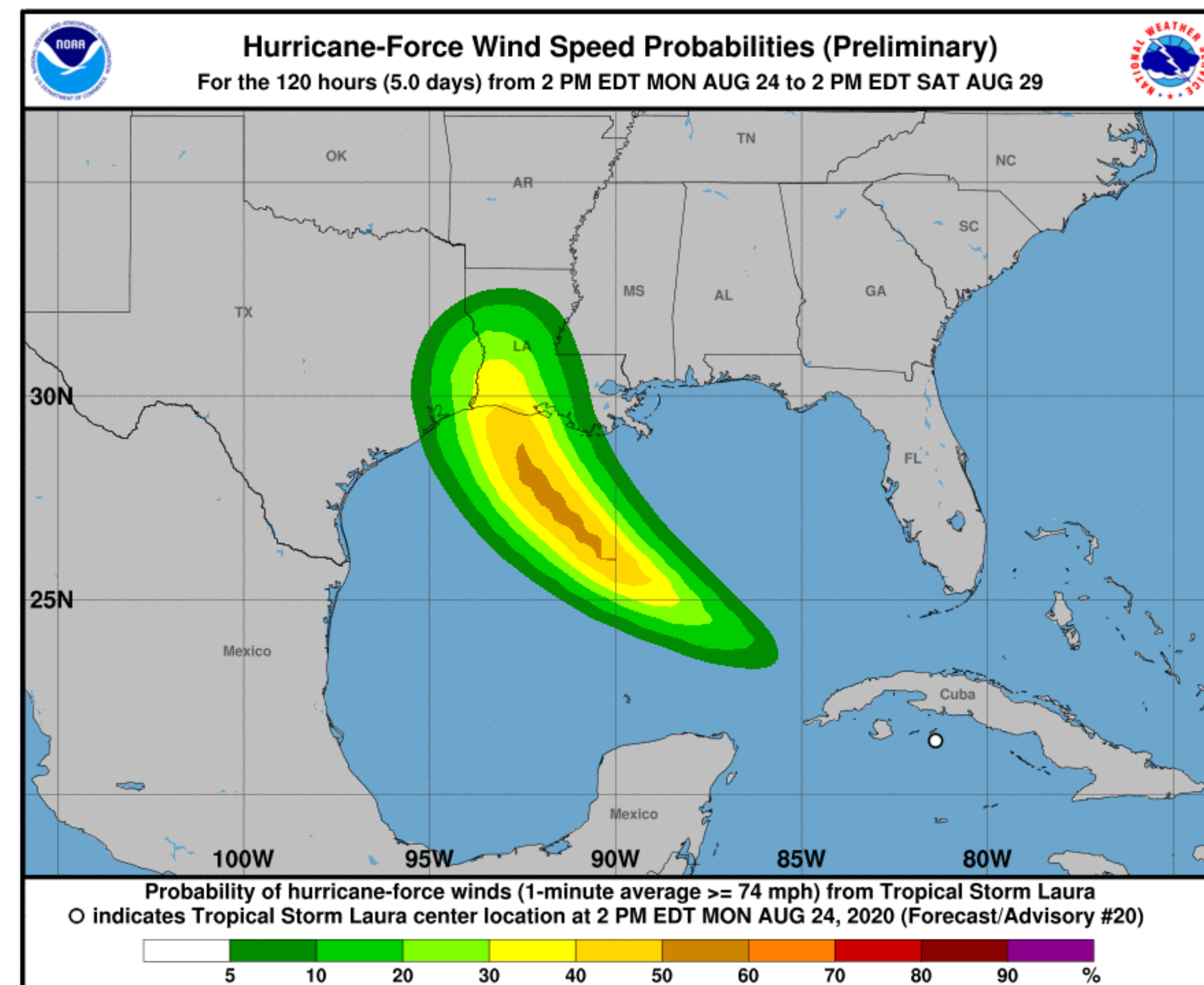
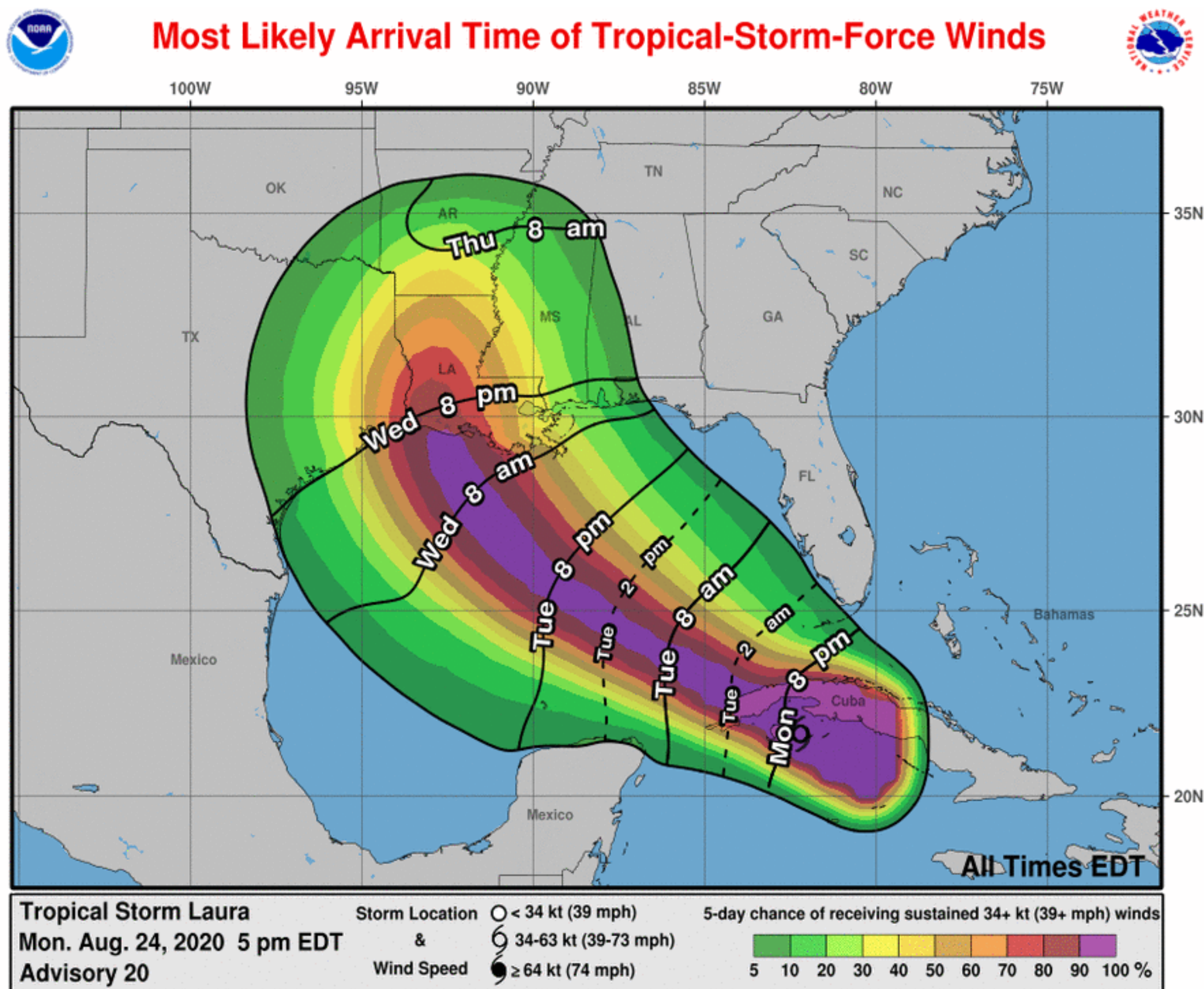
NOTE: Do not focus on the exact track. Impacts can occur well outside the area enclosed by the cone.

Tropical Storm/Hurricane Probabilities

Tropical Storm Laura



Lake Charles
WEATHER FORECAST OFFICE



Tropical Storm force winds could start Wednesday morning near the south central Louisiana coast, and Wednesday afternoon and evening for southeast Texas and southwest Louisiana.

Storm Surge-southeast Texas

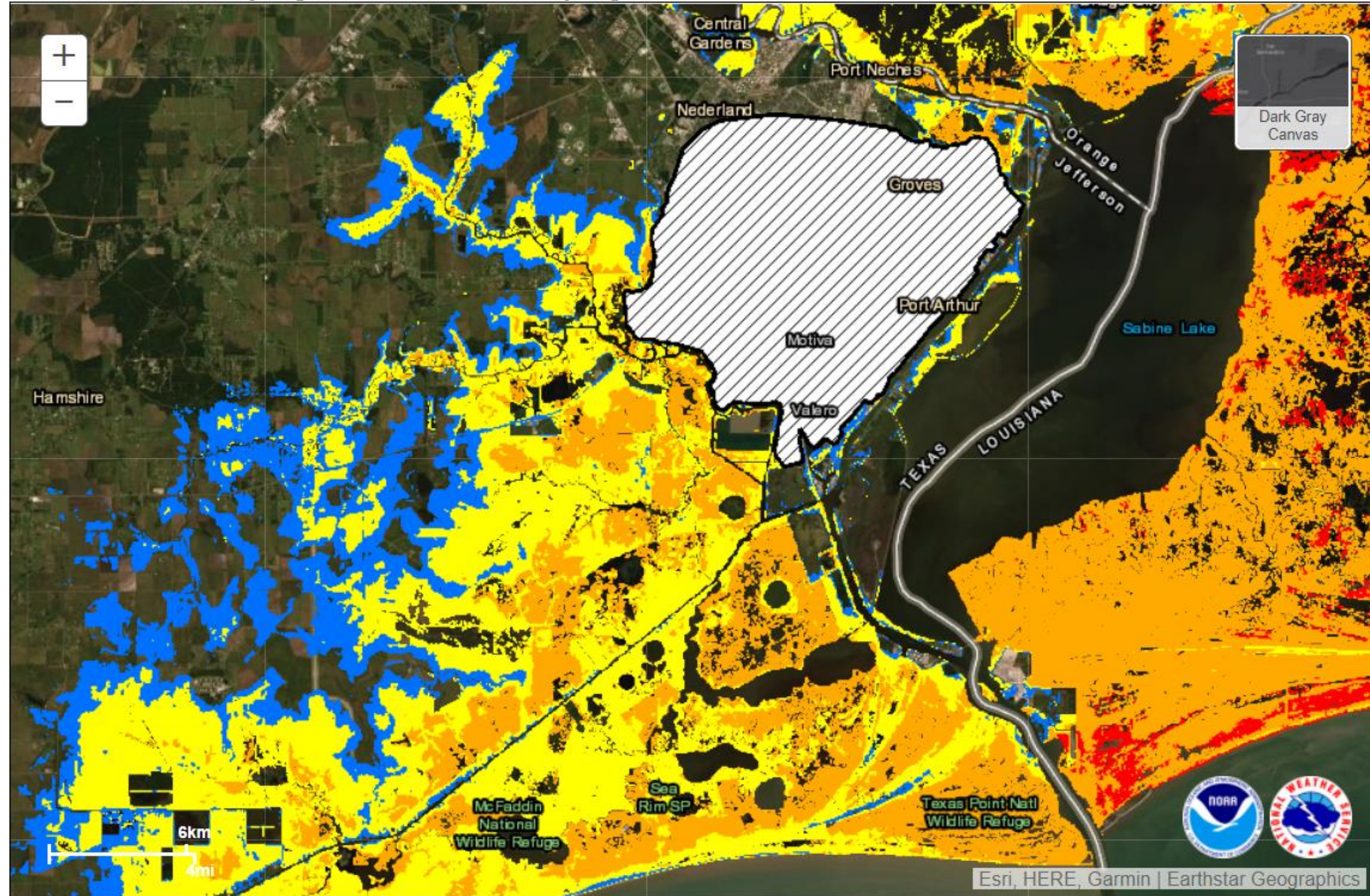
Tropical Storm Laura



Lake Charles

WEATHER FORECAST OFFICE

NHC Potential Storm Surge Flooding Map
Tropical Storm LAURA (2020) Advisory 19
From 10 AM CDT Monday August 24 to 01 PM CDT Friday August 28



Potential Storm Surge Flooding*

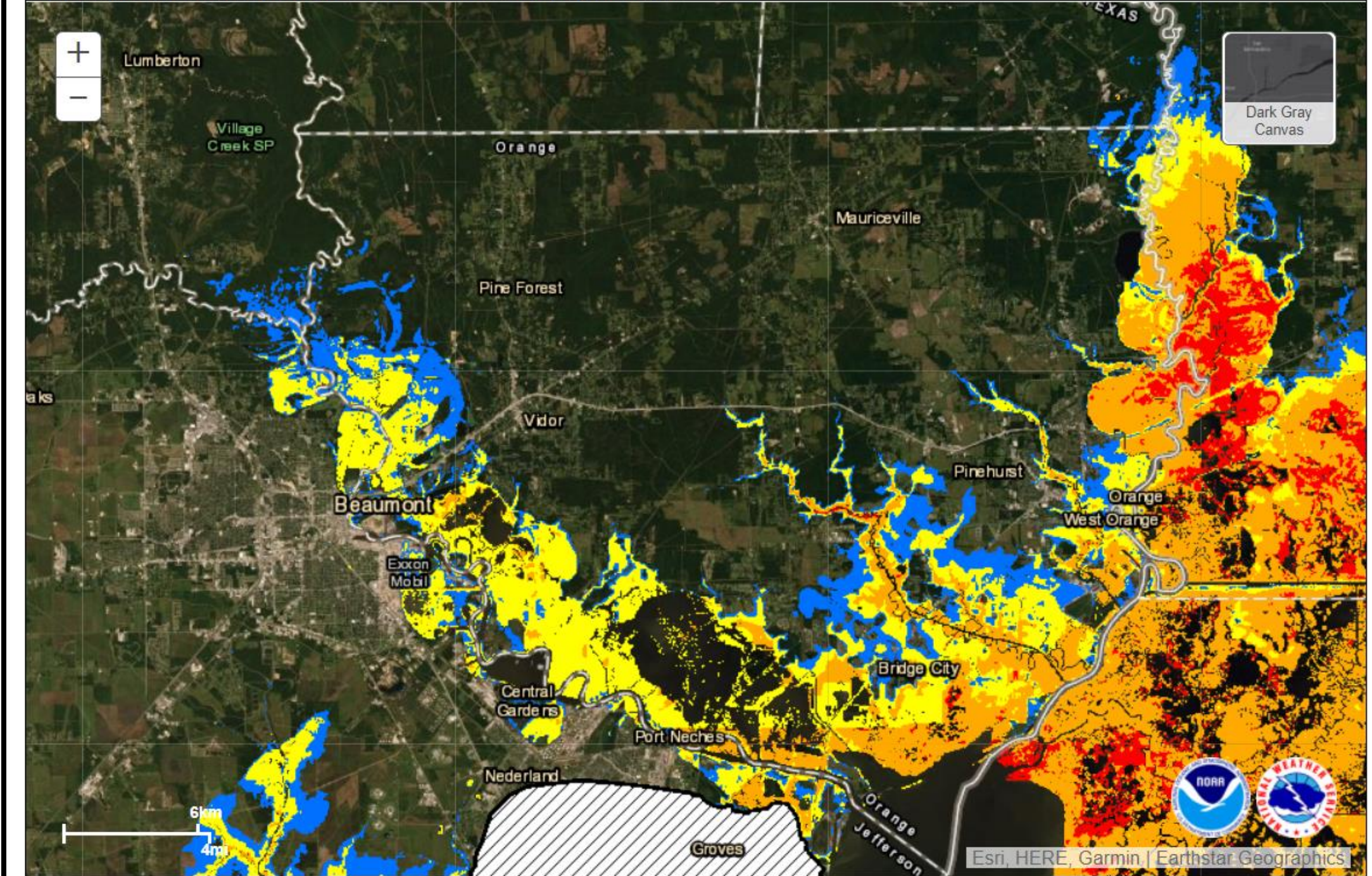
- Intertidal Zone/Estuarine Wetland
- Greater than 1 foot above ground
- Greater than 3 feet above ground
- Greater than 6 feet above ground
- Greater than 9 feet above ground
- Leveed area
- Consult local officials for flood risk

*Displayed flooding values indicate the water height that has a

Key Potential Problem Areas:

- Sabine Pass
- Port Arthur levee
- Hillebrandt Bayou
- Taylor Bayou

NHC Potential Storm Surge Flooding Map
Tropical Storm LAURA (2020) Advisory 19
From 10 AM CDT Monday August 24 to 01 PM CDT Friday August 28



Potential Storm Surge Flooding*

- Intertidal Zone/Estuarine Wetland
- Greater than 1 foot above ground
- Greater than 3 feet above ground
- Greater than 6 feet above ground
- Greater than 9 feet above ground
- Leveed area
- Consult local officials for flood risk

*Displayed flooding values indicate the water height that has a

Key Potential Problem Areas:

- Rose City, Bridge City
- Orange
- Cow Bayou, Adams Bayou
- Sabine & Neches River

Storm Surge-southwest Louisiana

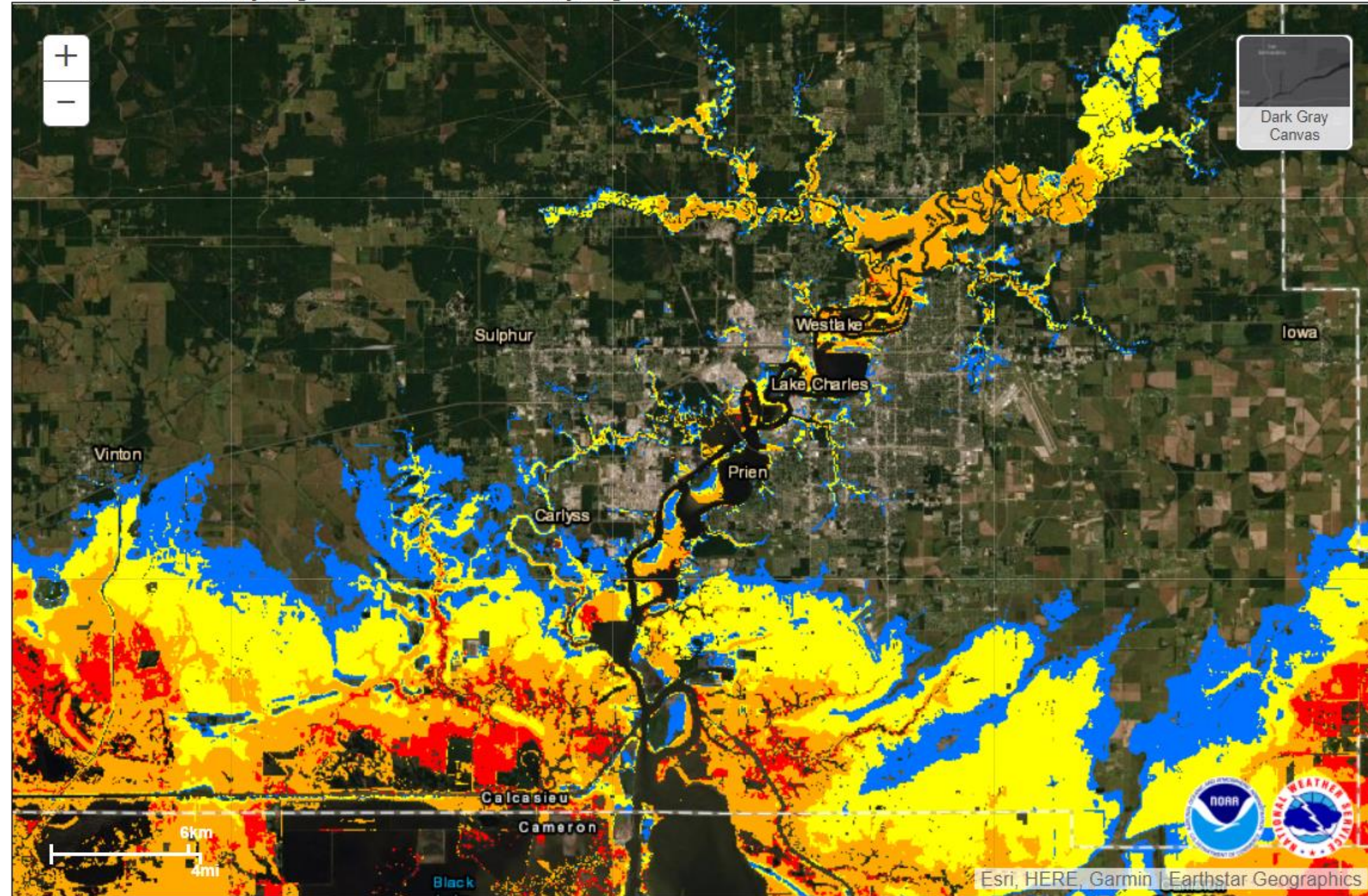
Tropical Storm Laura



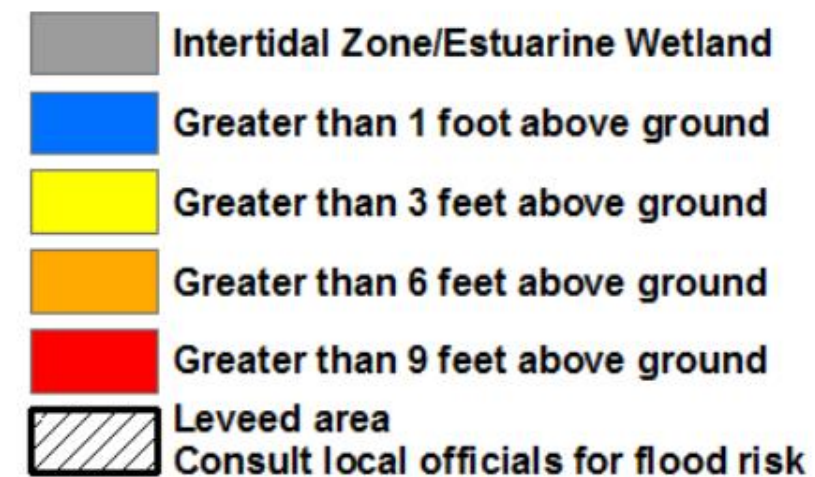
Lake Charles

WEATHER FORECAST OFFICE

NHC Potential Storm Surge Flooding Map
Tropical Storm LAURA (2020) Advisory 19
From 10 AM CDT Monday August 24 to 01 PM CDT Friday August 28



Potential Storm Surge Flooding*

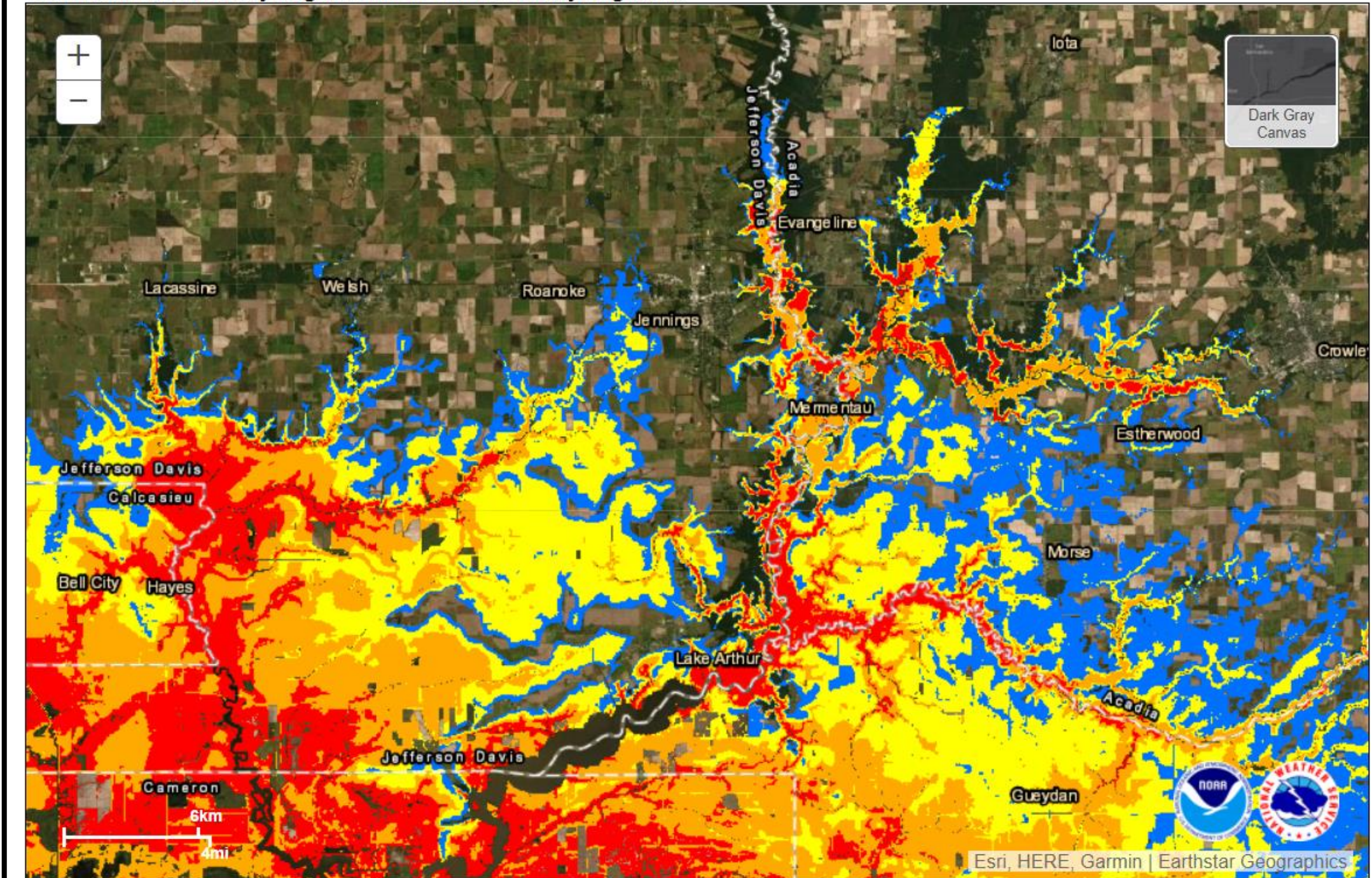


*Displayed flooding values indicate the water height that has abo

Key Potential Problem Areas:

- Calcasieu River, west fork
- Contraband Bayou
- Houston River
- Deatonville
- Choupique Bayou

NHC Potential Storm Surge Flooding Map
Tropical Storm LAURA (2020) Advisory 19
From 10 AM CDT Monday August 24 to 01 PM CDT Friday August 28



Potential Storm Surge Flooding*



*Displayed flooding values indicate the water height that has a

Key Potential Problem Areas:

- Lake Arthur
- Mermontau River
- Bell City, Hayes
- Bayou Plaquemine
- Bayou des Cannes

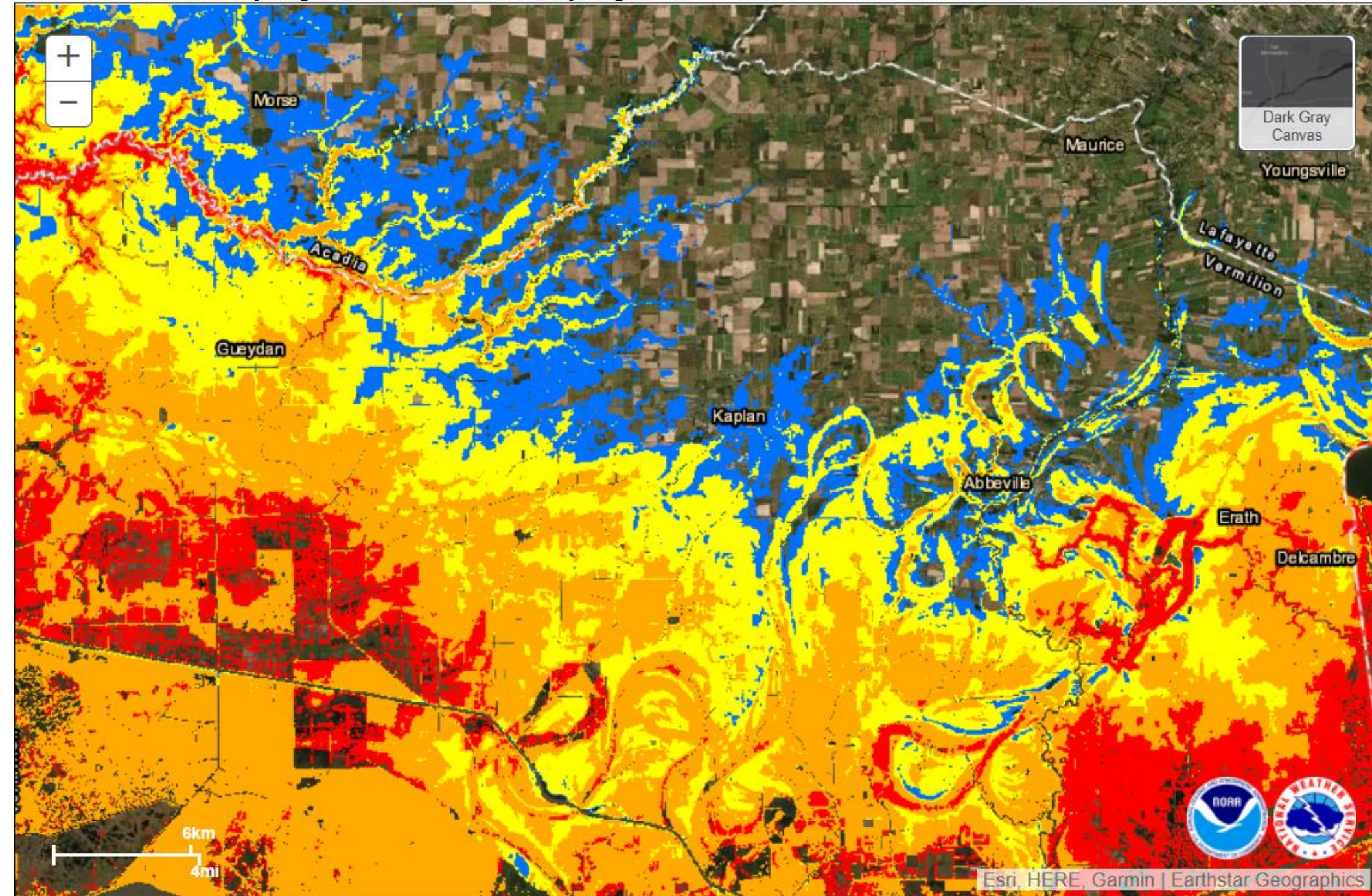
Storm Surge-south central Louisiana

Tropical Storm Laura

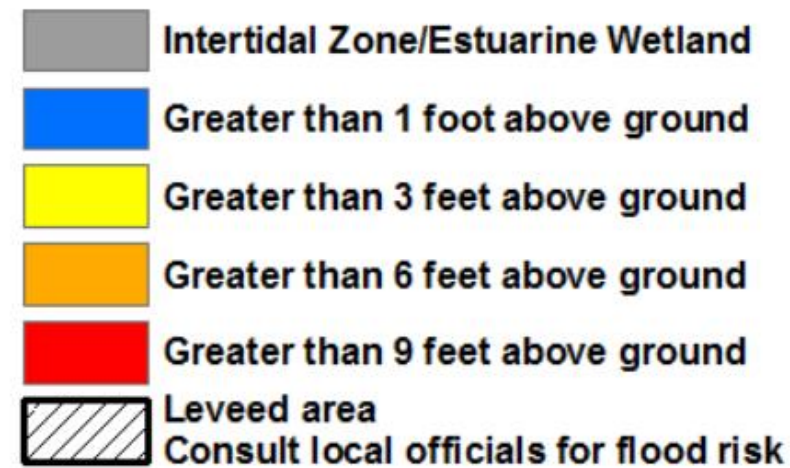


Lake Charles WEATHER FORECAST OFFICE

NHC Potential Storm Surge Flooding Map
Tropical Storm LAURA (2020) Advisory 19
From 10 AM CDT Monday August 24 to 01 PM CDT Friday August 28



Potential Storm Surge Flooding*

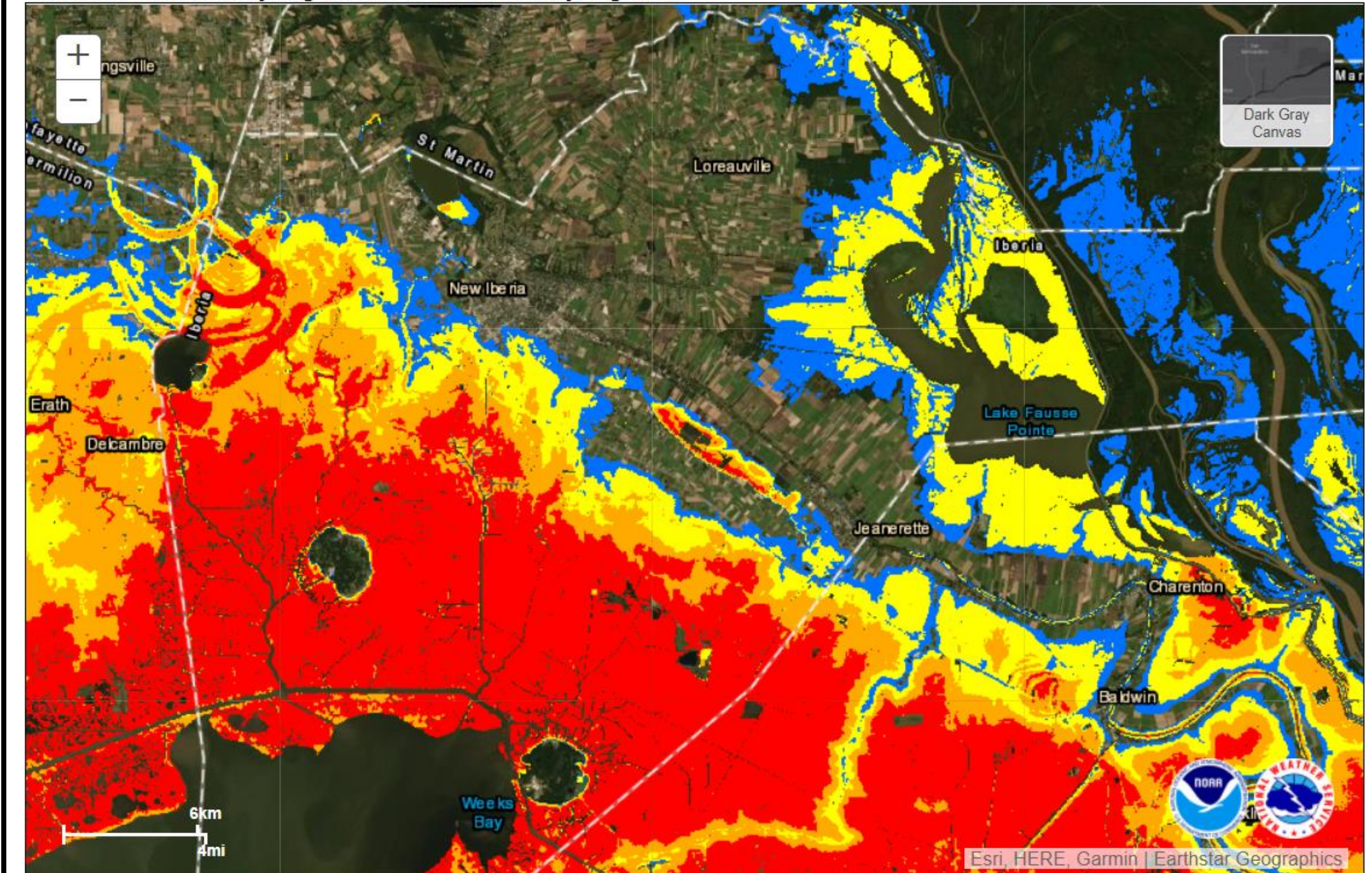


*Displayed flooding values indicate the water height that has

Key Potential Problem Areas:

- Gueydan
- Intracoastal City
- Pecan Island
- Esther

NHC Potential Storm Surge Flooding Map
Tropical Storm LAURA (2020) Advisory 19
From 10 AM CDT Monday August 24 to 01 PM CDT Friday August 28



Potential Storm Surge Flooding*



*Displayed flooding values indicate the water height that has a

Key Potential Problem Areas:

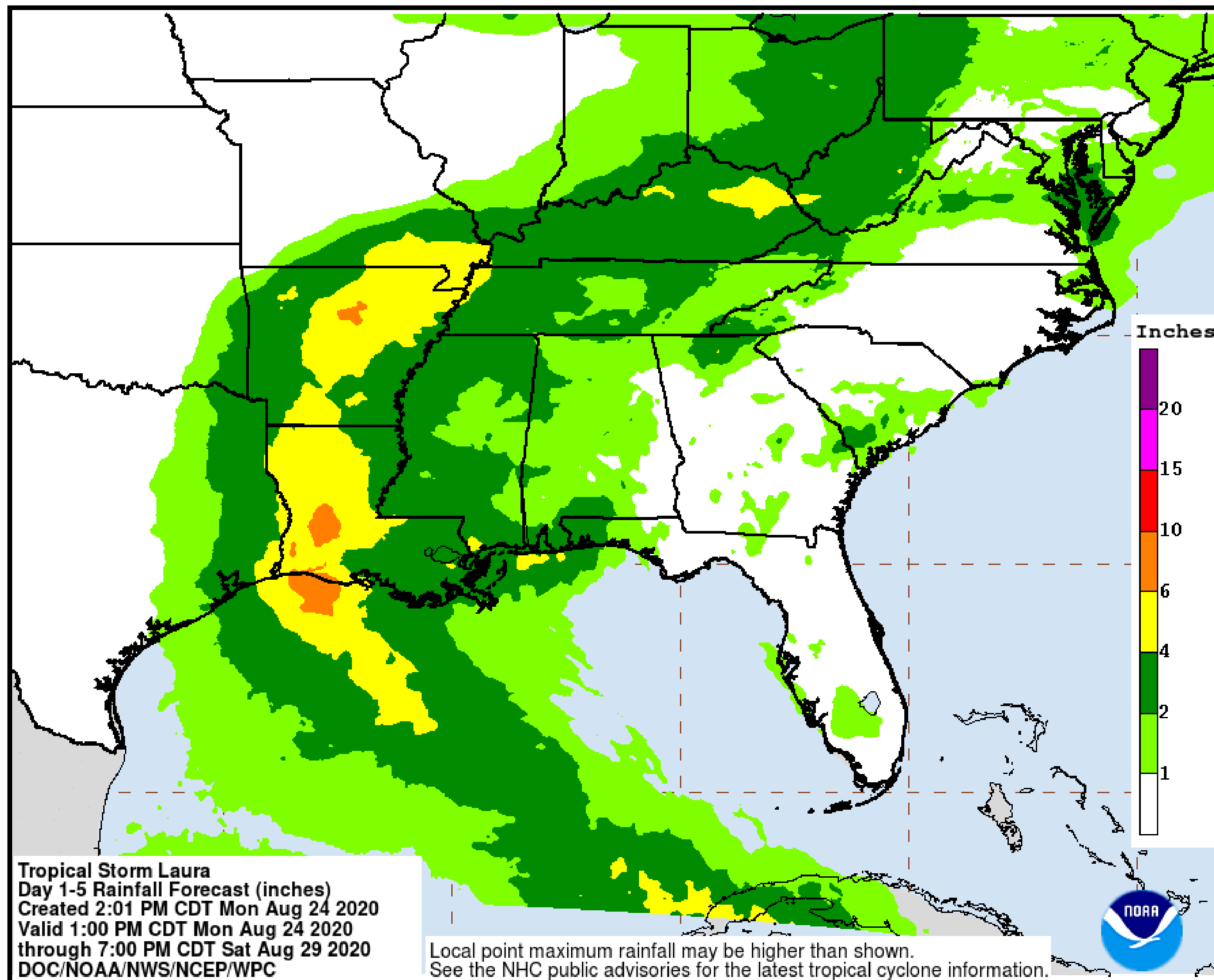
- Delcambre, Avery Island
- Cypremort Point
- Burns Point
- Franklin

Rainfall Forecast

Tropical Storm Laura



Lake Charles
WEATHER FORECAST OFFICE



Five to ten inches of rain is possible near and to the right of where Laura makes landfall.

Locally higher amounts of 15 inches are possible.

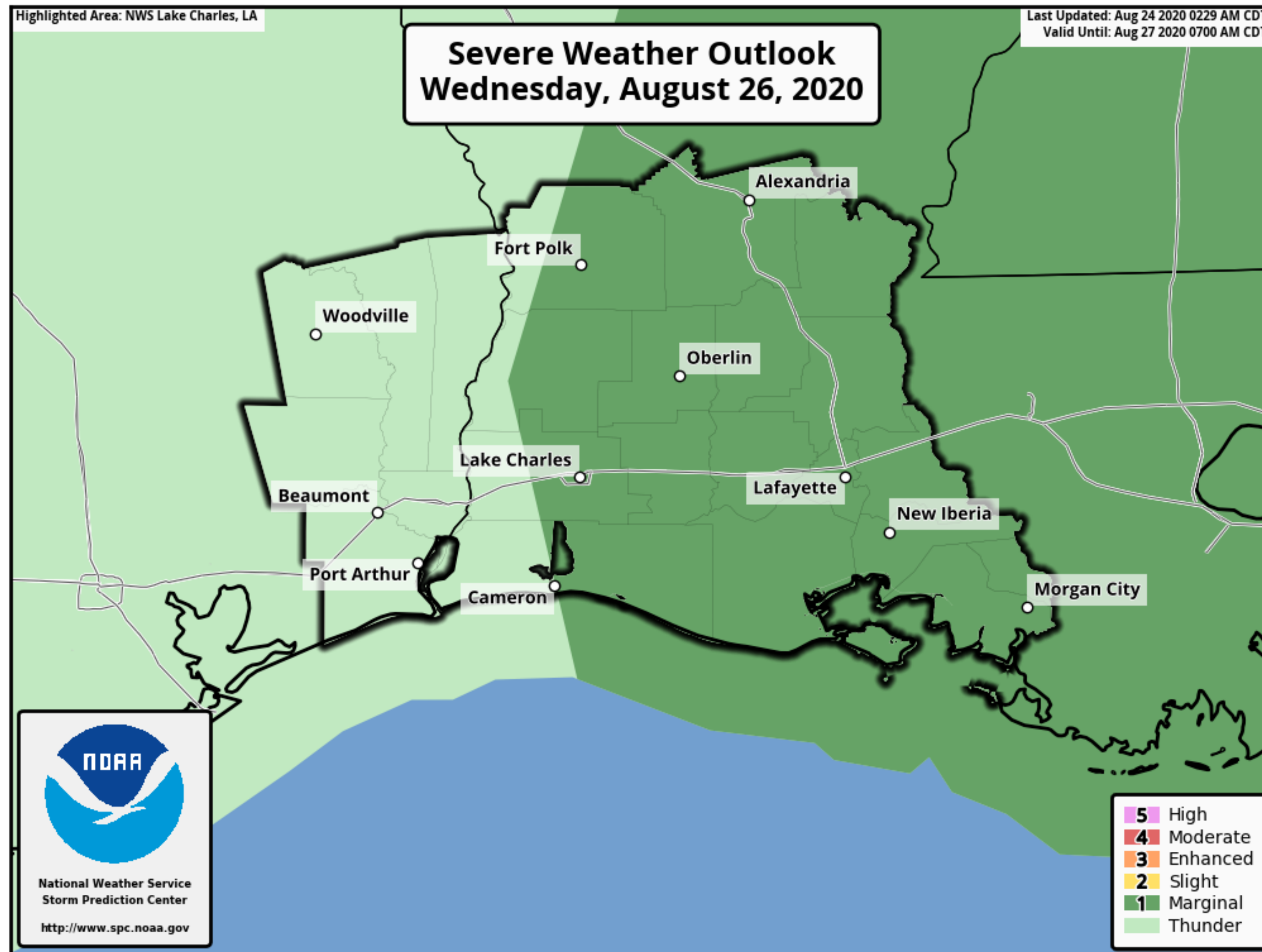
The timing of this heavy rain is starting Wednesday and continuing into Thursday.

Tornado Forecast

Tropical Storm Laura



Lake Charles
WEATHER FORECAST OFFICE



As rain bands start to approach the coast, isolated tornadoes will be possible, starting on Wednesday, and extending into Thursday.

If the track shifts into Texas then the tornado threat will extend there as well.

Potential Weather Impacts

Tropical Storm Laura



Lake Charles
WEATHER FORECAST OFFICE

- **Winds:** Hurricane force winds will be possible across the region starting late Wednesday and continuing Thursday.
- **Storm Surge:** At the coast, water could be over 10 feet above ground level. Depending on where Laura makes landfall, storm surge can back up rivers and bayous and flood over 30 miles inland.
- **Rainfall:** Depending on where the rain bands form, 5 to 10 inches with locally 15 inches will be possible starting Wednesday into Thursday.
- **Tornadoes:** Tornadoes will be possible in the eyewall as the hurricane approaches the coast, as well as outer rain bands starting Wednesday into Thursday.

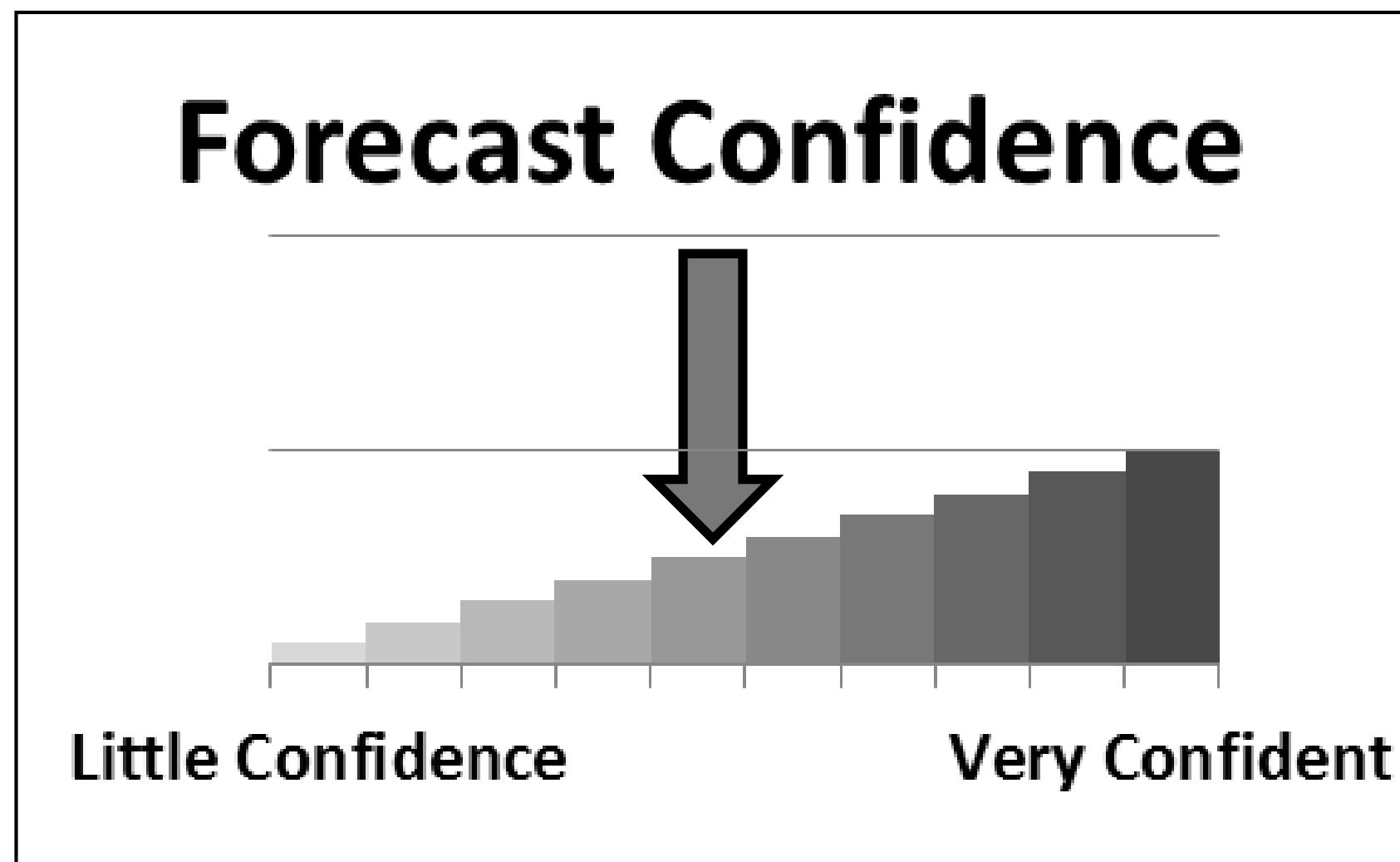
Key Take-Aways

Tropical Storm Laura



Lake Charles WEATHER FORECAST OFFICE

- Marco is not expected to cause any weather problems in our region tonight or tomorrow.
- Laura is expected to make landfall between southeast Texas and south central Louisiana as a category two hurricane late Wednesday or early Thursday.
- The average error for hurricane forecasts is 70 to 100 miles off for two to three days in advance of landfall, so do not focus on the individual forecast points, but use the error cone instead!
- Everyone should be preparing for a category three hurricane due to the average forecast errors when it comes to wind speeds (+/- 15-20 mph for 2-3 days in advance) .



We have medium confidence in the track and intensity of Laura.