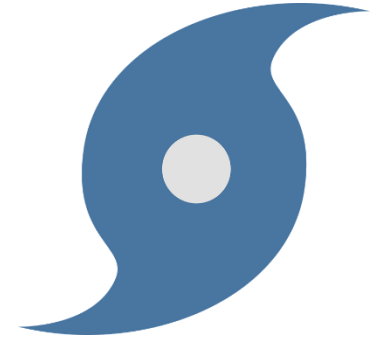




FOR IMMEDIATE RELEASE
MONDAY, AUGUST 24, 2020

HURRICANE LAURA REPORT



ALLISON NATHAN GETZ
PUBLIC INFORMATION OFFICER
CELL: (409) 351-3882

August 25th Daily Briefing

- Hurricane Laura has the potential to rapidly intensify over the next 24 hours. The landfall projection shows southeast Texas and southwest Louisiana late Wednesday night/early Thursday morning as a category three hurricane. The storm surge forecast is 9 to 13 feet above ground level for coastal areas. A storm surge warning is now in effect. Catastrophic and life-threatening flooding is expected. Hurricane warnings are now in effect for all of southeast Texas and most of southwest Louisiana. Expect widespread power outages, trees downed, homes and businesses damaged. Rainfall of 5 to 10 inches with locally 15 inches will cause flooded roads. This rainfall will have a hard time draining due to the storm surge. Water rescues will likely be required if people are on the road and stay in the area.
- **All Jefferson County Citizens are urged to evacuate!** Judge Jeff Branick has called for a mandatory evacuation for all of Jefferson County
- Highway 365 Levee gate will close at 12:00pm on Aug 26, 2020
- For those that need assistance with evacuation – call 211 regardless of where you are located
- Employees exempt from these evacuations are those of oil terminals, pipelines and oil supply facilities, petrochemical and refining complexes; employees of hospitals, trauma centers, nursing homes, convalescent facilities or other healthcare providers, utility and insurance adjusters, disaster clean personnel and governmental employees deemed essential by their employer
- Slides below detail the latest weather update from Roger Erickson

Key Points

Hurricane Laura



Lake Charles

WEATHER FORECAST OFFICE

- Hurricane Laura has the potential to rapidly intensify over the next 24 hours. The landfall projection shows southeast Texas and southwest Louisiana late Wednesday night/early Thursday morning as a category three hurricane.
- The storm surge forecast is 9 to 13 feet above ground level for coastal areas. A storm surge warning is now in effect. Catastrophic and life threatening flooding is expected.
- Hurricane warnings are now in effect for all of southeast Texas and most of southwest Louisiana. Expect widespread power outages, trees downed, homes and businesses damaged.
- Rainfall of 5 to 10 inches with locally 15 inches will cause flooded roads. This rainfall will have a hard time draining due to the storm surge. Water rescues will likely be required if people are on the road and stay in the area.

Watch/Warnings in effect

Hurricane Laura



Lake Charles
WEATHER FORECAST OFFICE

- **Hurricane Warning**

- Hardin, Jasper, Jefferson, Newton, Orange, Tyler
- Acadia, Allen, Beauregard, Calcasieu, Cameron, Evangeline, Jeff Davis, Rapides, Vermilion, Vernon

- **Tropical Storm Warning**

- Avoyelles, Iberia, Lafayette, St. Landry, St. Martin, St. Mary

- **Storm Surge Warning**

- Hardin, Jefferson, Orange
- Acadia, Calcasieu, Cameron, Iberia, Jeff Davis, St. Mary, Vermilion

- **Flash Flood Watch**

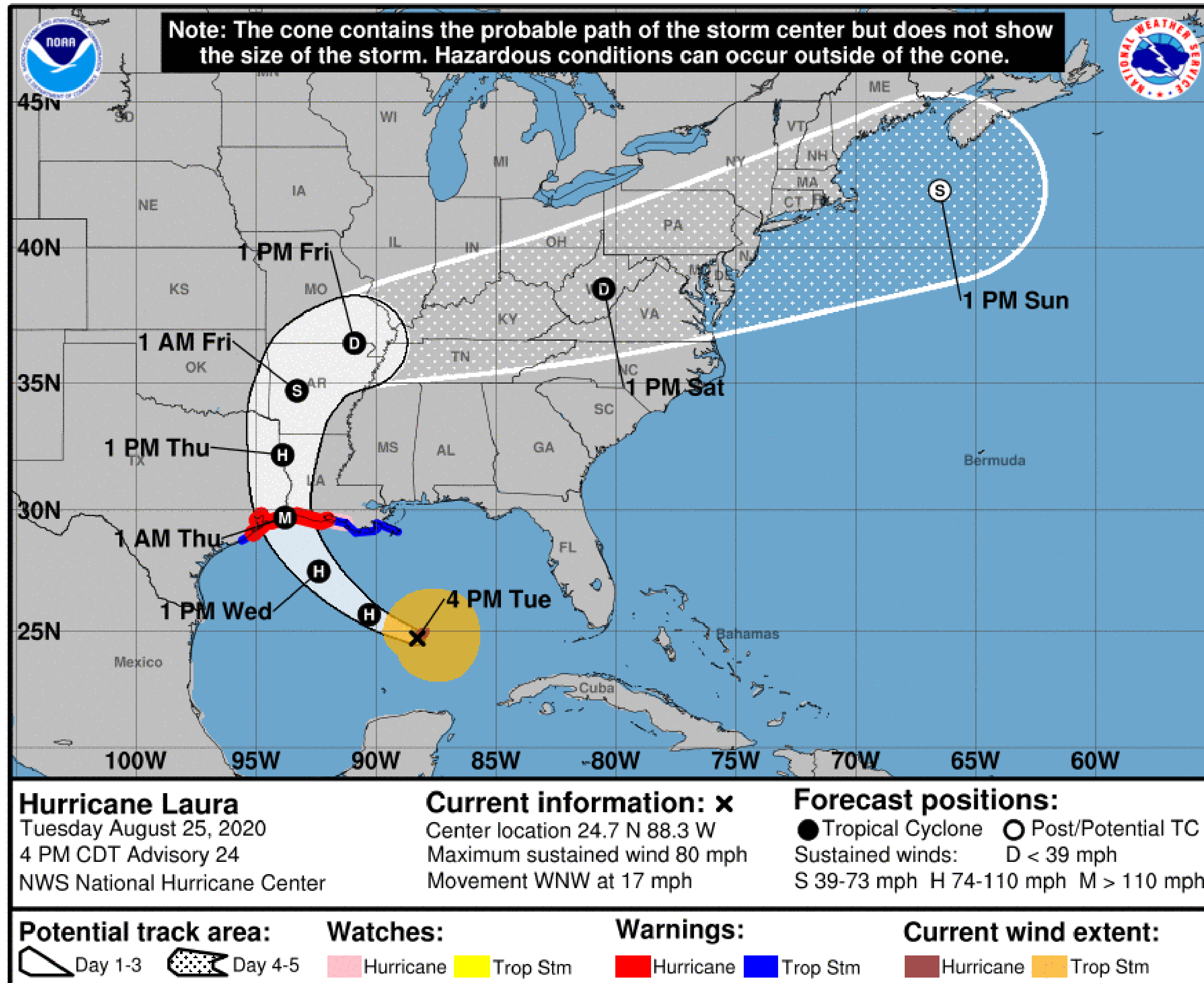
- Hardin, Jasper, Jefferson, Newton, Orange, Tyler
- Acadia, Allen, Beauregard, Calcasieu, Cameron, Evangeline, Jeff Davis, Rapides, Vermilion, Vernon

Situation Overview

Hurricane Laura



Lake Charles
WEATHER FORECAST OFFICE



- Laura is in a favorable region for strengthening right now.
- Major weather impacts are expected in our region late Wednesday into Thursday.

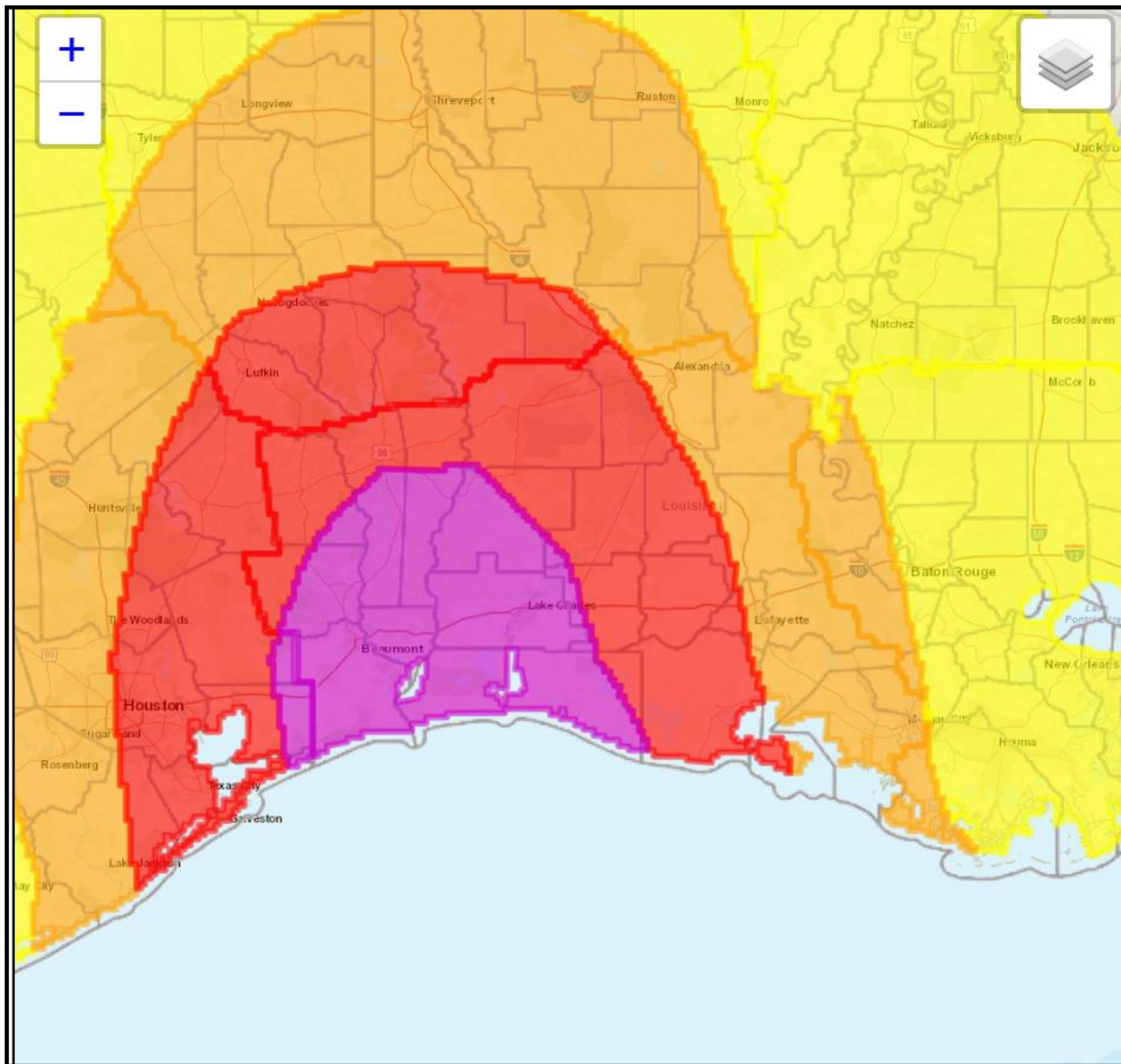
NOTE: Do not focus on the exact track. Impacts can occur well outside the area enclosed by the cone.

Wind Threat / Potential Impact

Hurricane Laura



Lake Charles
WEATHER FORECAST OFFICE



Wind Threat

Potential for wind greater than 110 mph	Potential for wind 74 to 110 mph	Potential for wind 58 to 73 mph	Potential for wind 39 to 57 mph	Wind less than 39 mph
---	----------------------------------	---------------------------------	---------------------------------	-----------------------

There is a potential for:

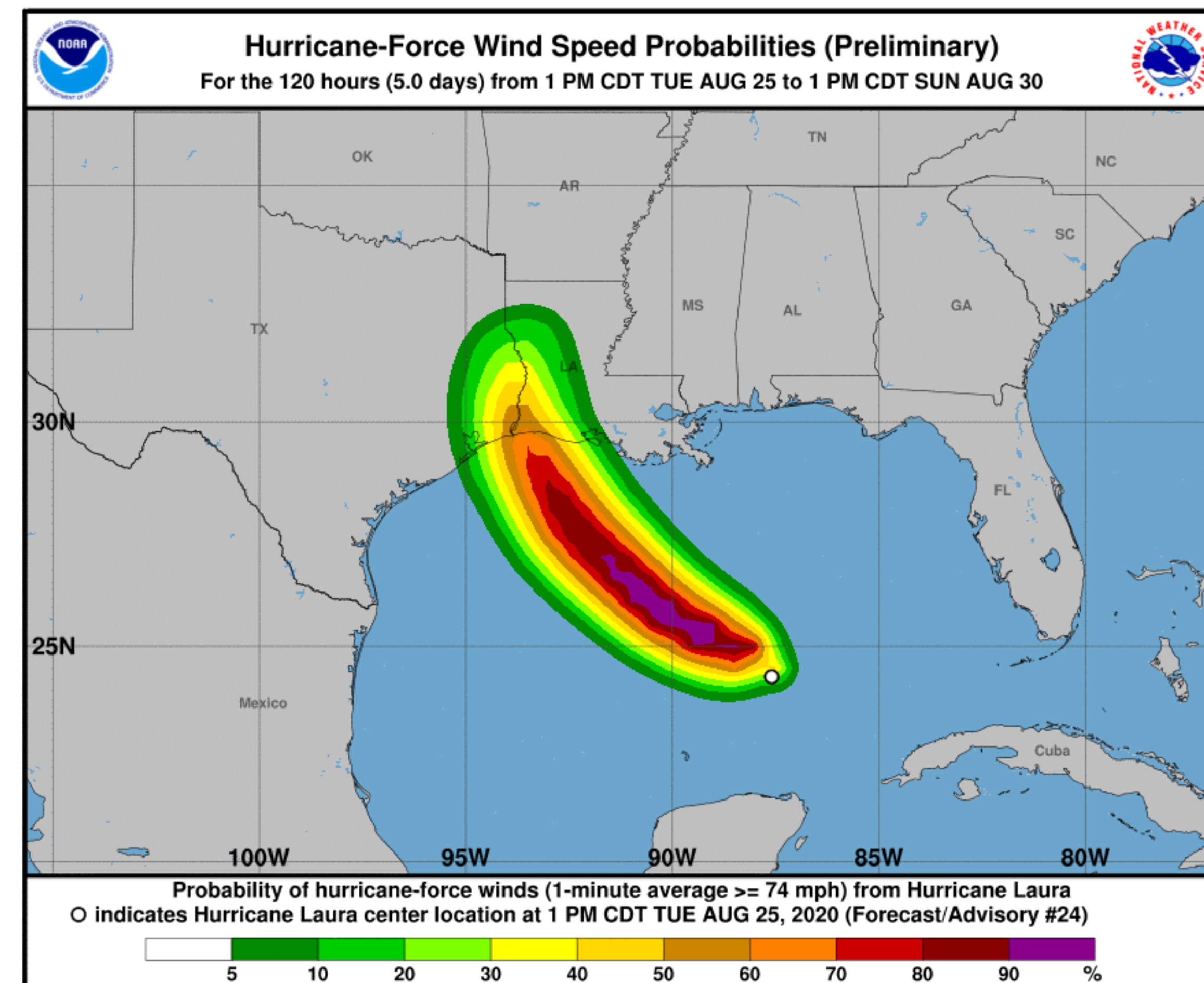
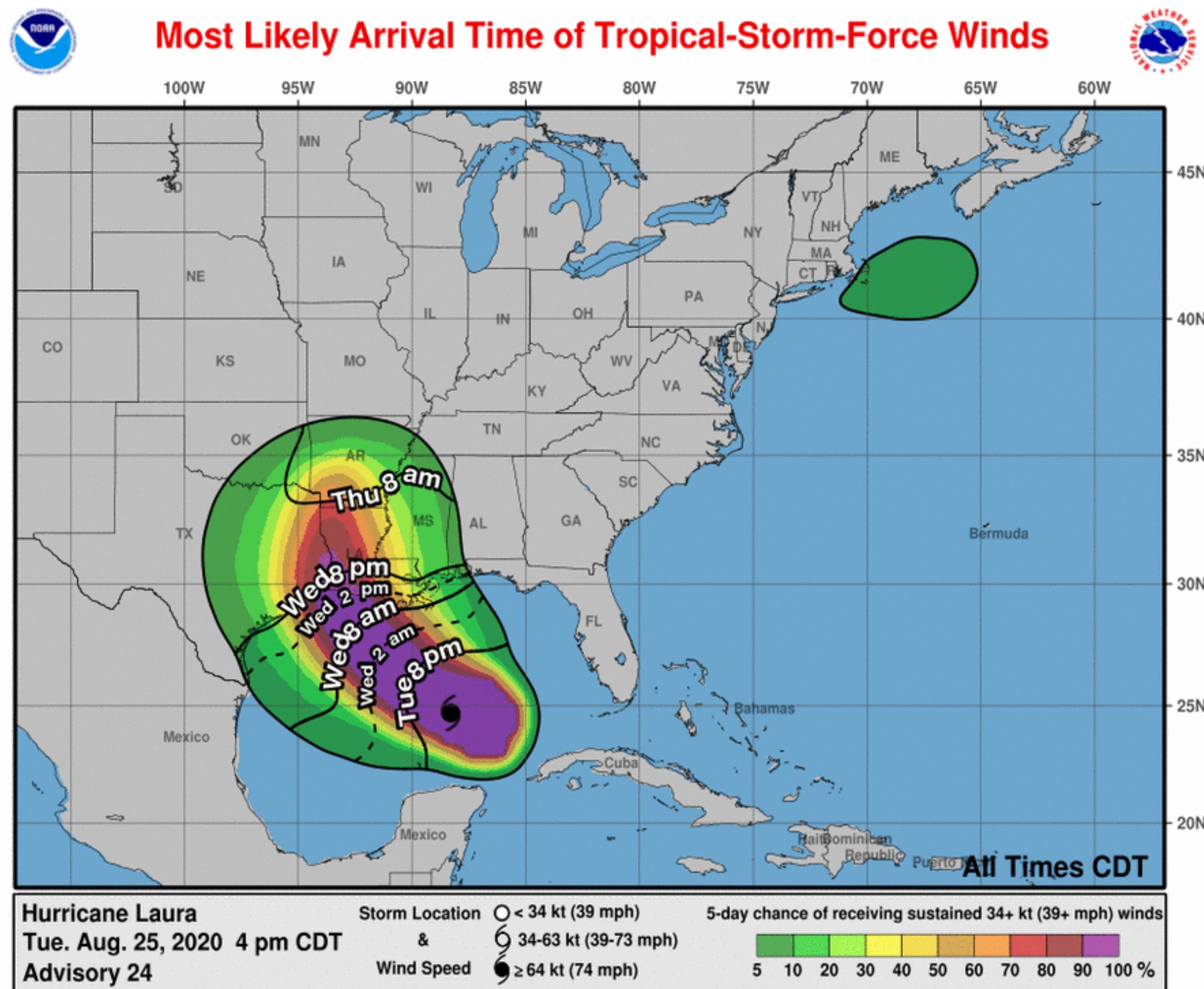
- Hurricane force winds for most of our region
- Widespread power outages
- Numerous trees blown down
- Damage to homes and businesses

Tropical Storm/Hurricane Probabilities

Hurricane Laura



Lake Charles
WEATHER FORECAST OFFICE



Tropical Storm force winds will start Wednesday afternoon near the coast, and extend inland during the night. Tropical Storm force winds will last 12 to 20 hours.

Wind Timing

Hurricane Laura



Lake Charles
WEATHER FORECAST OFFICE

Expected Duration of Wind Speeds

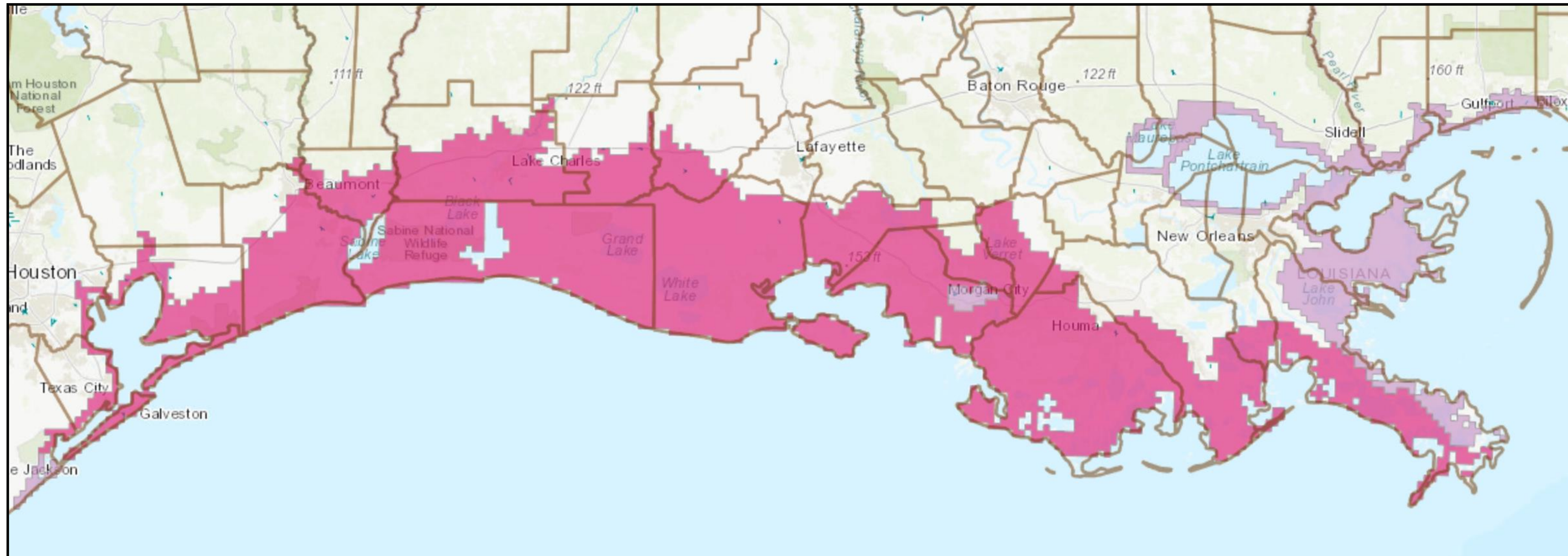
Location	Tropical Storm Force Winds	Hurricane Force Winds
Southeast Texas (Hardin, Jefferson, Orange)	Start Wednesday afternoon End Thursday afternoon 16-20 hours	Start early Thursday morning End Thursday midday 4-8 hours
East Texas (Tyler, Jasper, Newton)	Start early Thursday morning End Thursday evening 12-16 hours	Start Thursday morning End Thursday afternoon 2-4 hours
Southwest Louisiana (Allen, Beauregard, Calcasieu, Cameron, Jeff Davis)	Start Wednesday afternoon End Thursday afternoon 16-20 hours	Start early Thursday morning End Thursday midday 4-8 hours
South Central Louisiana (Acadia, Evangeline, Iberia, Lafayette, St. Landry, St. Martin, St. Mary, Vermilion)	Start Wednesday afternoon End Thursday afternoon 16-20 hours	Intermittent hurricane force gusts Thursday morning
Central Louisiana (Vernon, Rapides, Avoyelles)	Start early Thursday morning End Thursday evening 6-12 hours	Start Thursday morning End Thursday afternoon 2-4 hours

Storm Surge Watch/Warning

Hurricane Laura



Lake Charles
WEATHER FORECAST OFFICE



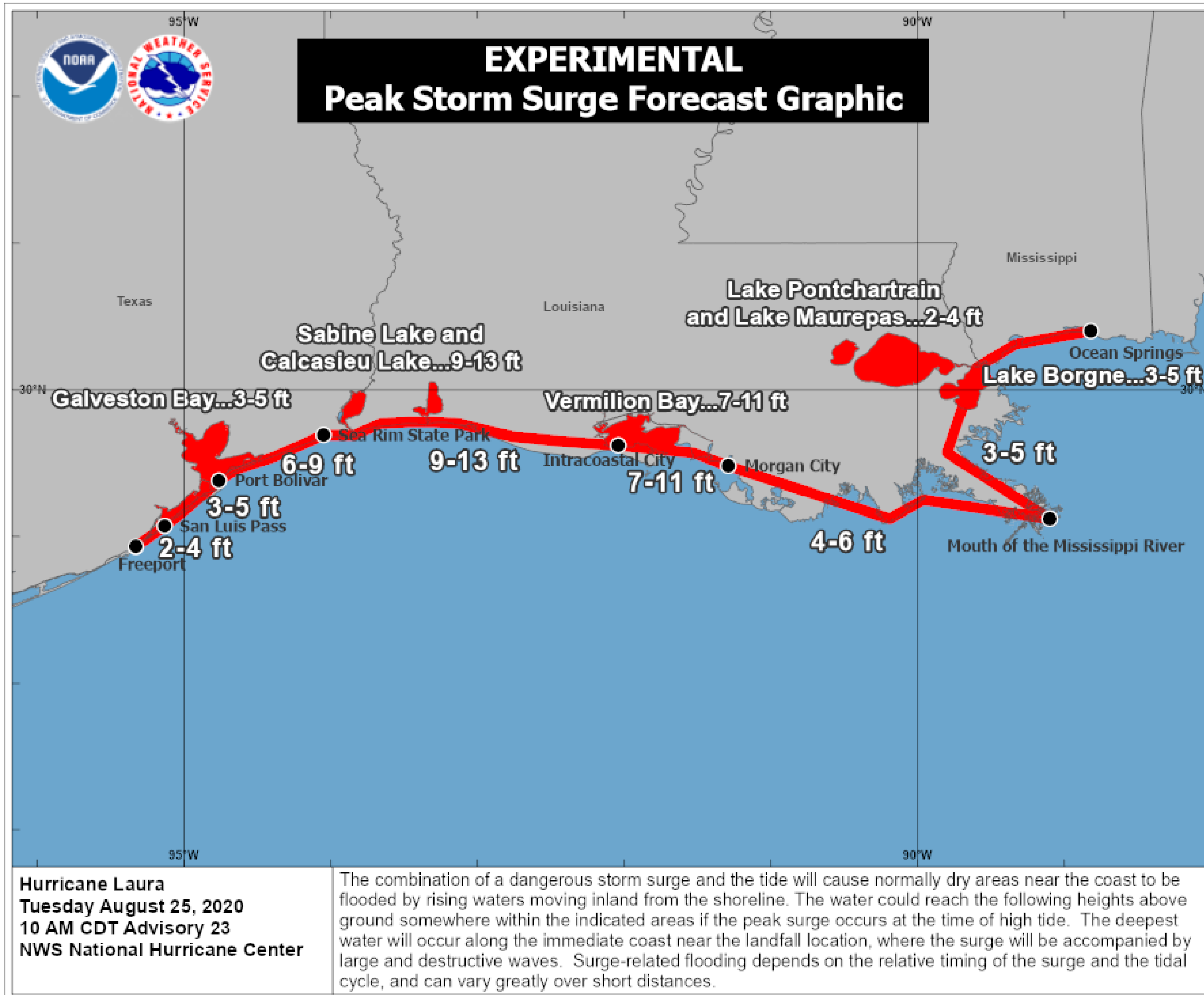
Storm Surge warnings are issued when we believe the water could be 3 feet deep or more for your location.

Peak Storm Surge at the coast

Hurricane Laura



Lake Charles
WEATHER FORECAST OFFICE



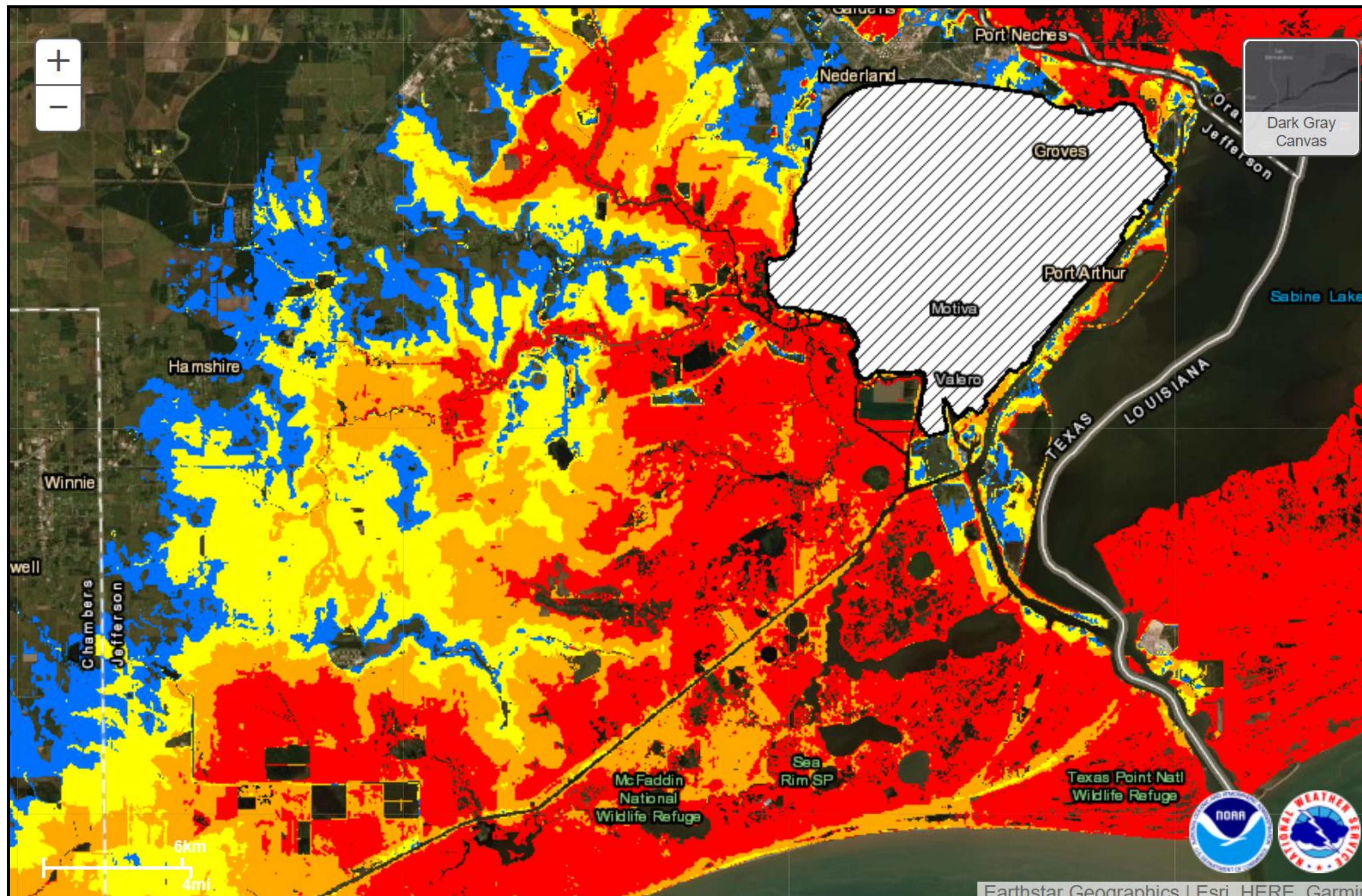
- Water levels near the coast are forecast to be 9 to 13 feet above ground level from Sea Rim State Park, TX to Intracoastal City.
- Water levels from Intracoastal City to Morgan City are forecast to be 7 to 11 feet above ground level.

Storm Surge-southeast Texas

Hurricane Laura



Lake Charles
WEATHER FORECAST OFFICE



Potential Storm Surge Flooding*

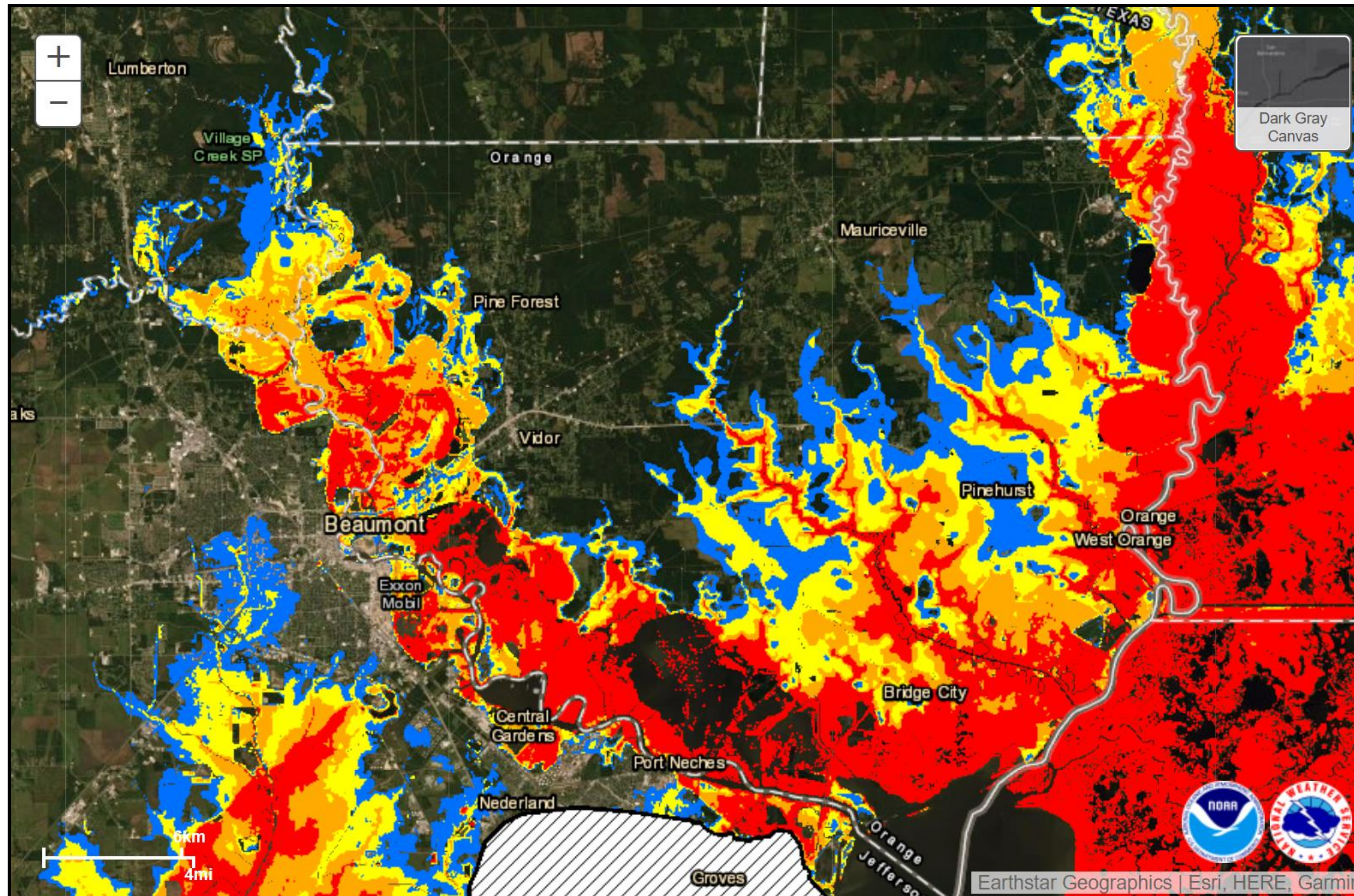
- Intertidal Zone/Estuarine Wetland
- Greater than 1 foot above ground
- Greater than 3 feet above ground
- Greater than 6 feet above ground
- Greater than 9 feet above ground
- Leveed area
Consult local officials for flood risk

Storm Surge-southeast Texas

Hurricane Laura



Lake Charles
WEATHER FORECAST OFFICE



Potential Storm Surge Flooding*

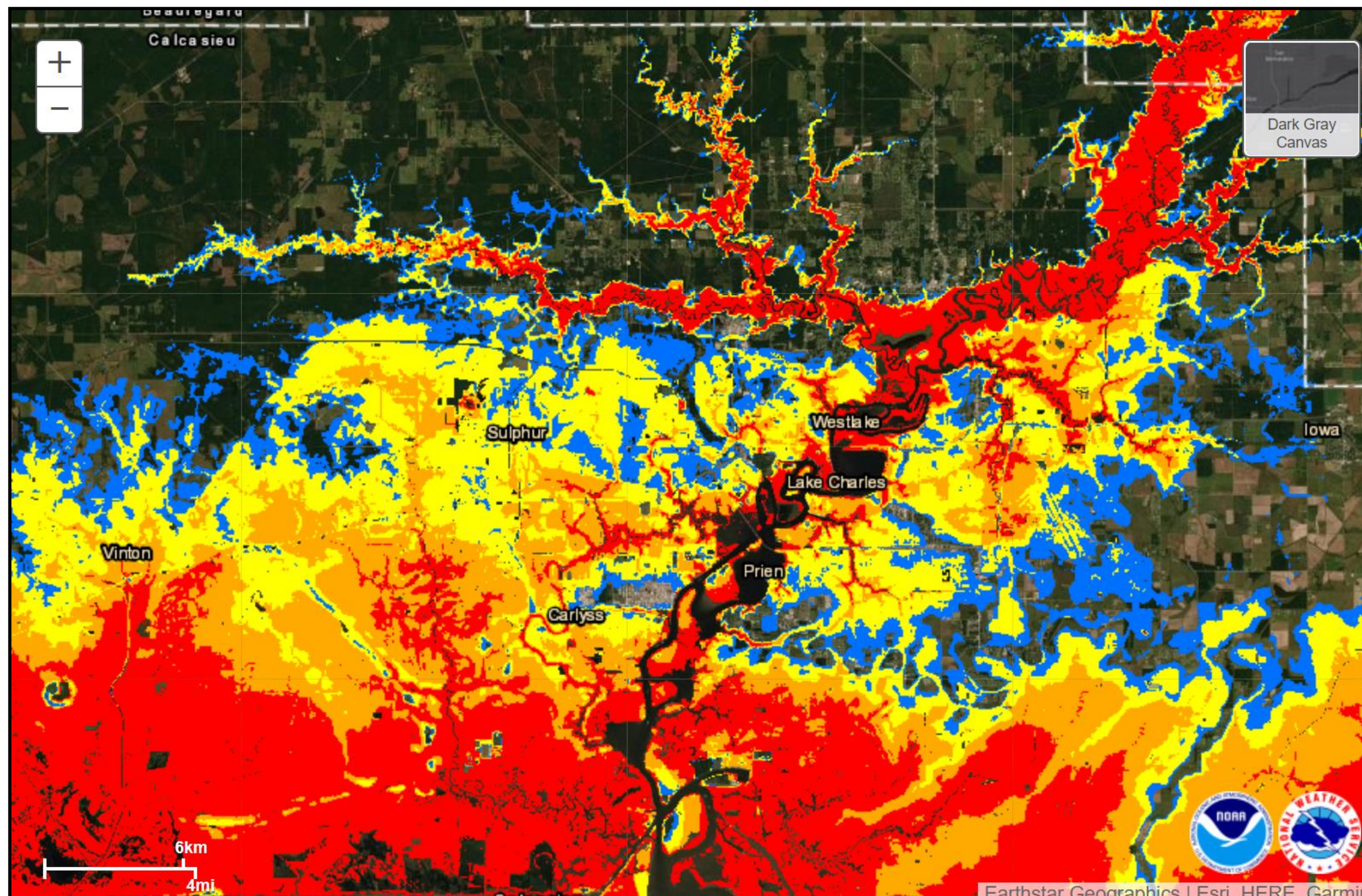
- Intertidal Zone/Estuarine Wetland
- Greater than 1 foot above ground
- Greater than 3 feet above ground
- Greater than 6 feet above ground
- Greater than 9 feet above ground
- Leveed area
Consult local officials for flood risk

Storm Surge-southwest Louisiana

Hurricane Laura



Lake Charles
WEATHER FORECAST OFFICE



Potential Storm Surge Flooding*

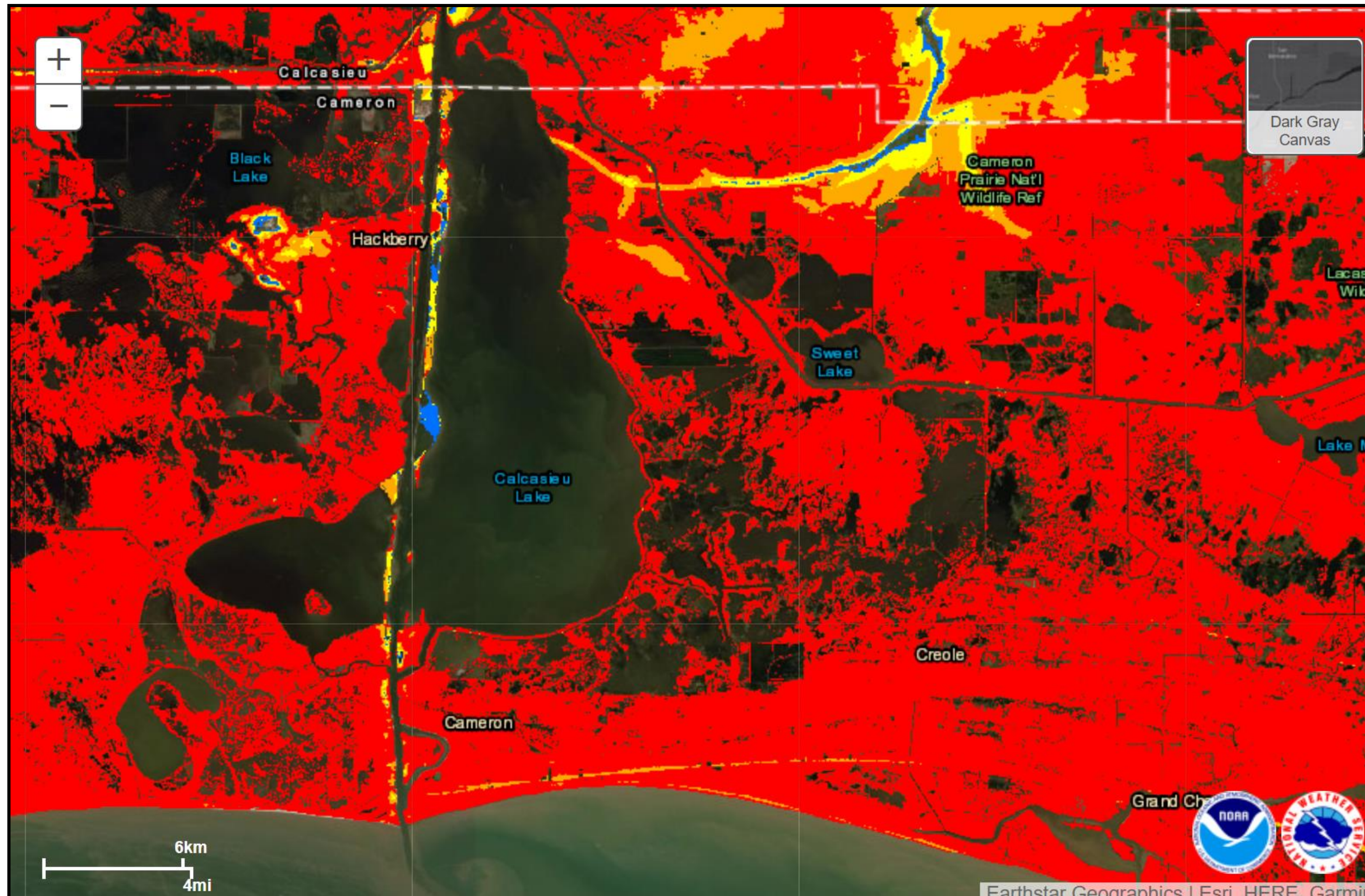
- Intertidal Zone/Estuarine Wetland
- Greater than 1 foot above ground
- Greater than 3 feet above ground
- Greater than 6 feet above ground
- Greater than 9 feet above ground
- Leveed area
Consult local officials for flood risk

Storm Surge-southwest Louisiana

Hurricane Laura



Lake Charles
WEATHER FORECAST OFFICE



Potential Storm Surge Flooding*

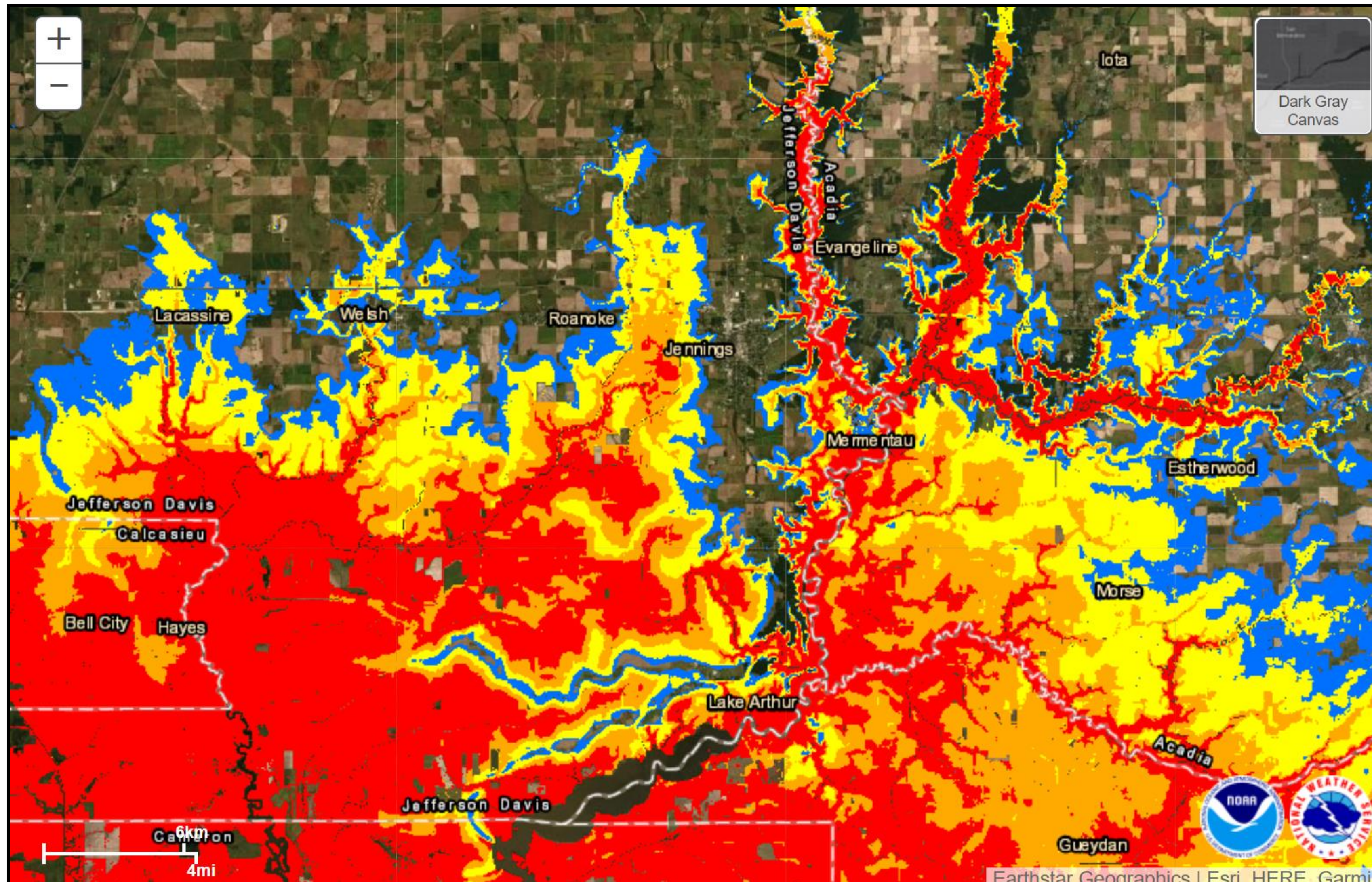
- Intertidal Zone/Estuarine Wetland
- Greater than 1 foot above ground
- Greater than 3 feet above ground
- Greater than 6 feet above ground
- Greater than 9 feet above ground
- Leveed area
Consult local officials for flood risk

Storm Surge-southwest Louisiana

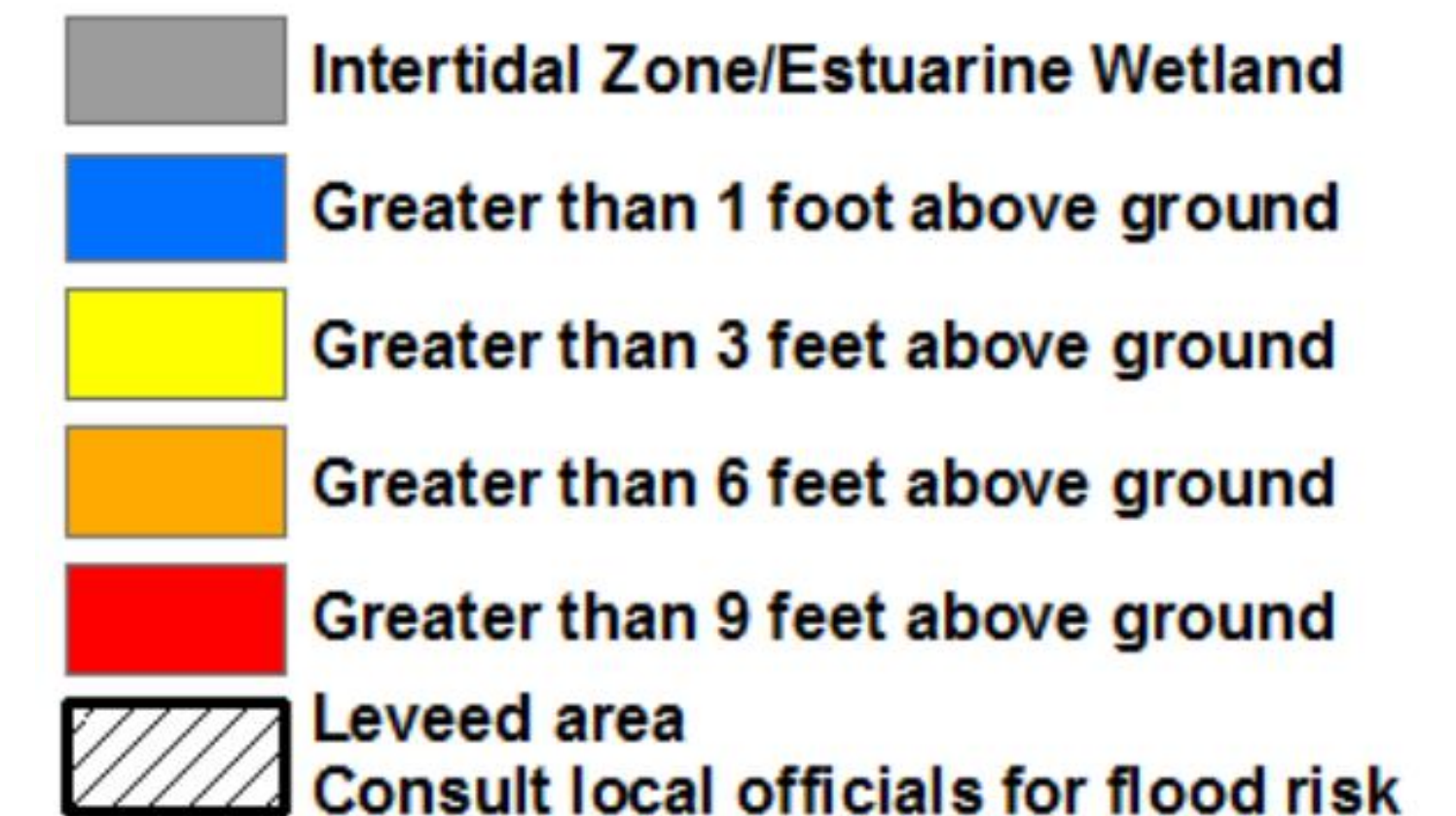
Hurricane Laura



Lake Charles
WEATHER FORECAST OFFICE



Potential Storm Surge Flooding*

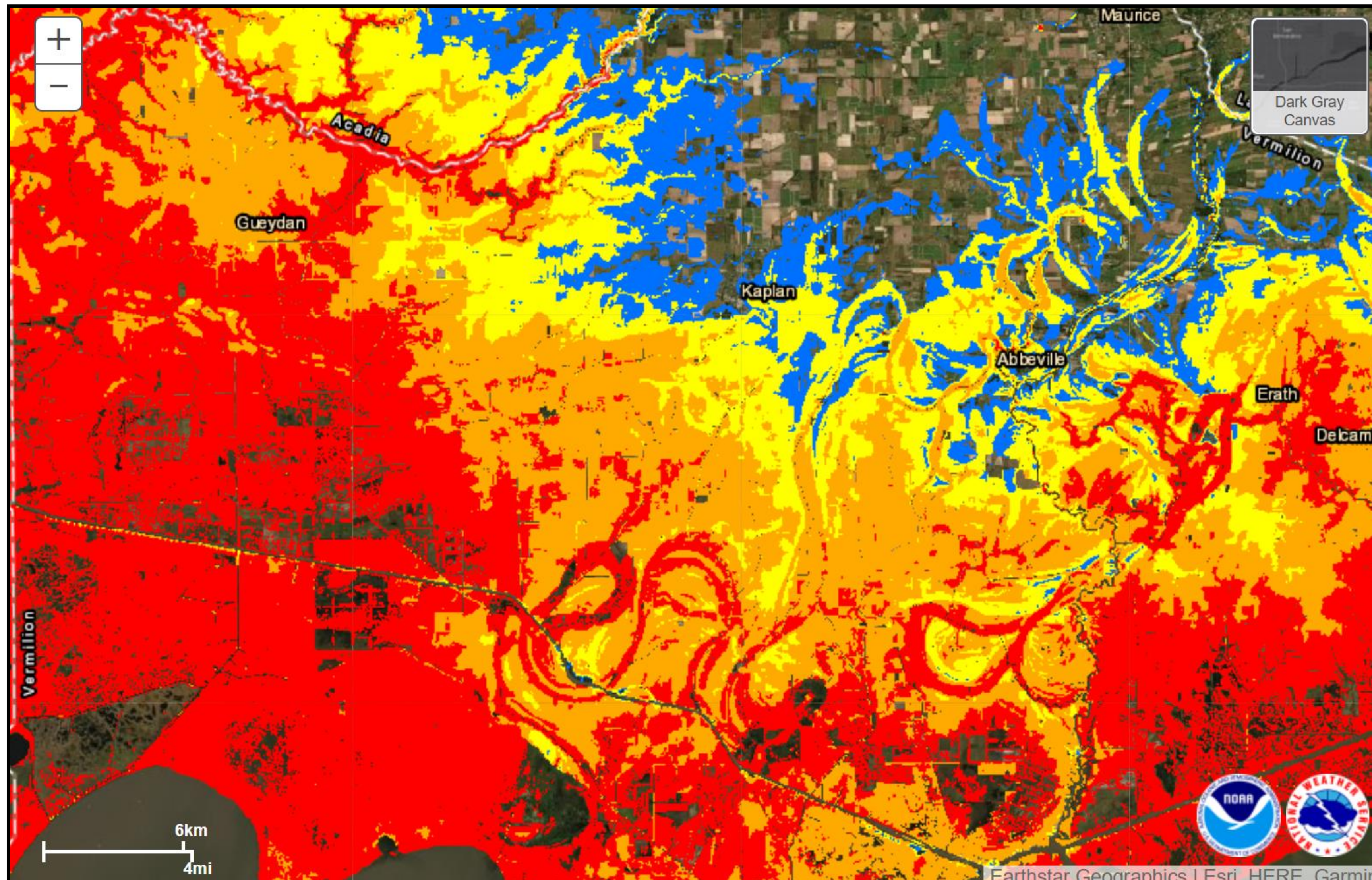


Storm Surge-south central Louisiana

Hurricane Laura



Lake Charles
WEATHER FORECAST OFFICE



Potential Storm Surge Flooding*

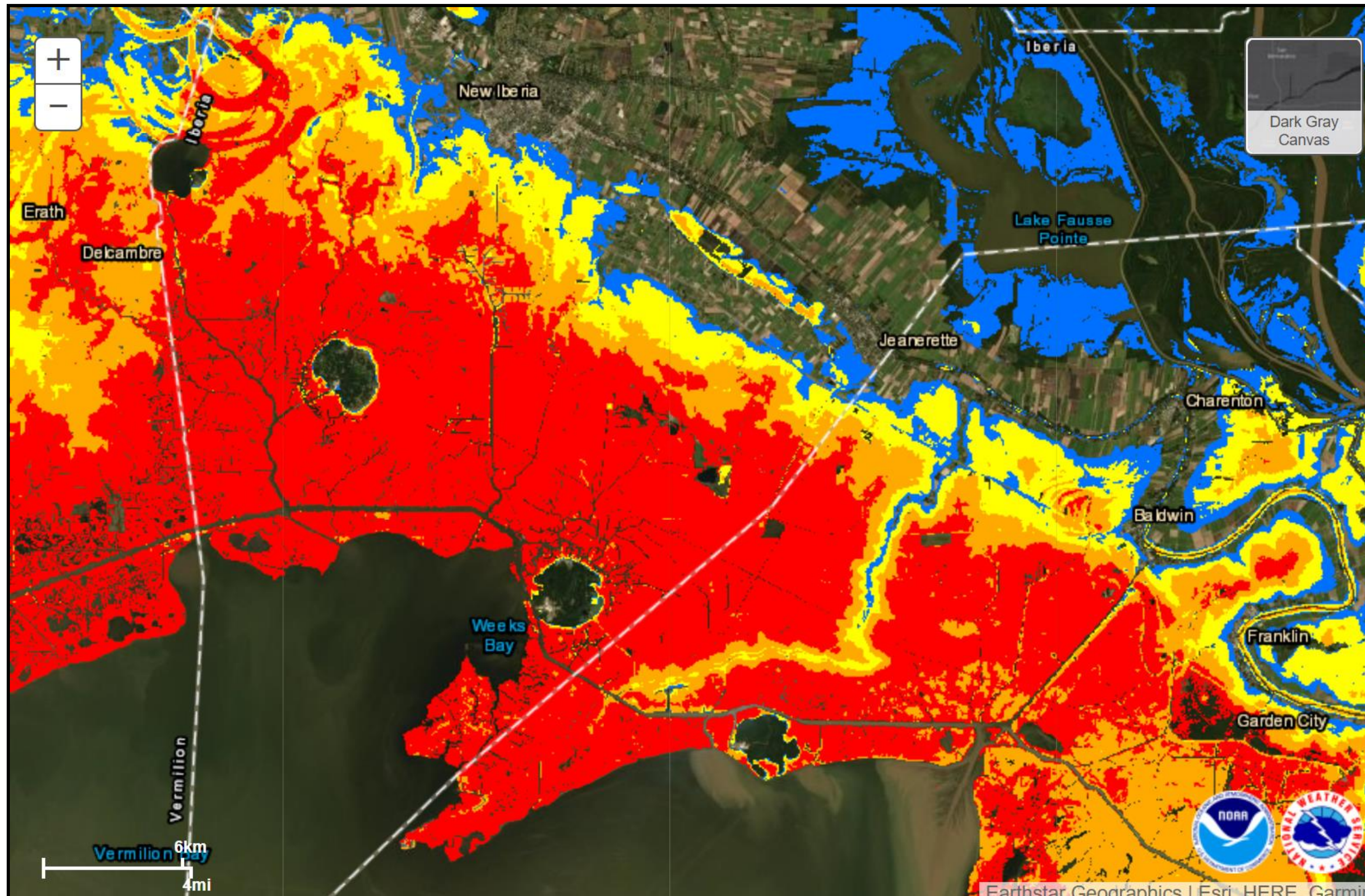
- Intertidal Zone/Estuarine Wetland
- Greater than 1 foot above ground
- Greater than 3 feet above ground
- Greater than 6 feet above ground
- Greater than 9 feet above ground
- Leveed area
Consult local officials for flood risk

Storm Surge-south central Louisiana

Hurricane Laura



Lake Charles
WEATHER FORECAST OFFICE



Potential Storm Surge Flooding*

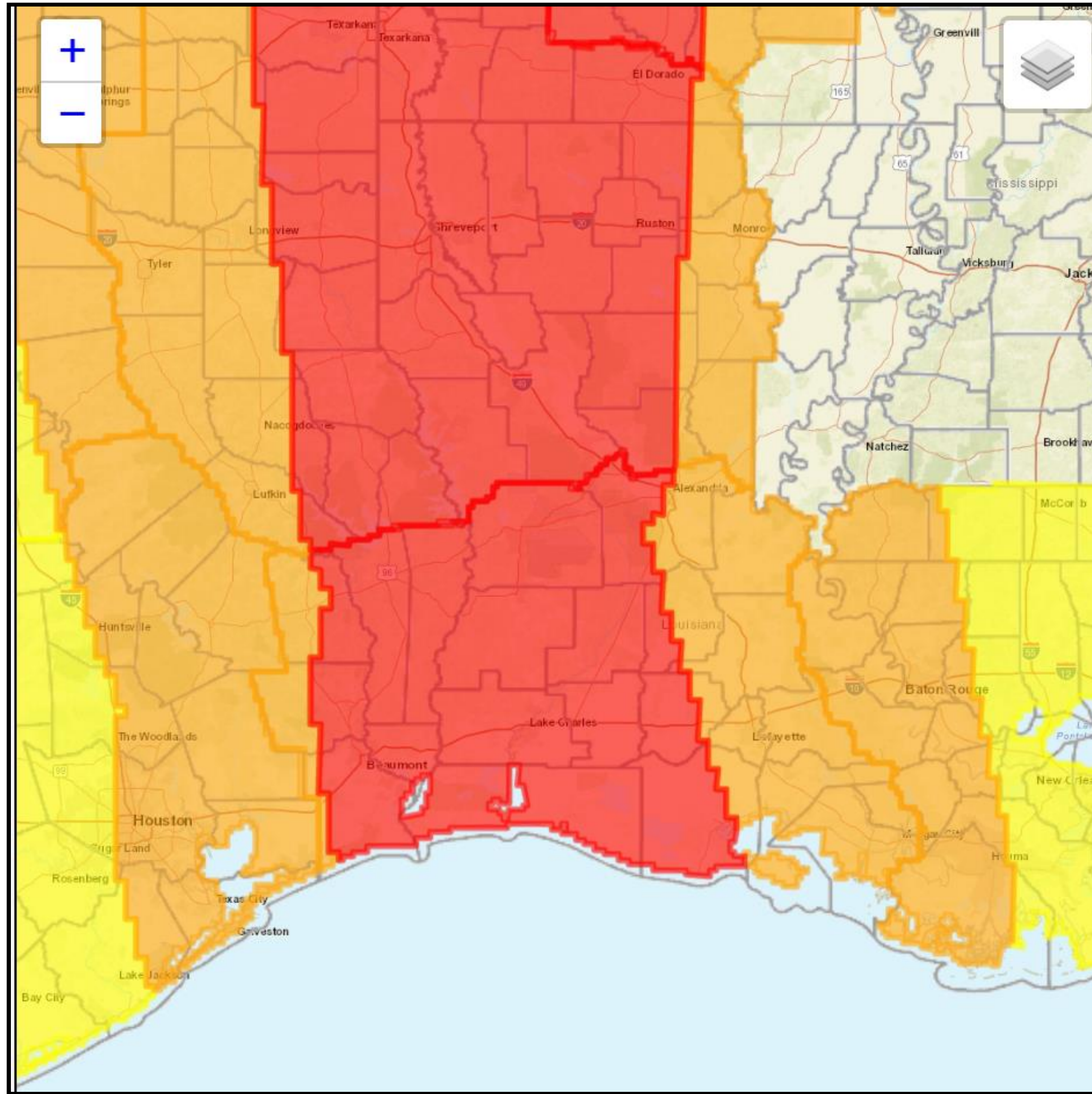
- Intertidal Zone/Estuarine Wetland
- Greater than 1 foot above ground
- Greater than 3 feet above ground
- Greater than 6 feet above ground
- Greater than 9 feet above ground
- Leveed area
Consult local officials for flood risk

Inland Flooding Impacts

Hurricane Laura



Lake Charles
WEATHER FORECAST OFFICE



- Areas outlined in red have the greatest potential for flash flooding late Wednesday and Thursday.
- Expect flooded roads and water rescues in areas with the heaviest rain.

Flooding Rain Threat

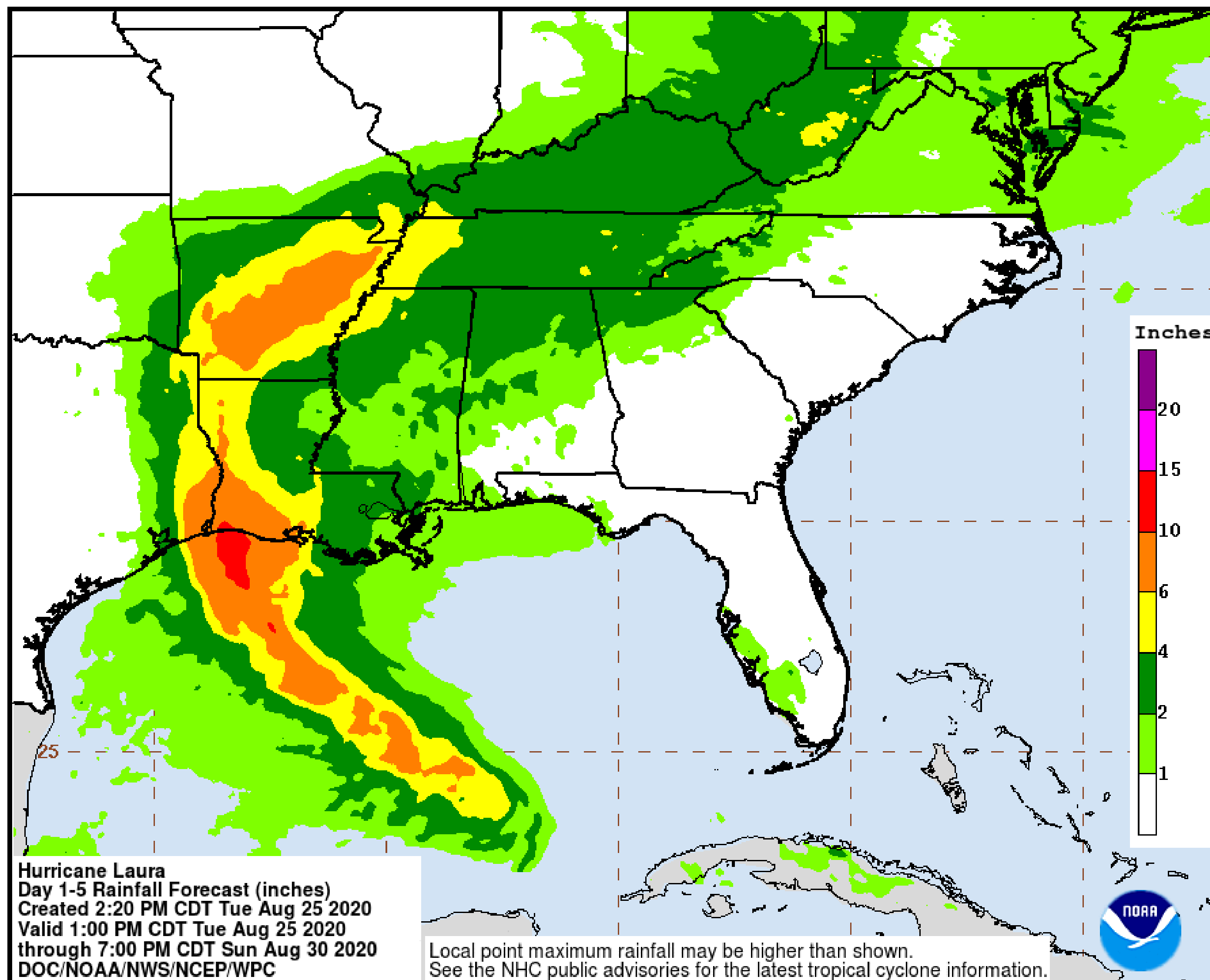
Potential for extreme flooding rain	Potential for major flooding rain	Potential for moderate flooding rain	Potential for localized flooding rain	Little to no potential for flooding rain
-------------------------------------	-----------------------------------	--------------------------------------	---------------------------------------	--

Rainfall Forecast

Hurricane Laura



Lake Charles
WEATHER FORECAST OFFICE



Five to ten inches of rain is possible near and to the right of where Laura makes landfall.

Locally higher amounts of 15 inches are possible.

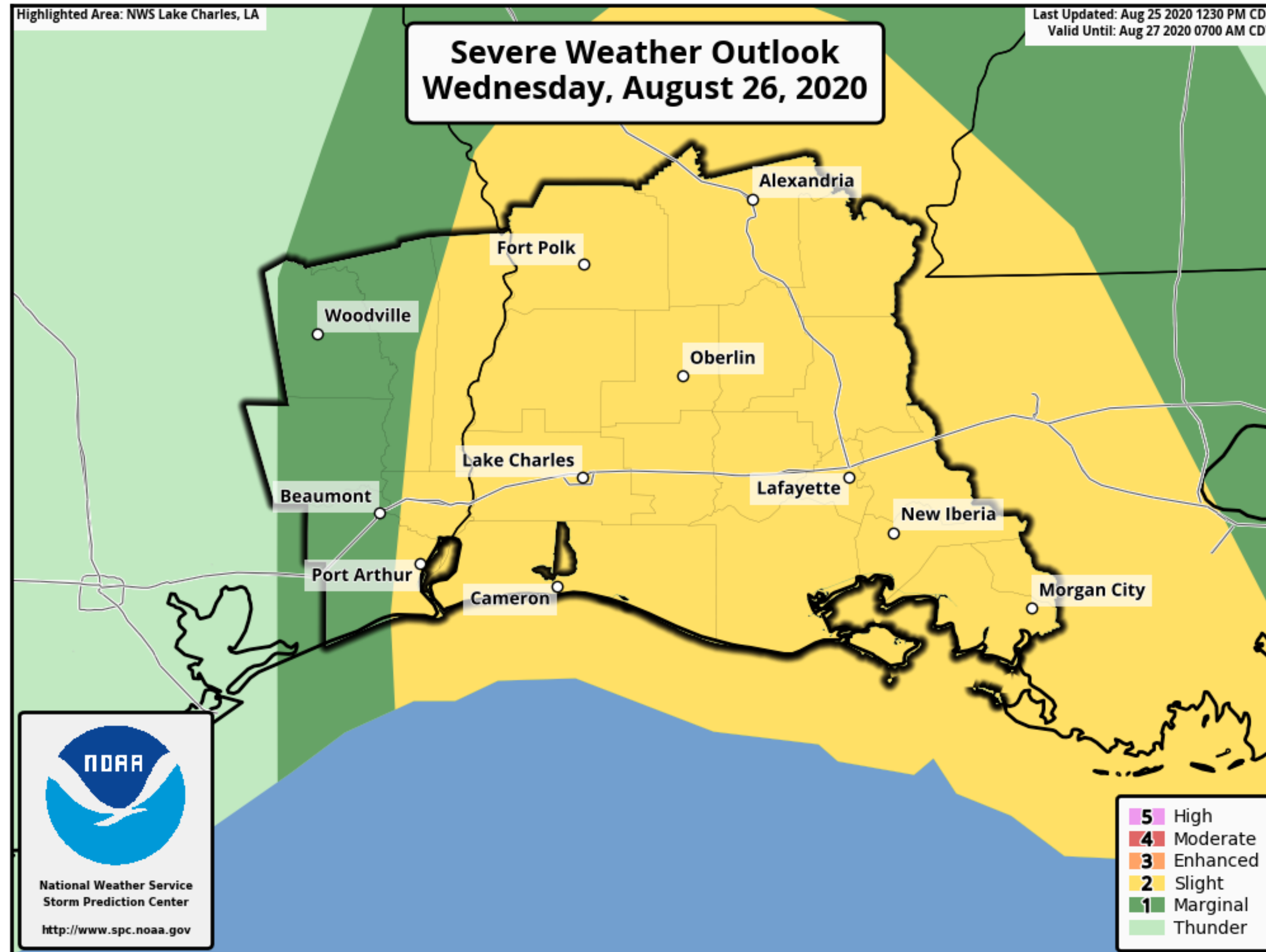
The timing of this heavy rain is starting Wednesday and continuing into Thursday.

Tornado Forecast

Hurricane Laura



Lake Charles
WEATHER FORECAST OFFICE



**Slight risk extended into
southeast Texas now**

As rain bands start to approach the coast, isolated tornadoes will be possible, starting on Wednesday, and extending into Thursday.

Potential Weather Impacts

Hurricane Laura



Lake Charles
WEATHER FORECAST OFFICE

- **Winds:** Tropical Storm force winds start Wednesday and could last 12-20 hours into Thursday. Hurricane force winds will start early Thursday and end Thursday afternoon and could last 4-8 hours. Expect widespread power outages, trees downed, and homes and businesses damaged.
- **Storm Surge:** At the coast, water will be 9 to 13 feet above ground level. Storm surge will back up rivers and bayous and flood over 30 miles inland. Catastrophic and life threatening flooding is expected.
- **Rainfall:** 5 to 10 inches with locally 15 inches of rain is expected starting Wednesday into Thursday. This rainfall will have a hard time draining due to the storm surge. This will result in flooded roads and water rescues will be necessary if people are on the road or stay in vulnerable locations.
- **Tornadoes:** Tornadoes will be possible in the eyewall as the hurricane approaches the coast, as well as outer rain bands starting Wednesday into Thursday.

Key Take-Aways

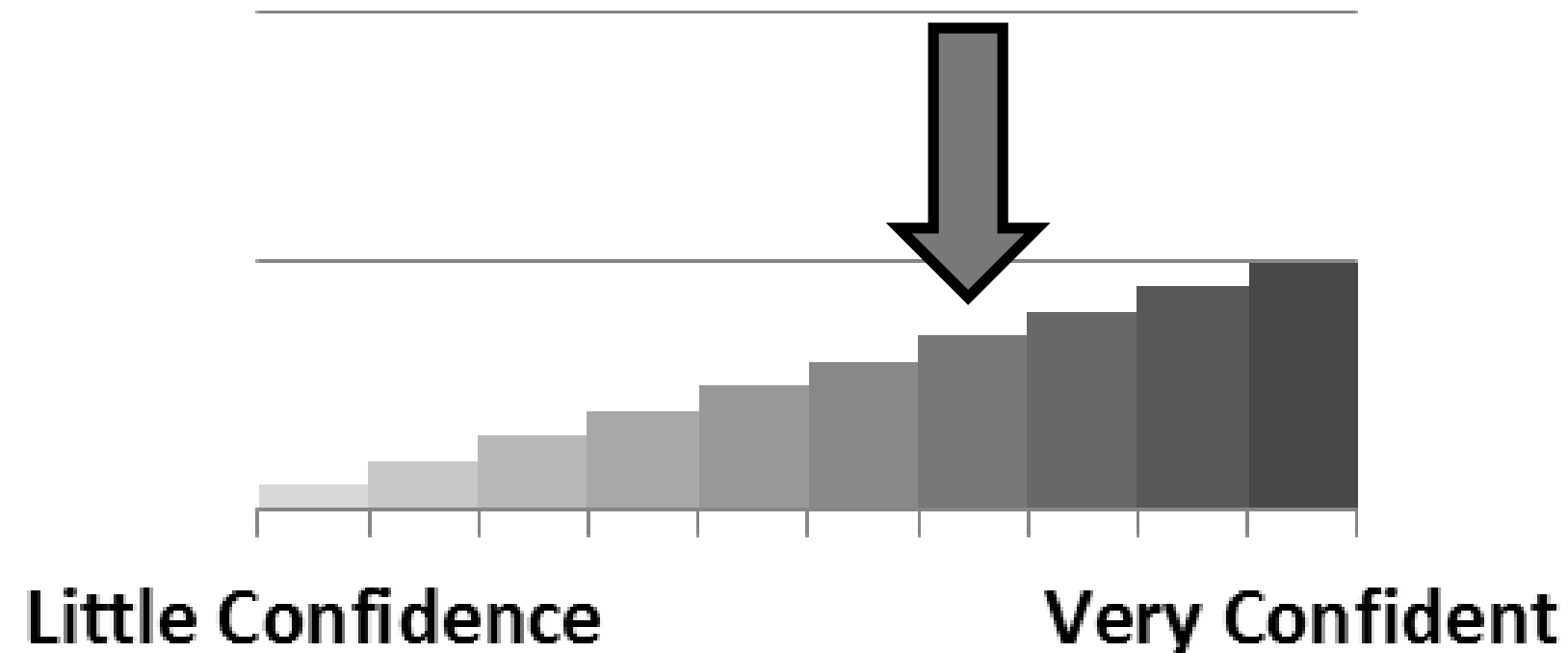
Hurricane Laura



Lake Charles
WEATHER FORECAST OFFICE

- Hurricane Laura has the potential to rapidly intensify over the next 24 hours. The landfall projection shows southeast Texas and southwest Louisiana late Wednesday night/early Thursday morning as a category three.
- The storm surge forecast is 9 to 13 feet above ground level for coastal areas. A storm surge warning is now in effect. Catastrophic and life threatening flooding is expected.
- Hurricane warnings are now in effect for all of southeast Texas and most of southwest Louisiana. Expect widespread power outages, trees downed, homes and businesses damaged.
- Rainfall of 5 to 10 inches with locally 15 inches will cause flooded roads. This rainfall will have a hard time draining due to the storm surge. Water rescues will likely be required if people are on the road.

Forecast Confidence



We have medium confidence in the track and intensity of Laura.