

CHAIRMAN'S LETTER

Dear Members,

We will have a special guest at our July meeting. Brenda Beadle, Capital Projects Manager, with the City of Beaumont, will speak about the condition of the Tyrrell Park Community Building. She will also explain the options the city is exploring to preserve this important CCC built landmark.



Tyrrell Park Community Building
Exterior

Photo Credit: Leslie McMahan

If possible, please attend this meeting to assist the commission in asking the questions we all have on how the preservation of this landmark can be achieved.

Thank you for your time and talents.

Theresa Goodness, JCHC Chair

VOLUME 2013, ISSUE 4

In this issue:

Chairman's Letter	1
DSA Award	2
Mystery Solved	3
THC News	3

JULY, 2013

Special points of interest:

- * Next Meeting.
- * Volunteer Hours.
- * Mini-museum
- * CLG News

CERTIFIED LOCAL GOVERNMENT NEWS

On July 16, 2013, the CLG Committee had a conference call with Marcus Watson, CLG Program Coordinator and Brad Patterson, Community Heritage Program Director, at the Texas Historical Commission. The conference call covered a constructive review of JCHC's

2012 Certified Local Government (CLG) Grant Request, suggestions and strategies to strengthen JCHC's pending 2013 CLG Grant request, and identification of potential projects to develop historical context, including an offer of guidance to learn more

about the survey process and develop a research design for a future Historic Preservation Plan, and ideas for budget development, matching funds, donations, and how they are applied in the budget review process of CLG Grant Requests.

JCHC RECEIVES 2012 DISTINGUISHED SERVICE AWARD



Linda McMahan, JCHC Coordinator
and Theresa Goodness, Chair
Photo Credit: Paul Prosperie

On Monday, July 15, 2013, Jefferson County Commissioner's Court presented the Jefferson County Historical Commission with the 2012 Distinguished Service Award from the Texas Historical Commission.

Theresa Goodness, Chair, Paul Prosperie, Secretary Treasurer, and Linda McMahan, JCHC Coordinator, were in attendance to accept the award on behalf of the Commission.

The award is recognition for our members' 2647 volunteer hours in 2012 working to preserve history in our county.

The County Judge and Commissioners congratulated us on our achievement, and we in turn, thanked the Court for our great working relationship and all of the help and support given to us in our endeavors.

NEXT JCHC MEMBERSHIP MEETINGS IN 2013

July 25, 2013	Noon	JCHC Conference Room—Third Floor
September 26, 2013	Noon	JCHC Conference Room—Third Floor
December 5, 2013	Noon	JCHC Conference Room—Third Floor

VOLUNTEER HOURS

Any work in the preservation or promotion of Jefferson County History may be counted toward your volunteer hours. JCHC meetings and travel time to and from meetings also count as volunteer hours. Members are reminded that at least 50 hours of volunteer work per year is required of each member. (Emeritus members do not have to meet this requirement.)

Also with the number of hours, JCHC needs a general description of work performed, for example: 3 Hours – Marker Survey.

If you have any questions, please call the office at 409-835-8701 or contact Linda via email at histcomm@co.jefferson.tx.us

PRESERVATION PARTNERS

Beaumont Heritage Society
Landmark Commission
Texas Historical Foundation
Friends of Sabine Pass Park
Beaumont Main Street
Museum of the Gulf Coast

MYSTERY SOLVED BY LESLIE MCMAHEN

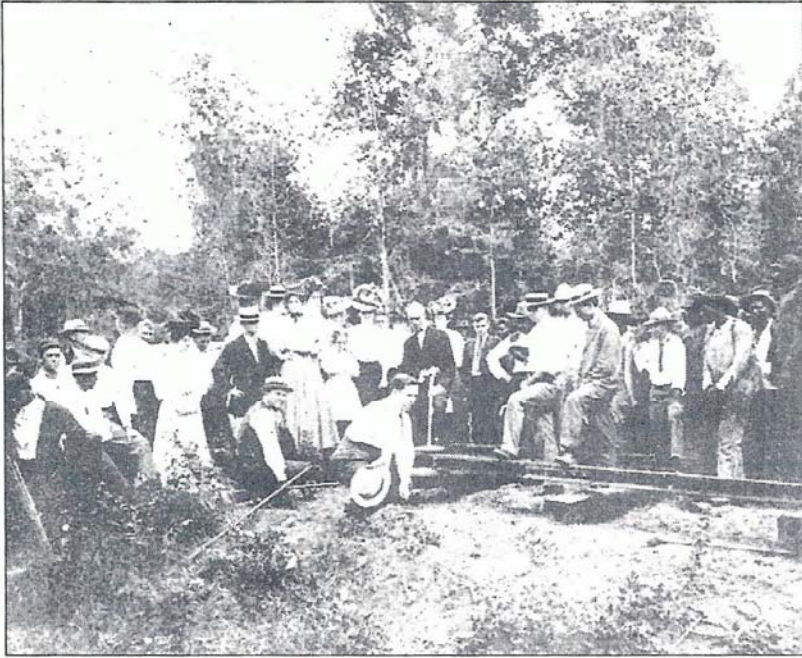


Photo courtesy of Tyrell Historical Library

A crowd watches as a ceremonial golden spike goes into the track connecting the Beaumont, Sour Lake and Western Railroad with the St. Louis-San Francisco Railway Company on July 19, 1907. The combined rail system reached into the nation's Wheat Belt and Cotton Belt. The Frisco system, as it was known, served nine states, including one route that stretched from St. Louis, Mo., across two states and into Texas at four points.

On December 14, 2000, the Beaumont Enterprise published a picture of the connection of the Beaumont, Sour Lake and Western Railroad to the Frisco System, probably at Sour Lake, Texas. The caption on the picture was somewhat of a mystery since the Frisco System's closest destination point in Texas at that time was in the northern part of the state.

The mystery of the caption was solved when Les McMahan was doing some research regarding the Colorado Southern, New Orleans and Pacific Railroad. It was discovered that in the early 1900s, the Frisco System and the Rock Island System either bought or built a number of connecting railroads in the southern states as a means to extend their control of railroad traffic. One such connecting railroad built by the Frisco System was the extension of the Beaumont, Sour Lake and Western from Sour Lake to Houston. That line from Beaumont to Houston eventually became part of the Gulf Coast Lines, later the Missouri Pacific Railroad, and now the Union Pacific Railroad.

TEXAS HISTORICAL COMMISSION NEWS

The Texas Historical Commission (THC) has started a new weekly social media feature called "Marker Mondays" which spotlights subjects, events, activities, and sites from the THC's Historical Marker Program. Every Monday on the agency's Facebook, Twitter, and Instagram pages, a different marker or marker program activity is featured, often with a photo or links to the full marker text. The THC is encouraging followers to share their own marker photos on its Facebook timeline, or on Twitter or Instagram using the #MarkerMonday hashtag. With more than 15,000 historical markers across the state, the marker program is one of the most visible programs of the THC, commemorating such diverse topics as the history of buildings, events that changed the course of history, military and final resting sites, and individuals who made lasting contributions to Texas.

To view the new "Marker Monday" feature, or share your own marker photos, visit the THC's Facebook page at www.facebook.com/TexasHistoricalCommission. Follow along on Twitter at @TxHistComm or Instagram at txhistcomm, both using the #MarkerMonday hashtag.

Article from THC's website: <http://www.thc.state.tx.us/news-events/press-releases/start-your-week-dose-texas-history>

AREA MUSEUM UPCOMING EVENTS

Museum of the Gulf Coast

Temporary Exhibits

- *Lincoln, The Constitution, and the Civil War*

August - September 2013

- *Requiem for Steam: Railroad Photographs of David Plowden*

October - December 2013

Credit: <http://www.museumofthegulfcoast.org/rotating-exhibits.html>



Museum of the Gulf Coast
Photo Credit: museumofthegulfcoast.org



Chambers House
Photo Credit: chambershouse.org

Chambers House

The Beaumont Heritage Society welcomes visitors to the Chambers Historical House Museum. The House is open for tours Tuesday through Friday from 10:00 a.m. until 3:00 p.m. Saturday tour hours are from 10:00 a.m. until 2:00 p.m. Admission fee is \$3.00 for adults, \$2.00 for senior citizens and \$1.00 for students. Groups of 10 or more, please call (409) 832-4010 for reservations.

Credit: <http://www.chambershouse.org/>

McFaddin Ward House

May 21 @ 10:00 am - July 31 @ 5:00 pm

See our newest exhibit in the visitor center! Write This Way highlights some of the writing implements used over the 20th century by the McFaddins. From beautiful, hand-embroidered paper, to state-of-the-art 1930s portable typewriter, the always-stylish McFaddins knew how to keep up with the trends. Join us in this look back at the art of the written word for "Write This Way."

Credit: <http://mcfaddin-ward.org/events/>



McFaddin Ward House
Photo Credit: mcfaddin-ward.org

**JEFFERSON
COUNTY
HISTORICAL
COMMISSION**

1149 Pearl Street
Third Floor
Beaumont, TX 77701

Tel: 409-835-8701

E-mail:

histcomm@co.jefferson.tx.us
Linda McMahan, Coordinator



*To preserve and
promote history within
the County.*

We're on the web!
<http://co.jefferson.tx.us/>



Tyrrell Park Community Building
Interior

Photo Credit: Leslie McMahan

Jefferson County Historical Commission

Executive Board 2013 - 2014

Chairman, Theresa Goodness

Vice-Chairman, Les McMahan

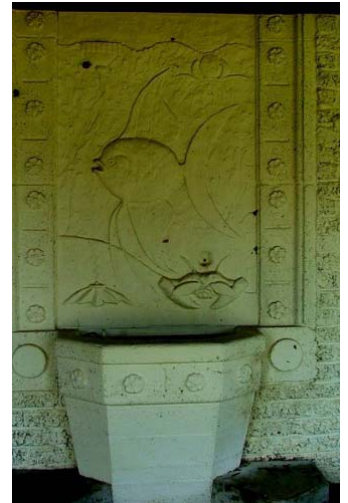
Secretary/Treasurer, Paul Prosperie

Immediate Past Chairman, Ron Ellington



Tyrrell Park Community Building
Details

Photo Credit: Leslie McMahan



**JCHC MINI-MUSEUM
JULY 2013**

JCHC is seeking a replacement exhibit for the mini-museum.

Please contact Linda McMahan, JCHC Coordinator, if you have any suggestions.