

JCHC JOURNAL

JEFFERSON COUNTY HISTORICAL COMMISSION VOLUME 2015, ISSUE 1

CHAIRMAN'S LETTER

Dear Members,

This past year JCHC has lost several members who contributed significantly to our mission of historic preservation and to the betterment of the community at large. We honor the legacies and memories of our departed friends, Paul Tanner, Mildred Wright, and J. Earl Brickhouse.

Let us re-dedicate ourselves in 2015 to accomplish our preservation goals with renewed vigor. Thank you to our members for your time and service.

Theresa Goodness, JCHC Chair



Clockwise from top: Mildred Wright, J. Earl Brickhouse, Paul Tanner

VOLUME 2015, ISSUE 1

In this issue:

Chairman's Letter	1
J. Earl Brickhouse in Memoriam	3
Lamar Newspapers Digitized	4
Beaumont Ironworks	6

JANUARY, 2015

Special points of interest:

- * Next Meeting.
- * Volunteer Hours.
- * Mini-museum
- * THC's Statewide Travel Guide

EXPLORE TEXAS' HISTORY WITH THE THC'S NEW STATEWIDE TRAVEL GUIDE

AUSTIN, Texas —

Experience the vastness and wonder of the Lone Star State with the Texas Historical Commission's (THC)

new *Texas Heritage Travel Guide*. Encompassing all 10 Texas Heritage Trail Regions, the free statewide guide highlights historic destinations that tell

the real stories of Texas.

The guide is free and available for [download](http://www.thc.state.tx.us/explore) www.thc.state.tx.us/explore.

Credit: [THC website](http://www.thc.state.tx.us/explore)

CAPITOL EXHIBIT HIGHLIGHTS IMPORTANCE OF TEXAS' HISTORIC COUNTY COURTHOUSES

AUSTIN, Texas — January brings the start of a new legislative session in Austin, and a dynamic Texas Historical Commission exhibit highlighting the importance of Texas' historic county courthouses will greet legislators, their staffs, stakeholder groups, and other visitors to the State Capitol.

The display will debut January 27 in the Capitol's ground floor rotunda through January 31. From February 1–7 it will be in the North Gallery of the Capitol, and from February 8–14 it will be in the South Gallery.

The exhibit presents an overview of the value and benefits historic Texas courthouses provide to their host communities, from preservation of stories and unique architecture to offering a cost-effective and sustainable way to repurpose a building that is the cornerstone of the community. Benefits include increased heritage tourism, improved property values for the courthouse square, and continuing community pride.

Also featured is an overview of the Texas Historic Courthouse Preservation Program, which has restored 63 courthouses across the state to their former glory since 1999.

Visit www.thc.state.tx.us/thcpp for more information about efforts to preserve Texas' historic courthouses.

Credit: Texas Historical Commission webpage, [Capitol Exhibit](#)

JCHC MEMBERSHIP MEETINGS IN 2015

January 22, 2015	Noon	Ben Rogers Regional Visitors Ctr., 5055 I-H 10 South, Beaumont, TX
February 19, 2015	11:00 a.m.	Jefferson County Courthouse, Commissioners Courtroom Fourth Floor, 1001 Pearl St., Beaumont, TX (Annual Meeting for Election of Officers)
March 26, 2015	Noon	Ben Rogers Regional Visitors Ctr., 5055 I-H 10 South, Beaumont, TX
May 28, 2015	Noon	Ben Rogers Regional Visitors Ctr., 5055 I-H 10 South, Beaumont, TX
July 23, 2015	Noon	Ben Rogers Regional Visitors Ctr., 5055 I-H 10 South, Beaumont, TX
September 24, 2015	Noon	Ben Rogers Regional Visitors Ctr., 5055 I-H 10 South, Beaumont, TX
November 19, 2015	Noon	Ben Rogers Regional Visitors Ctr., 5055 I-H 10 South, Beaumont, TX

VOLUNTEER HOURS AND MEMBERSHIP

Any work in the preservation or promotion of Jefferson County History may be counted toward your volunteer hours. JCHC meetings and travel time to and from meetings also count as volunteer hours. Members are reminded that at least 50 hours of volunteer work per year is required of each member.

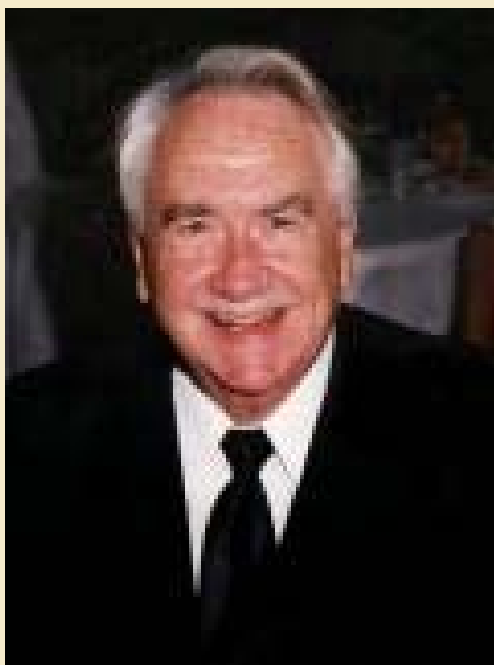
(Emeritus members do not have to meet this requirement.) Also with the number of hours, JCHC needs a general description of work performed, for example: 3 Hours – Marker Survey.

If you have any questions, please call the office at 409-835-8701 or contact Linda via email at hstcomm@co.jefferson.tx.us

PRESERVATION PARTNERS

Beaumont Heritage Society
Landmark Commission
Texas Historical Foundation
Beaumont Main Street
Museum of the Gulf Coast

J. EARL BRICKHOUSE IN MEMORIAM



The Commission has lost another stalwart member in 2014. Our friend Earl Brickhouse has passed from this world to the next, and we remember his many efforts to improve our community and to preserve our history. His obituary reprinted here gives a glimpse of the kind of man he was, and we will remember him fondly.

1931 - 2014 James Earl (J. Earl) Brickhouse, 83, of Beaumont, died December 31, 2014, of cardiac arrest. Known for his robust sense of humor, he was the life of the party, and threw many with his beloved wife Jean. He was a devoted family man, devout Catholic, and a major advocate of volunteerism. A native Beaumont, Brickhouse was born May 18, 1931. He graduated from St. Anthony High School, earned an Associate Arts degree from Lamar Junior College in 1950, served in the Army during the Korean Conflict, and earned a Bachelor of Arts degree from The University of Texas in 1955. Brickhouse retired from Lamar University in 1995 as executive director for Public Affairs. Before Lamar, he was executive di-

rector of the Beaumont Convention and Visitors Bureau where he established the first Visitor Information Center and Babe Didrikson Zaharias Museum. After retirement, Brickhouse directed Conn's Appliance employees to participate in Beaumont Independent School District's School/Business Partnership reading program and was honored as Outstanding School Volunteer at Lucas Elementary School. He was president and board member of many organizations including: American Red Cross (honored as Hurricane Earl for outstanding service), Babe Didrikson Zaharias Foundation, Beaumont Association of Mental Health, Beaumont Community Players, Beaumont Public Schools Foundation, Jefferson County Historical Commission, Jefferson Theatre Preservation Society, Julie Rogers Gift of Life program, Spindletop Optimist Club, and Tyrrell Historical Library Association. Brickhouse was also a proud lector at St. Anne Catholic Church where he attended Mass daily. Brickhouse is survived by his sons, Ronald J. and Jeffrey Len Theis, and James Earl Brickhouse, Jr. He is preceded in death by his wife of forty-four years, Jean, of whom he said, My life really began when I met her. J. Earl is also preceded in death by his parents, Robert and Mabel Brickhouse; sisters, Carol Brickhouse and Stella Russell; and brother, Robert Brickhouse. A gathering of Brickhouse's family and friends will be from 5:00 p.m. until 7:00 p.m., with his Christian Vigil at 6:00 p.m., Friday, January 2, 2015, at Broussard's, 2000 McFaddin Avenue, Beaumont. A Mass of Christian Burial will be celebrated at 10:00 a.m., Saturday, January 3, 2015, at St. Anne Catholic Church, 2715 Calder, Beaumont, with his interment to follow at Forest Lawn Memorial Park, Beaumont. Memorial contributions may be made to American Red Cross, Beaumont Chapter at: <http://www.redcross.org/tx/beaumont>, 3260 Eastex Freeway, Beaumont, TX 77703 or to Lewy Body Demetia Association at: <http://www.lbda.org/>; 912 Killian Hill Road SW, Suite 202C, Atlanta, GA 30047. Complete and updated information may be viewed at: broussards1889.com

LAMAR NEWSPAPERS NOW DIGITIZED



70 YEARS OF LAMAR'S SCHOOL NEWSPAPERS NOW AVAILABLE ONLINE @: <http://tinyurl.com/univpress>



NEWSPAPERS CAN ALSO
BE VIEWED ON THE
PORTAL
TO TEXAS HISTORY @:
texashistory.unt.edu

FOR MORE INFORMATION, CONTACT:

Penny Clark, University Archivist
Penny.Clark@lamar.edu
(409)880-7787

or

Charlotte A. Holliman, Special Collections
Charlotte.Holliman@lamar.edu
(409)880-8660



"This program is funded (in part) by a grant from the U.S. Institute of Museum and Library Services and Texas State Library and Archives Commission. (2014)"

HISTORY ROAD RALLY IN CONROE

MONTGOMERY COUNTY HISTORICAL COMMISSION'S
HISTORY ROAD RALLY
Explore Life in the Past Lane



Saturday, January 24, 2015
Historic Conroe, Texas

First Baptist Church Gymnasium
(Downtown Conroe at 600 Main & Cochran Streets)

CHECK IN (Rain or Shine): Noon - 1pm
ROAD RALLY START: 1:30pm
TEAMS BEGIN TO RETURN: 3:30pm
FREE MEALS AND TEAM RECOGNITION: 4:30pm

Teams of 2 - 5 participants per vehicle
Pre-Registration Fee of \$30 per vehicle
Registration Fee of \$40 on Day of Event

TROPHIES AND PRIZES TO WINNING TEAMS

Sponsored by Gullo Ford of Conroe,
Gullo Mazda of Conroe & Gullo Toyota of Conroe

More info at our Website: www.montgomerycountyhistoricalcommission.com
Call 936-525-7311 or 936-537-9070 to register and for more information.

BEAUMONT IRON WORKS BY LES MCMAHEN

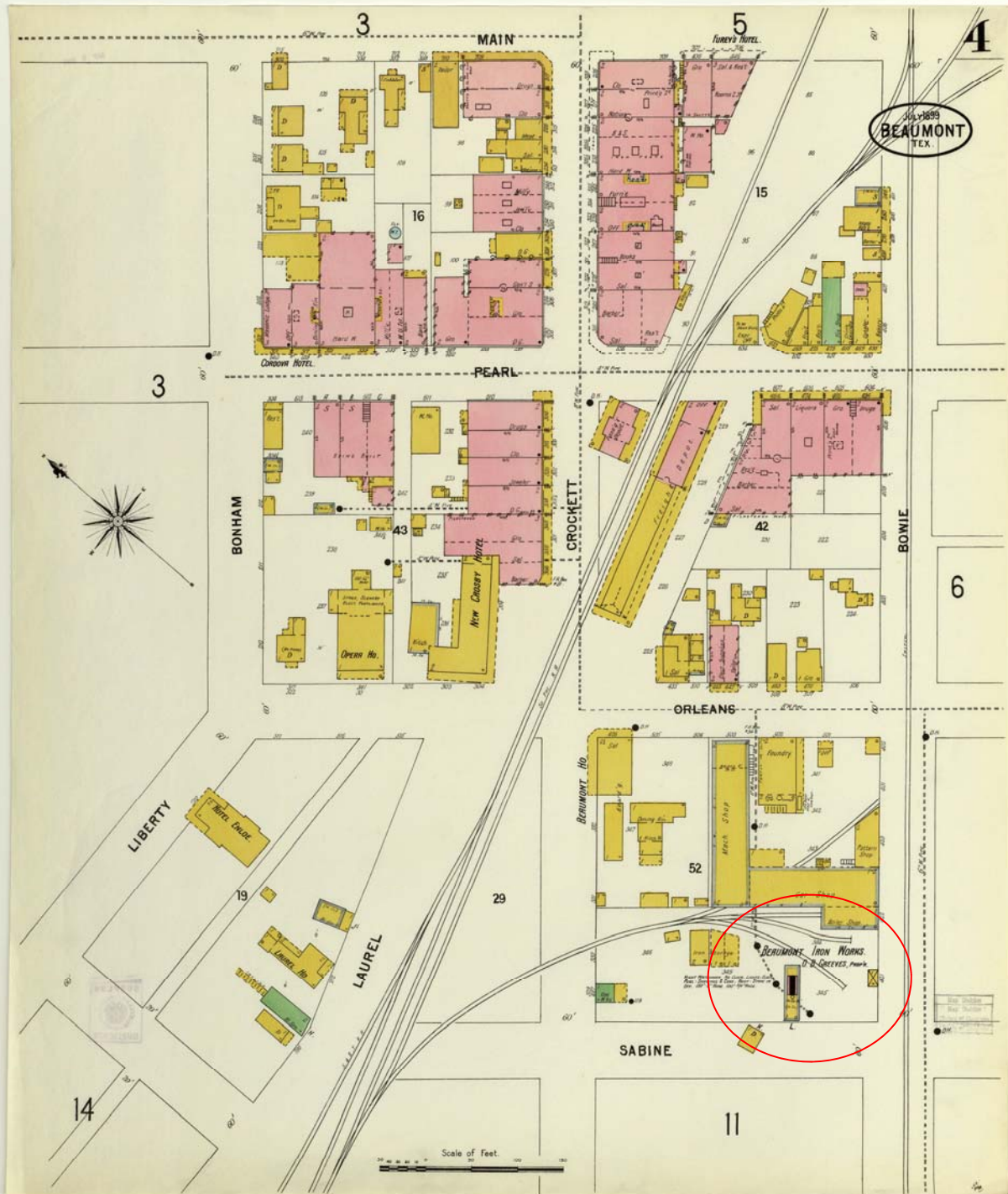
In a “did-you-know” story in a 2011 edition of the JCHC Newsletter, I gave information about a September 1891 article in the New England Magazine about the Beaumont Car Works Company that was under construction in Beaumont. The company was to build railroad cars of various types, with ultimate production set at 40 cars per day. Information in W.T. Block’s body of work indicated that the company primarily built box cars, but also cars for the lumber and logging industry, but no other information was ever located to prove that the company existed for any length of time or exactly where it was located. That is, until now.

I recently located an article in the September, 2002 issue of *The Pine Bough* published by The History Center in Diboll, Texas, that shed some light on the matter. In that issue, an April 21, 1895 clipping from the Houston Post stated that “The Beaumont Iron Works on Tuesday shipped six logging cars to Texarkana for the Southern Pine Lumber Company. These cars are of a design and patent made only by the Beaumont Iron Works, and are the first shipment of a large order recently placed by the Texarkana concern.” A caption accompanying the clipping noted that the cars for SPLCo (later Temple Industries) were most likely shipped directly to the company’s mill at Diboll over the Southern Pacific Railroad, rather than to the company’s main offices in Texarkana.

JCHC member Steven Lewis located Beaumont Iron Works on an 1889 Beaumont Sanborn map as being on Orleans Street just southwest of the Southern Pacific depot and tracks, which would have been an ideal place to deliver rail cars to the Southern Pacific for shipment. Coordinator Linda McMahan located a listing for Beaumont Iron Works as late as 1921-1922 in our copies of the Beaumont City Directories. It is unknown at this time how long BIW may have produced railroad cars at their site, and of course there is the always mystifying difference in the names associated with the company. The Mid-Continent Railway Museum has a database of private railroad car builders, and they list the company as the Beaumont Iron Works. Hopefully more information will surface at a later date.

See next page for a view of the Sanborn Map.

BEAUMONT IRON WORKS CONTINUED BY LES MCMAHEN



Original located at the Dolph Briscoe Center for American History, University of Texas at Austin

Page 4 from the 1899 Beaumont Sanborn Maps
showing the location of the
Beaumont Iron Works (bottom right-hand corner)
where rail cars were produced
in the late 1800s and early 1900s.

LINCOLN CEMETERY CLEAN-UP UNDERWAY

In December Commissioner Alfred and his staff met with Linda McMahan concerning the clean up of Lincoln Cemetery. Road and Bridge Precinct 4 crews have installed culverts and a driveway to bridge the ditch between La-belle Road and the cemetery to facilitate access for men and equipment. According to Linda, Commissioner Alfred and Mario Watkins have exhibited a keen understanding of the sensitivity of this project, and are adamant about protecting the graves and any remaining cemetery features. The few graves that have been discovered thus far at the front of the cemetery have been covered with blue tarps both for identification and protection purposes. Member Paul Prosperie has been keeping a close eye on the process and has documented the activities photographically. Some of his photos are below. Thanks to Commissioner Alfred, the Road and Bridge Precinct Four staff and to Paul for the work completed to date.



Recent Lincoln Cemetery photos
Photo Credits: Paul Prosperie

AREA MUSEUM UPCOMING EVENTS

Museum of the Gulf Coast

Feeling creative? The Museum of the Gulf Coast is celebrating the life and work of local artist Doug Jackson with a day full of art activities. Unleash the artist within, with a day filled with family fun. Best of all its FREE!

Saturday, February 21st, 2015 10 AM-2 PM

Activities Include:
The Art in Science Activities
Art Contest (see our website for details)
Mystery Craft
Sculpture
Lots of Arts and Crafts!
Free Movie Screening of "Pixar's Short Films" at 1PM



Museum of the Gulf Coast

Photo Credit: museumofthegulfcoast.org



Chambers House

Photo Credit: chambershouse.org



McFaddin Ward House

Lecture: "Making Heads & Telling Tales"

January 29 @ 6:00 pm - 9:00 pm

Visitor Center, 1906 Calder Avenue, Beaumont, TX 77701 United States

Join us for a very special lecture, as we kick off our 2015 Lecture Series at the museum. On Thursday, January 29th, Amanda Danning will join us. A forensic sculptor specializing in historic facial reconstructions, she has worked in collaboration with more than thirty museums, including several projects with the Smithsonian Institution. Her talk will weave science and art in a unique and provocative way to tell a dynamic story you won't forget. This event is free and open to the public....



McFaddin Ward House

Photo Credit: mcfaddin-ward.org

**JEFFERSON
COUNTY
HISTORICAL
COMMISSION**

1149 Pearl Street
Third Floor
Beaumont, TX 77701

Tel: 409-835-8701

E-mail:

histcomm@co.jefferson.tx.us
Linda McMahan, Coordinator



*To preserve and
promote history within
the County.*

We're on the web!
[http://co.jefferson.tx.us/
Historical_Commission/](http://co.jefferson.tx.us/Historical_Commission/)

Last Public Hanging at
Jefferson County Jail in
1903

Photo Credit:
JCHC archives



Jefferson County Historical Commission

Executive Board 2013 - 2014

Chairman, Theresa Goodness

Vice-Chairman, Les McMahan

Secretary/Treasurer, Paul Prosperie

Immediate Past Chairman, Ron Ellington

**PAUL TANNER'S PASSION FOR
ARCHEOLOGY REMEMBERED
JCHC MINI-MUSEUM
JANUARY, 2015**

Each year the Texas Historical Commission, along with the Jefferson County Historical Commission (JCHC), celebrate October as Texas Archeology Month. It is also appropriate that this is the month we are celebrating the life of former member Paul Tanner who passed away in January of this year. For many years, Paul served as the Archeology Chair for the JCHC.

Paul, an amateur scientist, helped preserve Texas Prehistory. His records and collection of artifacts from McFaddin Beach are permanently curated at the Texas Archeological Research Laboratory in Austin. Some of his personal finds

were also donated to the Jefferson County Historical Commission archives.

Paul, a quiet gentle man, will be greatly missed.

Many thanks to JCHC member Brenda Jackson, Volunteer Archeological Steward, for her hard work in putting the mini-museum exhibit together which includes photos of Paul with his collections and documentation of his many archeology finds on McFaddin Beach.

The exhibit will be on display until the restoration of the first floor of the courthouse gets underway.