

JEFFERSON COUNTY
PLEASURE ISLAND SHORE PROTECTION
REVISED BREAKWATER-MARSH RESTORATION PROJECT

Addendum No. 1**Project Extension—Additive Alternates 1 and 2**

February 6, 2012 (updated February 19, 2013 to include contract time extensions)

Owner desires to execute one or both of the additive alternates described below if funding becomes available prior to contract award. The intent of the additional work is to address an erosion hotspot located roughly one mile north of the base bid work along the Pleasure Island shoreline. This location is roughly 3,000 feet north of the MLK Bridge and directly across the channel from the Port of Port Arthur. The hotspot threatens the integrity of T.B. Ellison Parkway. As shown in Exhibit A, the south end of the additive work will connect to a previously constructed rock revetment in a similar manner as the base bid work, and the base bid typical section will be used. All provisions of the Contract Documents applicable to the base bid work will apply to the additive work.

Item 1:**ADDITIVE ALTERNATE BID 1 – 800 FT OF TYPE 1 BREAKWATER**

The Work consists of 800 ft breakwater using the Type 1 breakwater typical section found on Sheet 079A-1009-C-1005 of the Drawings.

The alignment and endpoints of the additive work will be field verified by Engineer and Contractor prior to contract execution.

Material excavated/dredged in preparation for construction of the breakwater toe may remain on site and be placed landward of the breakwater upon completion of construction, or as directed by Engineer.

End transitions of a maximum length of 10 ft shall blend with existing rock revetment (south end) and concrete riprap (north end) such that no unprotected gap remains. Pay quantities relating to end transitions may be adjusted to account for any significant variation relative to unit quantities represented in the typical section. The contract time will be extended by thirty (30) days for the work of Item 1.

Item 2:**ADDITIVE ALTERNATE BID 2 – 500 FT OF TYPE 1 BREAKWATER**

The Work consists of 500 ft breakwater using the Type 1 breakwater typical section found on Sheet 079A-1009-C-1005 of the Drawings.

The alignment and endpoints of the additive work will be field verified by Engineer and Contractor prior to contract execution.

Material excavated/dredged in preparation for construction of the breakwater toe shall remain on site and be placed landward of the breakwater upon completion of construction, or as directed by Engineer.

Add Alt 2 extends the length of breakwater included in Add Alt 1 with no transition section required between the two. An end transition of a maximum length of 10 ft shall blend with concrete riprap at the north end of new construction, adjacent to the drainage outfall at that location. Pay quantities relating to the end transition may be adjusted to account for any significant variation relative to unit quantities represented in the typical section. The contract time will be extended by thirty (30) days for the work of Item 2, in addition to the extension for Item 1.

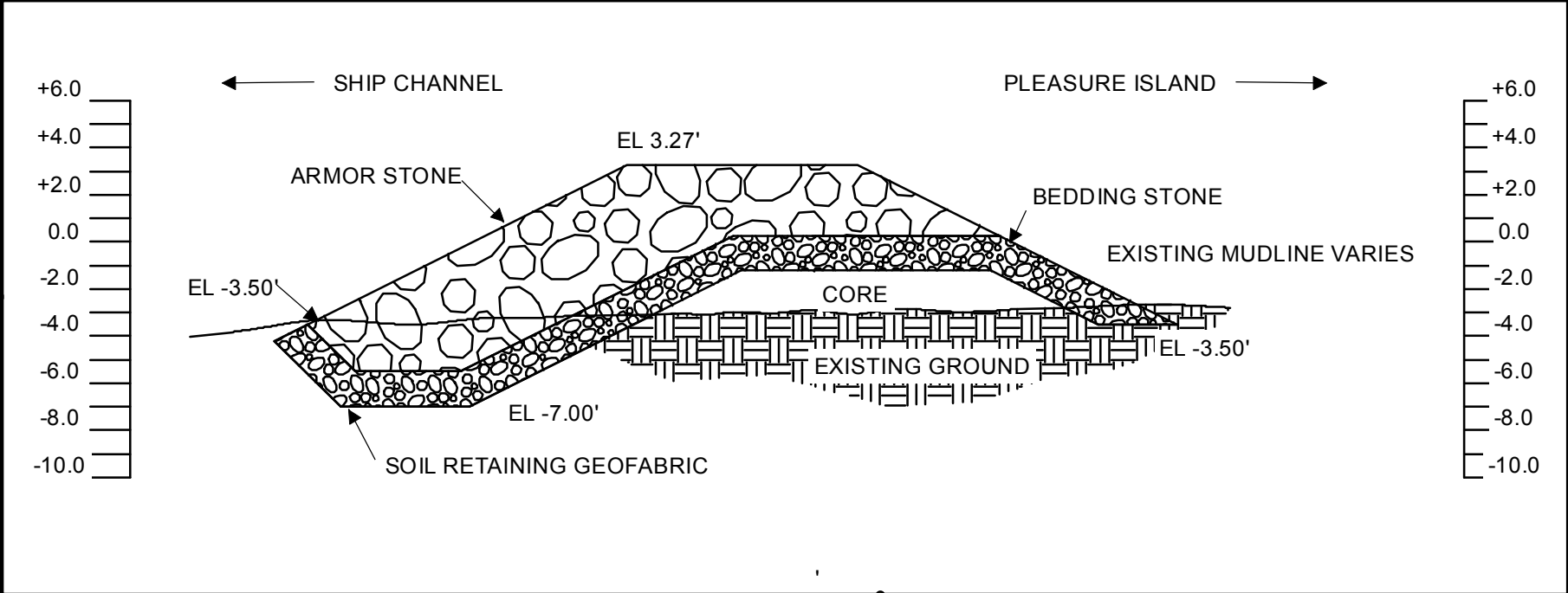
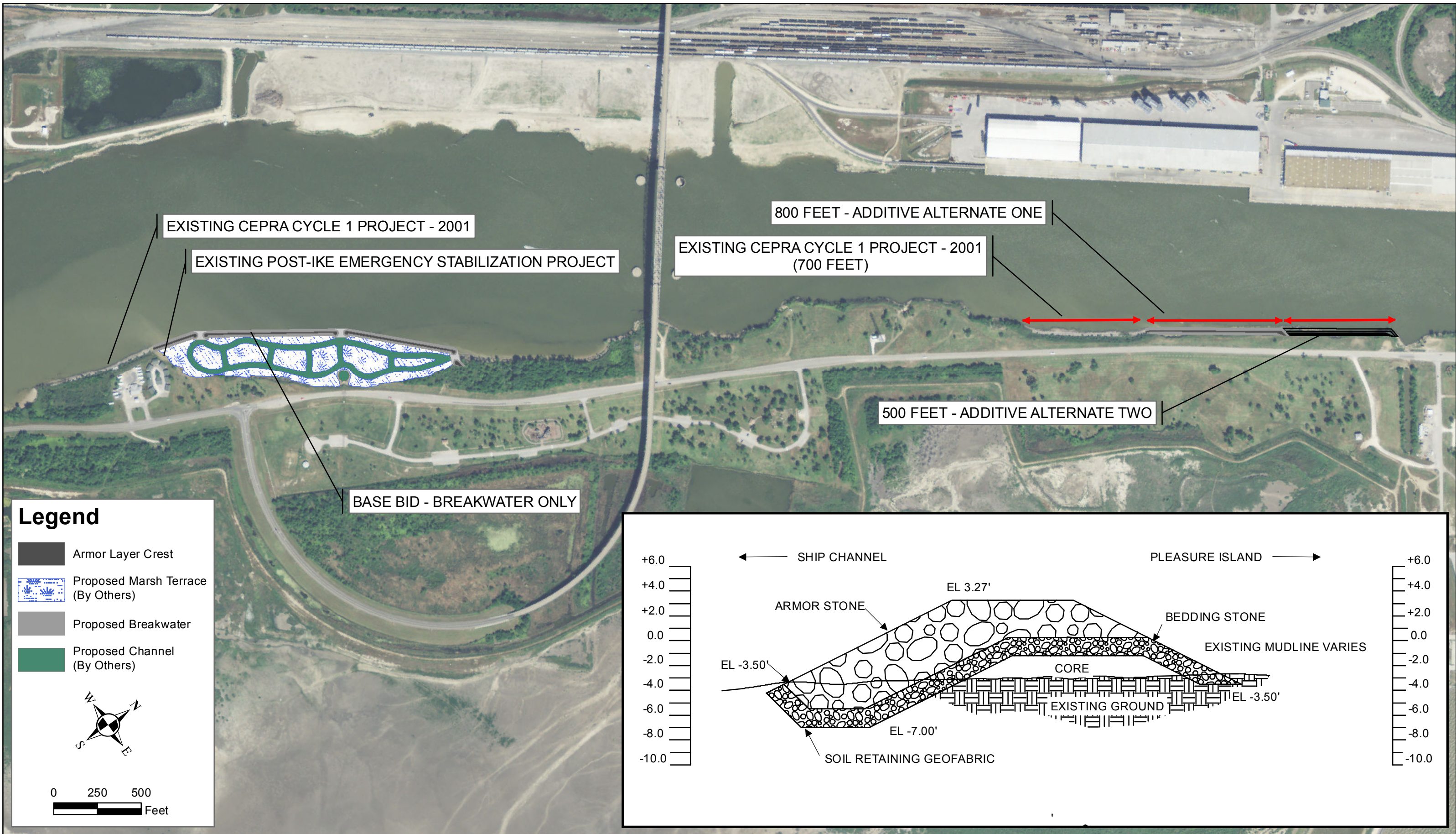
5316 Highway 290 West
Suite 150
Austin, Texas 78735

Phone 512.439.4700
Fax 512.439.4716
www.ljaengineering.com

JEFFERSON COUNTY
PLEASURE ISLAND SHORE PROTECTION
REVISED BREAKWATER-MARSH RESTORATION PROJECT

Addendum No. 1
Project Extension—Additive Alternates 1 and 2

Exhibit A



**ADDENDUM 1 - EXHIBIT A
SHIP CHANNEL EROSION PROJECT
JEFFERSON COUNTY CIAP 2007 - CAJUN CABINS TO MLK BRIDGE
PROPOSED CITY OF PORT ARTHUR PROJECT EXTENSION**

**Jefferson County
Pleasure Island Erosion Response
Pleasure Island, Jefferson County, Texas**

PRJ#: B079A-1009

Date: 02/06/13

Rev: 0



Coastal Group
5316 Hwy 290 W, Suite 150
Austin, Texas 78735
Tel. (512) 439-4700
Fax. (512) 439-4716

This product is for informational purposes and may not have been prepared for or be suitable for legal, engineering, or surveying purposes. It does not represent an on-the-ground survey and represents only the approximate relative location of property boundaries.