

**Special Session, July 28, 2011**

**BE IT REMEMBERED** that on **July 28, 2011**, there was begun and holden a Special Session of the Commissioners Court of Jefferson County, Texas, with the following members and officers present and participating except those absent as indicated:

Honorable Jeff Branick, County Judge

Commissioner Eddie Arnold, Commissioner Pct. No. 1

Commissioner Brent Weaver, Commissioner Pct. No. 2

Commissioner Michael Sinegal, Commissioner Pct. No. 3

Commissioner Everette D. Alfred, Commissioner Pct. No. 4

Honorable G. Mitch Woods, Sheriff

Honorable Carolyn L. Guidry, County Clerk -

when the following proceedings were had and orders made, to-wit:

-----



**NOTICE OF MEETING AND MINUTES  
OF COMMISSIONERS' COURT  
OF JEFFERSON COUNTY, TEXAS  
July 28, 2011**

Pursuant to Chapter 552 of the Texas Government Code, notice is hereby given that the Commissioners Court of Jefferson County, Texas will convene in special session on the 28<sup>th</sup> day of July 2011 at 10:00 a.m. in the Carl Parker Multipurpose Center at LSC-PA, 1800 Lakeshore Drive, Port Arthur, and at 1:15 p.m. at the Jefferson County Courthouse, 4<sup>th</sup> Floor, Commissioners Courtroom, 1149 Pearl Street, Beaumont, to receive public comment on redistricting of county election, justice of the peace and commissioners court precincts. Following the public hearings, the Commissioners Court will take up for consideration and possible action one or more alternative plans for the redistricting of County Commissioners Court precincts. The Court reserves the right to take any and all appropriate action regarding the redistricting of Jefferson County political boundaries, including the acceptance of new boundaries for the Commissioners Court precincts, modification of any boundaries, and/or tabling the pending proposals for later consideration and/or action.

The public is invited to attend and participate in these meetings. Those wishing to address the Court should sign a speakers request form provided for this purpose. Each speaker will be asked to come before the Court, to identify themselves, their address, and the Commissioners Court precinct and Election Precinct they reside within. Comments should be reasonably concise and to the point. Questions will be answered, but the Court will not permit argument or excessive discussion of any particular topic. The hearing will be conducted under rules of judicial decorum. A tape recording of the hearing will be made of this hearing. Your comments will be transcribed and included with the submission of the proposed changes to existing Commissioners Court precincts to the United States Department of Justice.

---

JEFF R. BRANICK  
County Judge

Clerk's Note: Presentation was given by attorney from Allison and Bass Law Firm on proposed redistricting plan to redraw Commissioners precinct lines. Stephen Mosely, Leon Wright, and several elected officials spoke during the public comment portion of the hearing.

**SEE ATTACHED PAGES FOR PROPOSED REDISTRICTING PLAN**

# Jefferson County, Texas

## Proposed Plan 2B

Statistical Measures of Population Equality  
Including Prison Population (County Population 252,273)

Commissioner Precinct	Actual Population	Ideal Population	Absolute Deviation	Relative Deviation
Precinct 1	64,080	63,068	1,012	1.60%
Precinct 2	61,377	63,068	-1,691	-2.68%
Precinct 3	63,139	63,068	71	0.11%
Precinct 4	63,677	63,068	609	0.97%
Total Population	252,273			

**Ideal Population** is defined as (total county population divided by 4). Absolute and Relative (%) Deviations are difference in actual and ideal.

**-1,691 to 1,012**      **Absolute Range** is the spread in absolute deviation from the smallest precinct to the largest.

**-2.68% to 1.60%**      **Relative Range** is the spread in relative deviation (%) from the smallest precinct to the largest.

**845.75**      **Absolute Mean Deviation** is the average deviation, which is calculated by adding all the absolute deviations (ignoring “+” and “-” signs) and dividing by 4.

**1.34%**      **Relative Mean Deviation** is the average deviation, which is calculated by adding all the relative deviations (ignoring “+” and “-” signs) and dividing by 4.

**515.97**      **Standard Deviation of Population** is the square root of the sum of the squares of all the absolute deviations divided by 4.

**0.82%**      **Standard Deviation of Relative Deviations** is the square root of the sum of the squares of all the relative (%) deviations divided by 4.

**5.36%**      **Total Absolute Deviation** is the sum of all relative deviations (ignoring “+” and “-” signs).

<b>4.29%</b>	<b>Total Maximum Deviation is the sum of the relative deviations (%) of the smallest and largest precincts, (ignoring “+” and “-” signs).</b>
--------------	---

# Jefferson County, Texas

## Proposed Plan 2B

Analysis of Population in Commissioner Precincts based on 2010 Census data  
Including Prison Population

### Ethnic Background of Total Population

	Anglo	Black	Amer. Indian	Asian	Hispanic	Hawaii/ Pac. Is.	Other	Multi Race	Prec. Total	% of County
Precinct 1	38,014	16,084	156	2,755	6,104	16	57	894	64,080	25.40%
Precinct 2	47,303	4,307	163	1,478	7,524	16	51	535	61,377	24.33%
Precinct 3	16,495	23,902	197	3,101	18,738	20	87	599	63,139	25.03%
Precinct 4	10,691	40,207	231	1,191	10,533	12	60	752	63,677	25.24%
County Total	112,503	84,500	747	8,525	42,899	64	255	2,780	252,273	100.00%
% of County	44.60%	33.50%	0.30%	3.38%	17.00%	0.03%	0.10%	1.10%	100.00%	

### Ethnic Background as a % of Total Population

	Anglo	Black	Amer. Ind.	Asian	Hispanic	Haw/Pac	Other	Multi	% Total
Precinct 1	59.32%	25.10%	0.24%	4.30%	9.53%	0.02%	0.09%	1.40%	100.00%
Precinct 2	77.07%	7.02%	0.27%	2.41%	12.26%	0.03%	0.08%	0.87%	100.00%
Precinct 3	26.12%	37.86%	0.31%	4.91%	29.68%	0.03%	0.14%	0.95%	100.00%
Precinct 4	16.79%	63.14%	0.36%	1.87%	16.54%	0.02%	0.09%	1.18%	100.00%

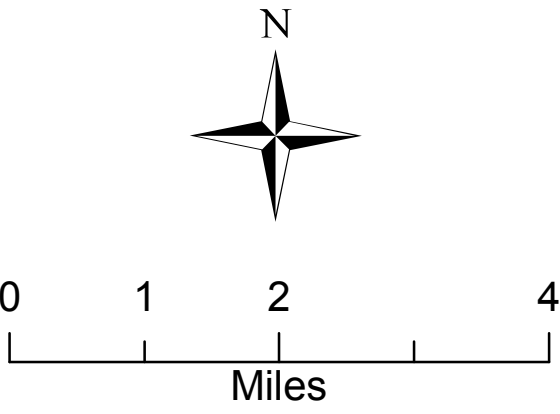
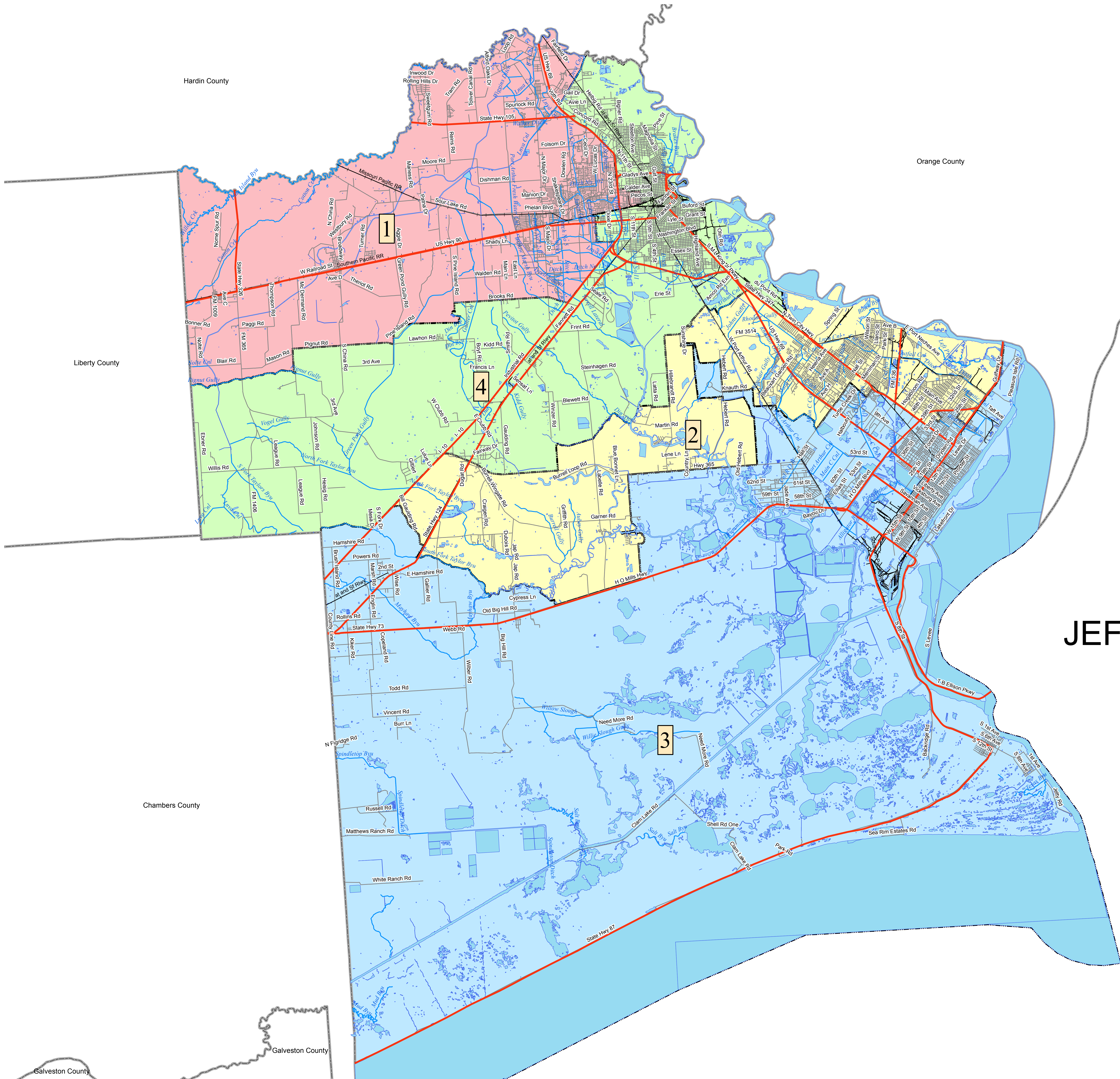
### Ethnic Background of Voting Age Population

	Anglo	Black	Amer. Indian	Asian	Hispanic	Hawaii/ Pac. Is.	Other	Multi Race	Prec. Total	% of County
Precinct 1	31,467	11,131	119	1,991	4,033	14	41	438	49,234	25.66%
Precinct 2	37,855	3,781	137	1,081	5,419	11	30	268	48,582	25.32%
Precinct 3	14,347	17,943	152	2,284	12,298	17	58	346	47,445	24.73%
Precinct 4	9,278	28,908	204	1,006	6,724	8	40	446	46,614	24.29%
County Total	92,947	61,763	612	6,362	28,474	50	169	1,498	191,875	100.00%
% of County	48.44%	32.19%	0.32%	3.32%	14.84%	0.03%	0.09%	0.78%	100.00%	

### Ethnic Background as a % of Voting Age Population

	Anglo	Black	Amer. Ind.	Asian	Hispanic	Haw/Pac	Other	Multi	% Total
Precinct 1	63.91%	22.61%	0.24%	4.04%	8.19%	0.03%	0.08%	0.89%	100.00%
Precinct 2	77.92%	7.78%	0.28%	2.23%	11.15%	0.02%	0.06%	0.55%	100.00%
Precinct 3	30.24%	37.82%	0.32%	4.81%	25.92%	0.04%	0.12%	0.73%	100.00%
Precinct 4	19.90%	62.02%	0.44%	2.16%	14.42%	0.02%	0.09%	0.96%	100.00%





# JEFFERSON COUNTY

Proposed Plan 2B  
Commissioner Precincts



**Special Session, July 28, 2011**

There being no further business to come before the Court at this time,  
same is now here adjourned on this date, July 28, 2011