

FROM
THE
LIBRARY OF

*Jefferson County
Historical Commission*

SOUTH COUNTY OFFICE BUILDING
"SUBCOURTHOUSE"

narrative to THC February 23, 1989

APPLICATION FORM FOR OFFICIAL TEXAS HISTORICAL MARKER

Texas Historical Commission
State Marker Program

P.O. Box 12276, Austin, Texas 78711

FILE COPY

Title of Marker (subject to revision by THC staff) ▶		South County Office Building "Sub-courthouse"		County ▶ JEFFERSON	
Marker Location (street address and town, or specific directions from nearest town on state highway map)		525 Lakeshore Drive, Port Arthur, Texas			
Distance and direction of subject from marker site ▶		to be placed near street (525 Lakeshore Drive) at the walk to entrance ca 75 feet from door		If not on post, type of surface to which marker ▶ will be attached (wood, stone, etc.)	
Owner of Marker Site ▶		Jefferson County <i>R. P. LeBlanc, Jr.</i> County Judge		Address 1149 Pearl City, Zip Beaumont, Texas 77701 (01)	
Sponsor of Marker ▶		<i>R. P. LeBlanc, Jr.</i> 1149 Pearl		City, Zip Beaumont, TX 77701	
Signature of County Chairman ▶		<i>Pat Gilbert</i> 630 Genoa		City, Zip Beaumont, TX 77705	
Person to whom marker is to be shipped*		Craig Stark, 525 Lakeshore Dr., Port Arthur Tx 77640		Address City, Zip Telephone (required) 409-983-8300	

*If marker is to be placed on highway right-of-way, it will be shipped to your district highway engineer.

Please consult the back of this page for specifications of the markers available. Check the items desired below. Approval of the application and narrative must be obtained from the county historical commission, as indicated by the county chairman's signature on this form, before forwarding the material to the Texas Historical Commission. Please do not send payment if ordering subject or building markers; funds will be requested once the application has been approved by the State Marker Committee. Sales tax must be added to the price, except if purchased by a tax-exempt organization. Applicants may order a marker with a socket to attach to their own post; however, the cost is the same as a marker furnished with a foundry post.

SUBJECT MARKERS

- 16" x 12" grave marker (comes with mounting bar) \$225
 - 27" x 42" subject marker with post \$650
 - 27" x 42" subject marker without post \$600
 - 18" x 28" subject marker with post \$375
 - 18" x 28" subject marker without post \$300
- (We) request that RTHL designation be considered for this structure.
(Please see signature line below.)

BUILDING MARKERS

- 16" x 12" building marker with post \$350
- 16" x 12" building marker without post \$300

Applications for building markers will automatically be considered for the RTHL designation. Please read carefully Texas Marker Policies 13 through 18, and indicate that you have done so by signing below.

Signature of owner
R. P. LeBlanc, Jr.

PAPERWEIGHTS

- Please indicate quantity desired.
- ___ 3" x 4" plastic paperweight
mounted with replica of marker \$90
*Allow two months from completion of marker
for receipt of paperweight.*
 - ___ Medallion paperweight \$40
Allows four lines of engraving; please indicate desired wording.

DIRECTIONAL SIGNS

- Please indicate quantity desired and give location(s) on form above:
- 24" x 24" Historical Markers In City sign \$80
*These will be shipped to and placed on your town's city
limits signs by the District Highway Engineer.*
 - ___ Black and White (for farm-to-market roads, state and U.S. highways)
 - ___ Green and White (for Interstate highways)
 - 18" x 22" Historical Marker directional sign \$80
*In black and white only. For city and county roads.
Applicant must supply post and be responsible for placement.*
 - ___ With arrow pointing straight ahead
 - ___ With arrow pointing left
 - ___ With arrow pointing right

OTHER

- National Register plaque \$ 50
- 12" x 6" supplemental plate \$110
- 16" x 12" building marker plate only
(see policy #15) \$190
- Replacement medallion (see policy #15) \$110
- Bronze stars (for replacement on 1936
granite markers) \$ 25
- Bronze wreaths (for replacement on
1936 granite markers) \$ 25
- Bronze seals (for replacement on
1936 granite markers) \$ 65
- Bronze plates (for replacement on
1936 granite markers) \$185
- Certificates of appreciation 50¢ each

JEFFERSON COUNTY, SOUTH COUNTY OFFICE BUILDING

"SUBCOURTHOUSE"

As the petro-chemical complex grew along the Sabine-Neches waterway, so did the population and resulting need for county services in the southern part of Jefferson county. The offices of county commissioners, precincts 2 and 3; justice of the peace, sheriff's office, etc., were scattered. The need for centralization became apparent and County Commissioner H.O. Mills¹ proposed a bill for the construction of a county office building to be erected in Port Arthur and used the term "subcourthouse"². The Court unanimously endorsed the proposed bill.

Rice M. Tilley, former assistant attorney general, was retained to draft a bill and prepare opinion as to its validity³. The bill was introduced by Representative Carl E. Nicholson⁴ and Representative J. R. McDougal⁵ and in the Senate by Senator W. R. Cousins⁶. It became law April 30, 1931⁷. A bond issue was called for August 1, 1931⁸ and passed 5582 to 612⁹.

The depression was at the worst and obstacles hampered the progress of the undertaking. It was found necessary to correct some defects in the bill. The amended bill was passed as House Bill 772 of the 43rd Legislature and signed by Governor Miriam Ferguson¹⁰. The sponsor had been Representative H.L. McKee¹¹.

The offer of the Plaza Hotel block in Port Arthur was accepted by Commissioners' Court¹². Fred C. Stone¹³ and C. L. Wignall¹⁴ were employed as architects¹⁵.

Application was made to the Public Works Administration for financial assistance¹⁶ and upon approval the project received docket number designation 2451¹⁷. Plans were filed with the Commissioners' Court¹⁸. The initial bids were rejected as

being too high¹⁹. Some changes were made in the plans and the contract let to L. W. Eaton of Baton Rouge, Louisiana for the construction of the building²⁰. The jail installation contract was awarded the Southern Prison Company of San Antonio at that time. The contract for the elevator was awarded the Montgomery Elevator Company of Hunter-Hayes Company, Dallas²¹.

The building was constructed of white Cordova limestone in the "American Design"²². The design is American Modern, i.e., Art Deco. Aluminum grill work is a feature in hallways and court rooms.

Resting on a reinforced concrete piling foundation, the edifice is a tall central structure of three stories, with adjoining wings of two stories, each.

Originally the first floor housed the offices of the commissioners, collector/assessor, county clerk, health department, assistant county attorney, deputy sheriff, deputy county engineer and the building superintendent. On the second floor were two justices' rooms, a jury room, offices for a justice and clerk, constable's office and an assembly room seating 250 person²³. The jail occupies the third floor of the central structure.

The contract for the ornamentation in plaster was awarded the Southern Plastic Relief Company of Dallas²⁴. On the exterior east and west faces of the center structure stylized eagles cap the columns. Across the top are medallions representing (left to right) scales of justice, a sailing vessel, and centered, Moses and the tablets of the 10 Commandments, alternating with medallions of stylized flower, and repeated, sailing vessel and scales of justice. Window occupy the north and south faces of the central section.

The contract for special lighting fixtures was awarded Benson & Brothers of Kansas City²⁵. From the bid application, the special lighting fixtures were described as:

"Entrance Lobby, 3 special 16 light recessed ceiling satined aluminum finish flashed Opal glass soffit panels, recessed portion made of 16 ga. steel surface frames of 1/4 x 1 x 5/8 extruded alumina angles arranged with piano hinges and latch interior arranged with porcelain receptacles staggered as directed, recessed portion made with openings to provide ventilation.

"Front entrance 3 special 5 lt. recessed ceiling satined aluminum finish flashed Opal glass soffit panels equiped with MacBeth Prismatic glass square grid lenses equipt with 200 watt Pittsburg silver reflectors surface frame of 1/4 x 1 x 5/8 extruded aluminum angles recessed portion made of 16 ga. steel.

"Side and rear entrance special 2 light lantern bracket polished and satined alumina finish Opal glass cylinders, metal parts of cast and extruded aluminum, weatherproof porcelain sockets."

The contract for paving the site was awarded O. W. Collins of Port Arthur and the landscaping was done by Griffin Nursery²⁶.

Construction began August 10, 1935 and the cornerstone laid July 24, 1936. The dedication ceremony was held at 7 o'clock August 28, 1936²⁷ with County Judge B. B. Johnson officiating.

The building was air conditioned by the Evans Refrigeration Company in 1957²⁸. Five condensers were placed on the roof, three units on the north side, and two units on the west side. Four condensers were placed on the ground. Blowers were placed in the plumbing case under the building and in the plumbing case between second and third floors. No major changes were made at the time. J. E. Neff was the architect.

As the population of the south county increased, it became apparent that modifications were needed. The Jefferson County Historical Commission worked with the architect firm of Moore, Stansbury and Vaught to retain the open lobby and characteristics of the building while making a one story addition.²⁹ The addition was to be simple in design, complementary to the original structure. It was to be constructed of Texas cream limestone, quarried by Texas Quarries Division of the Featherlite Corporation, Austin³⁰.

The original entrance on the north side was adapted to provide access to the annex by a short corridor. The original lights and door were removed, and used on the new building. One window was eliminated. No other changes were made to the exterior of the original structure.

The tax office had been re-located to the second floor, south wing.* The courtrooms had been side-by-side on the north wing. One was removed to the south wing. The original furnishings³¹ were then transferred from the northwest courtroom and is now occupied by Justice of the Peace, Precinct 2, Place 1. The northeast courtroom remains intact for Justice of the Peace Precinct 2, Place 2. Separate office space was provided the Justice. The original windows had been hand-cranked. These have been replaced with new energy conservation, aluminum, double-pane windows. Vinyl wall covering has been installed in some areas. The original interior doors were removed and placed in storage, at the architects recommendation. A new hydrolic elevator was installed.

The annex and the modifications in the original structure were completed and the annex dedicated July 14, 1979.³²

* The tax office was transferred to the annex.

Jefferson County, South County Office Building

4.

As the population of the south county increased, it became apparent that modifications were needed. The Jefferson County Historical Commission worked with the architect firm of Moore, Stansbury and Vaughn to retain the open lobby and characteristics of the building while making a one story addition.²⁹ The addition was to be simple in design, complementary to the original structure. It was to be constructed of Texas cream limestone, quarried by Texas Quarries Division of the Featherlite Corporation, Austin³⁰.

The original entrance on the north side was adapted to provide access to the annex by a short corridor. The original lights and door were removed, and used on the new building. One window was eliminated. No other changes were made to the exterior of the original structure.

The tax office had been re-located to the second floor, south wing. The courtrooms had been side-by-side on the north wing. One was removed to the south wing. The original furnishings³¹ were then transferred from the northwest courtroom and is now occupied by Justice of the Peace, Precinct 2, Place 1. The northeast courtroom remains intact for Justice of the Peace Precinct 2, Place 2. Separate office space was provided the Justice. The original windows had been hand-cranked. These have been replaced with new energy conservation, aluminum, double-pane windows. Vinyl wall covering has been installed in some areas. The original interior doors were removed and placed in storage, at the architects recommendation. A new hydraulic elevator was installed.

The annex and the modifications in the original structure were completed and the annex dedicated July 14, 1979.³²

Heavy rains in early 1987 resulted in damage to the ceiling of the second floor rooms. Excepting over the foyer, the old plaster was removed and drop ceilings of accustical tile installed. Seepage to the first floor damaged that ceiling. It was covered with a drop ceiling of accustical tile³³.

The foyer is the site of a mini-museum with cases displaying artifacts of the area, and items retired from use in the building. Photographs of past Commissioners for Precincts 2 and 3 are displayed.

The original lights are in the foyer and at the east and west entrances.

Commissioner Dave Smith, Jr., of Precinct 3 and the Building Superintendent, Craige Stark, are very proud of the structure and have given it excellent care.

The Jefferson County office building in Port Arthur is the first such subsidiary building in Texas to house representation from all the major service branches of county government, under one roof.

Located at 525 Lakeshore Drive, Port Arthur, the "Subcourthouse" overlooks the Sabine-Neches Canal/Intracoastal Waterway.³⁴

Mildred S. Wright
researcher

Footnotes:

1. Henry Ozella Mills died June 12, 1958, age 67, Death records, Jefferson county
2. Jefferson County Commissioners' Court Minutes, Book 12, page 630, March 9, 1931, hereafter "Minutes"
3. Minutes, Book 12, page 333, March 15, 1931
4. Carl E. Nicholson, Dist. 16, Place 2 of Port Neches, TEXAN WHO'S WHO, Vol. I, editor Sam Acheson, 1937: Carl E. Nicholson 1888-1964 JEFFERSON COUNTY, TEXAS CEMETERIES, Part 1, Oak Bluff Memorial Park, Port Neches, compiled by Mildred S. Wright (c) 1979
5. James R. McDougal, died July 26, 1966, age 70, Jefferson county Death Records; obituary Beaumont Enterprise, July 27, 1966 1:4
6. W. R. Cousins, Sr., Senator 4th District, obituary, Beaumont Enterprise, September 1, 1975 6B:3 age 94
7. THE LAWS OF TEXAS, Arranged by H.P.N.Gammel, Supplement Volume To The Original Ten Volumes, Gammel's Book Store, Austin, Texas, Vol. 27, Forty-second Legislature, Regular Session, page 810-811, H. B. No. 884, Chapter 333 "An Act authorizing counties having a city or cities other than county seats within their boundaries, having a population of twenty thousand (20,000) and over, to provide, maintain, and repair office buildings and/or jails in said cities; providing generally the manner and thereof, and placing limitations thereon; providing the Commissioners Court may authorize the maintenance of branch offices for county officers in said cities, in the manner now provided by law, and that it may sit in said city in certain cases; providing limitations on the cost thereof; and declaring an emergency" (preamble to law - MSW) Effective April 30, 1931, H.B. No 884 passed the House by vote of 104 yeas, 4 nays; passed the Senate by a vote of 28 yeas, 0 nays. hereafter LAWS
8. Minutes, Book 13, page 175, June 29, 1941
9. ibid, page 239, August 31, 1931
10. LAWS OF TEXAS, Vol. 28, Forty-third Legislature, Regular Session, page 101-102, H. B. 772, Chapter 49, "Validating Certain County Bonds"
11. H. L. McKee, Dist. 16, Place 1 of Port Arthur, TEXAN WHO'S WHO, Vol. I, Death Records of Jefferson County, died September 6, 1954, age 70 years, 9 months, 2 days
12. Minutes, Book 14, page 547, Ausut 23, 1933 located in the Joseph Butler League, Jefferson County Deed Records, Abstract 12 of the General Land Office; Jefferson County Deed Records:
Book L, page 140, September 16, 1840 Joseph Butler of Shelby County to E.H. Johnson;

12 - continu ed:

Deed Book P, page 505, December 5, 1871, E. D. Johnson
by Marshal to Samuel Lee

DeedBook Y, page 337, September 28, 1886, Samuel Lee
and wife, Elizabeth, to Beaumont Pasutre Company, Wm.
McFadden et al

Deed Book Vol. 11, pages 177-181, October 15, 1895
Wm. Fadden et al to Edward Bates, Port Arthur Town-
site Company

Deed Book Vol. 111, page 45, March 26, 1908 Jan Van Tyen
et al, as trustees of Port Arthur Townsite Company to
Port Arthur Hotel Company

Deed Vol. 396, page 365, March 11, 1935, G. P. Williams
acting as Receiver for Port Arthur Hotel Company to
Jefferson County

13. Fred Stone, 1896-1966, Lot 78, Sec. P, Magnolia Cemetery
Beaumont; obituary Beaumont Enterprise, April 2, 1966 1;6
14. C. L. Wignall, death date February 10, 1953
15. Minutes, Book 14, page 560, August 23, 1933
16. ibid, page 606, September 5, 1933
17. Minutes, Book 15, page 298, May 10, 1934
18. ibid, page 201-202, February 19, 1934
19. ibid, page 613, November 23, 1934
20. Minutes, Book 16, page 325, May 27, 1935
21. ibid
22. PORT ARTHUR, compiled and written by the Writers Program
of the Work Projects Administration in the State of
Texas, 1940, page 125, hereafter PORT ARTHUR, W.P.A.
23. The Port Arthur News, August 26, 1936, 8:1
24. Minutes, Book 17, page 302, June 8, 1936
25. Minutes, Book 16, page 585, November 14, 1935
26. Minutes, book 17, page 576, December 7, 1936
27. The Port Arthur News, August 28, 1936, page 1
28. Minutes, Book 47, page 642 April 29, 1957; Book 51, page
467 September 15, 1958
29. Minutes, Book 91, page 205, December 17, 1979 also:
Mrs. W. F. Fredeman, president, Port Arthur Historical
Society to Commissioner Dave Smith, Jr., December 26,
1979; Mrs. Benckenstein to Commisisoner Dave Smith, Jr.
December 31, 1979, Mr. Lee Moore of Moore, Stansbury
and Vaughn to Mrs. Fredeman, Mrs. Benckenstein,
Commissioner Smith and County Judge LeBlanc, December
28, 1979, correspondence in file of Jefferson County
Historical Commission, Courthouse, Beaumont

Jefferson County, South County Office Building "Subcourthouse"
8.

30. PORT ARTHUR, W.P.A. page 125
31. see photographs attached
32. Beaumnt Enterprise, July 14, 1979 1A:4 also 3:A
33. Minutes, Book 205, page 2 May 11, 1987
34. U.S.Geological Survey map, Port Arthur South Quadrangle,
33⁰⁴⁺ north 4¹⁰ - E

Attached:

Xerox from LAWS OF TEXAS, Vol. 27 810-811; Vol. 28. 101-102

Photographs attached include :

2 views taken about the time of the dedication of the original
structure B&W

2 views taken prior to annex color

views taken 1988 of features of the building B&W

U.S.Geological Survey map, portion reduced

Mildred S. Wright

vol. 24

THE
LAWS OF TEXAS

SUPPLEMENT VOLUME
TO THE
ORIGINAL TEN VOLUMES
1822-1897

ARRANGED BY
H. P. N. GAMMEL

AUSTIN, TEXAS
GAMMEL'S BOOK STORE

GENERAL LAWS.

pending, and this Act shall take effect and be in force from and after its passage, and it is so enacted.

Approved April 30, 1931.
Effective April 30, 1931.

[NOTE: H. B. No. 795. passed the House by a vote of 104 yeas, 2 nays; passed the Senate by a vote of 22 yeas, 0 nays.]

AUTHORIZING ERECTION AND MAINTENANCE OF OFFICE BUILDINGS BY CERTAIN COUNTIES.

H. B. No. 884.] CHAPTER 333.

An Act authorizing counties having a city or cities other than the county seat within their boundaries, having a population of twenty thousand (20,000) and over, to provide, maintain, and repair office buildings and/or jails in said cities; providing generally the manner and cost thereof, and placing limitations thereon; providing the Commissioners' Court may authorize the maintenance of branch offices for the same; providing that the County Court may sit in said cities, in the manner now provided by law, and that it may sit in said city in certain cases; providing limitations on the cost thereof; and declaring an emergency.

Be it enacted by the Legislature of the State of Texas:

SECTION 1. In all counties having a city or cities other than the county seat within their boundaries, of a population of twenty thousand (20,000) and over, according to the last general Census, the Commissioners' Court of each said county shall have the power and authority to provide, maintain, and repair an office building and/or jail in the same manner as said Commissioners' Court may now provide for and maintain a house and jail at the county seat, and upon the acquisition and construction of such office building, the Commissioners' Court may authorize in the same manner as authorized by Article 1605, the maintaining of branch offices in each of said counties, except the District Clerk, County and District Judges; providing that the County Clerk shall not keep any part of his records relating to real and/or personal property except at the county seat; provided, further, that all officers shall keep all records at the county seat, and deputies may be provided at the county seat as authorized by Article 1605. The Commissioners' Court shall have the power to place such limitations as it may see fit on the authorization and maintaining of branch offices, and it may hold meetings in said office building, and may sit there as a court of Equalization on certain days for the equaling of value of property situated in said section of the county.

SEC. 2. Said office building and sub-jail may be provided, maintained, and repaired by the issuance of bonds as authorized by Chapter 2, Title 22, Revised Civil Statutes of 1925 or in any other manner, and it may be maintained and repaired by evidences of indebtedness.

in the same manner as courthouses and jails at the county seats, and may be levied therefor in the same manner and subject to the same limitations as for courthouses and jails at the county seats; provided, however, that no such office building shall cost more than One Hundred Fifty Thousand (\$150,000.00).

The fact that there are now several cities, and will be in the future, which are as large as the county seat and are at a distance of over ten (10) miles from the county seat, which creates undue hardship and burden on the residents of such counties, and the licensing of automobiles, rendering of property for the licensing of automobiles, rendering of property for securing marriage licenses, and the further fact that the expense is incurred now by said counties in the maintaining of branch offices, by renting of space for same, and in paying salaries for the feeding and caring for county prisoners, and that such amount could be set aside each month for interest on a sinking fund, to pay for an office building, creates an emergency and an imperative public necessity that the Constitutional provisions requiring bills to be read on three several days in each session be suspended, and the same is hereby suspended, and that this Act shall take effect and be in force from and after its passage, and it is so enacted.

Approved April 30, 1931.
Effective April 30, 1931.

H. B. No. 884 passed the House with engrossed by a vote of 104 yeas, 4 nays; passed the Senate by a vote of 28 yeas, 0 nays.]

Vol 28

Vol. 28

GENERAL LAWS
OF
THE STATE OF TEXAS

PASSED BY THE
FORTY-THIRD LEGISLATURE

AT THE
REGULAR SESSION

CONVENED AT THE
CITY OF AUSTIN, JANUARY 10, 1933

AND
ADJOURNED JUNE 1, 1933

PRINTED UNDER THE AUTHORITY OF
THE STATE OF TEXAS



HON. W. W. HEATH, Secretary of State

AMENDING ARTICLE 2774a, R. C. S., RELATIVE TO
INDEPENDENT SCHOOL DISTRICTS IN
CERTAIN CITIES.

H. B. No. 632.] CHAPTER 48.

An Act amending Acts of 1930, 5th Called Session, 41st Texas, page 212, Chapter 66; otherwise identified in Revised Civil Statutes of 1925, by exempting certain cities from the provisions thereof until the people residing therein, avail themselves of the provisions thereof by vote of the qualified voters thereof; repealing all laws and ordinances in conflict herewith and declaring an emergency.

Be it enacted by the Legislature of the State of Texas:

SECTION 1. That Article 2774a, 1925, Revised Civil Statutes of the State of Texas, and being that certain Acts of the 41st Legislature of the State of Texas, Acts of the 5th Called Session, page 212, Chapter 66 thereof, be amended is hereby amended by adding immediately after Section 1 thereof, the following:

"Provided, that in towns and cities of this State having a population of not more than twenty-five thousand (25,000) and not less than twenty-two thousand (22,000) according to the last preceding Federal Census, and constituting an independent school district and having control of the public schools by virtue of the provisions of any special charter granted by the Legislature of this State, the people residing in such cities and towns shall have and retain the right of referendum to determine whether or not said cities and towns shall be affected by the provisions of this Act, and such referendum to be initiated by petition of at least twenty-five per cent (25%) of the qualified voters residing in such cities and towns affected."

SEC. 2. All laws and parts of laws which conflict herewith are hereby expressly repealed and the cities and towns affected hereby, which may be operating under a city charter, the provisions of said charter or ordinance in reference to the control of such public schools may be amended until the election under referendum provided for herein shall have been had and carried.

SEC. 3. The fact that the cities and towns affected hereby are required to hold two elections, one for the election of Mayor and other City Officials, on the first Tuesday after the first Monday in April, and the other for the election of school trustees on the first Saturday in April, and the confusion arising from the provisions of the above entitled Act with the city charter or ordinance of the various towns and cities affected hereby, create a public emergency and an imperative public necessity that the constitutional Rule requiring bills to be read on three several readings and the same is hereby suspended, and that this Act

shall be in force from and after its passage, and it is so

H. B. No. 632 passed the House by a vote of 123 yeas, 0 nays; passed the Senate by a vote of 28 yeas, 0 nays.]

Approved March 24, 1933.
Approved March 24, 1933.

VALIDATING CERTAIN COUNTY BONDS.

H. B. No. 772.] CHAPTER 49.

An Act validating all proceedings and acts of the Commission-ers of such counties in elections held for the purpose of authoriz-ing the erection of an office building and/or jail; validating all bonds, authorized and/or issued, validating all tax levies made in behalf of such counties; and declaring an emergency.

Be it enacted by the Legislature of the State of Texas:

SECTION 1. That Chapter 333, Acts of the Regular Session of the 41st Legislature, be amended so as to hereafter read as follows:

SECTION 1. In all counties having a city or cities other than the county seat within their boundaries, of a population of not less than twenty thousand (20,000) and over, according to the last Federal Census, the Commissioners Court of each said county shall have the power and authority to provide, maintain, and construct an office building and/or jail in the same manner as the Commissioners Court may now provide for and maintain an office building and jail at the county seat, and upon the acquisition and construction of such office building, the Commissioners Court may authorize, in the same manner as authorized by the Acts of the 41st Legislature, the maintaining of branch offices in each of said counties, except the District Clerk, County and District Judges, County Clerk, and County Treasurer, provided that all officers and employees shall have the care and custody of such buildings and offices and shall have the care and custody of such buildings and offices subject to such limitations as it may see fit on the authority of the Commissioners Court.

Said office building and/or jail may be provided for and repaired by the issuance of bonds as is provided in Chapters 1 and 2, Title 22, Revised Civil Statutes, and all amendments thereto, or to provide, maintain, and construct the same through the issuance of evidences of indebtedness in the same manner as courthouses and jails at the county seat, and the taxes may be levied therefor in the same manner

and subject to the same limitations as for courthouses at the county seat; provided, however, that no such office building and/or jail shall cost more than One Hundred Fifty thousand Dollars (\$150,000.00).

"Sec. 3. All acts of the Commissioners Court in any county ordering an election or elections on the question of issuance of bonds for the purpose of purchasing and erecting and equipping an office building for county and a jail in any city other than the county seat of such county, and declaring the result of such election or elections, in taxes therefor, and all bonds issued and now outstanding, all bonds heretofore voted for such purpose but not yet are in all things confirmed, approved and validated. It is that by inadvertence or oversight any act of the Commissioners Court or other county official was omitted in ordering an election or elections, or in declaring the result thereof, or in the tax for such bonds, shall in no way invalidate any proceedings or any bonds heretofore issued or that have been voted for but not yet issued, but the same shall be deemed valid."

SEC. 2. The fact that the legality of bonds heretofore for the purposes herein set out has been questioned, or questioned, creates an emergency and an imperative necessity that the Constitutional Rule requiring bills to be on three several days in each House, be suspended, and this Rule is hereby suspended, and that this Act take effect in force and effect from and after its passage, and is enacted.

[NOTE.—H. B. No. 772 passed the House by a vote of 29 yeas, 0 nays; passed the Senate by a vote of 29 yeas, 0 nays; passed the Senate by a vote of 29 yeas, 0 nays.]

Approved March 24, 1933.
Effective March 24, 1933.

APPROPRIATION TO PAY PRESIDENTIAL-ELECTORS OF TEXAS.

S. B. No. 16.]

CHAPTER 50.

An Act making appropriation to pay the Presidential-electors providing how it shall be made, and declaring an emergency.

Be it enacted by the Legislature of the State of Texas:

SECTION 1. That the sum of Fifteen Hundred Dollars or so much thereof as may be necessary, is appropriated out of the general revenue, not otherwise appropriated, to pay the mileage and per diem of the Presidential-electors of Texas.

that the certificate of the secretary or chairman of the college, stating the number of days that the college session, and the names and addresses of the twenty-five electors present and participating, shall be sufficient for the Comptroller of Public Accounts of the State of Texas to draw warrants upon the State Treasurer for the amount of each elector covering the per diem and mileage. Whereas, the Presidential-electors have performed their duty as required by law, public policy demands that they be relieved therefor, an emergency and an imperative public policy exist that the Constitutional Rule be suspended and is hereby suspended, and this Act shall take effect and be in force from and after its passage, and it is so enacted.

S. B. No. 16 passed the Senate by a vote of 28 yeas, 0 nays; passed the House by a vote of 106 yeas, 0 nays.]

March 24, 1933.
March 24, 1933.

ISSUANCE OF WARRANTS FOR UNITED STATES POSTAGE STAMPS.

CHAPTER 51.

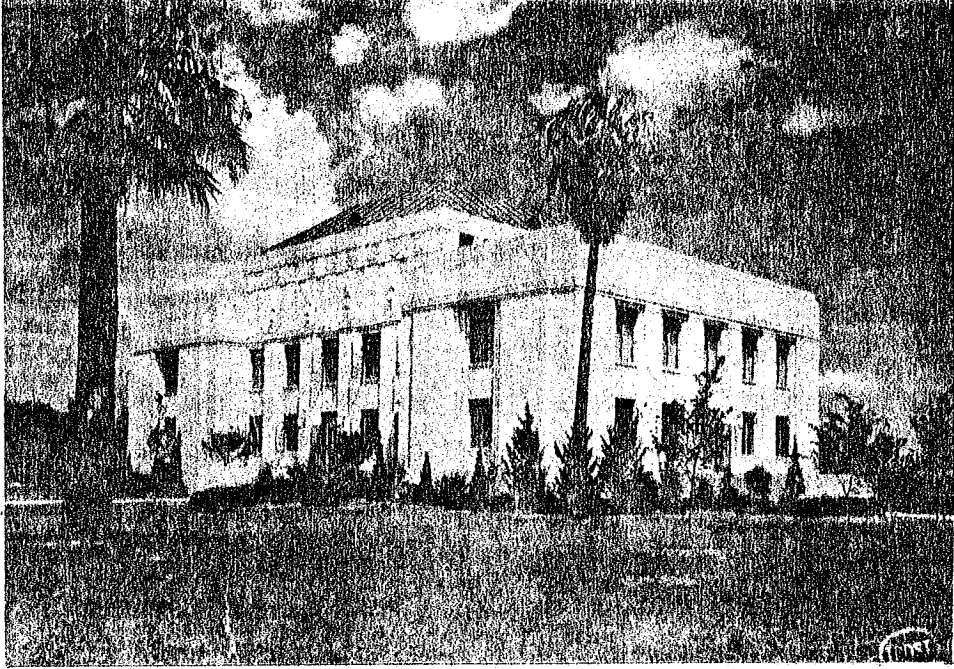
That Chapter 3 of Title 70 of the Revised Civil Statutes, 1925; providing for the issuance of warrants for United States postage stamps to be made by the postmaster of the State government, and for the payment of postoffice box rents by same; and providing for the payment of the same, irrespective of the serial number thereof or the priority of the same, is hereby amended, and the priority of the same is hereby declared an emergency.

Be it enacted by the Legislature of the State of Texas:

That Chapter 3 of Title 70 of the Revised Civil Statutes, 1925, be and the same is hereby amended by adding thereto a new Article to be known as Article 4386a, which shall read as follows:

Warrants for the purchase of United States postage stamps and for the payment of postoffice box rents by the department of the State government shall be made by the State Treasurer by the State Comptroller in the United States Postoffice; and the State Treasurer shall so issued out of any funds appropriated for the purchase of United States postage stamps, irrespective of the serial number of said warrants, and the priority of the issuance of said warrants, shall be endorsed by the Postmaster of the United States Postoffice to which they are made payable.

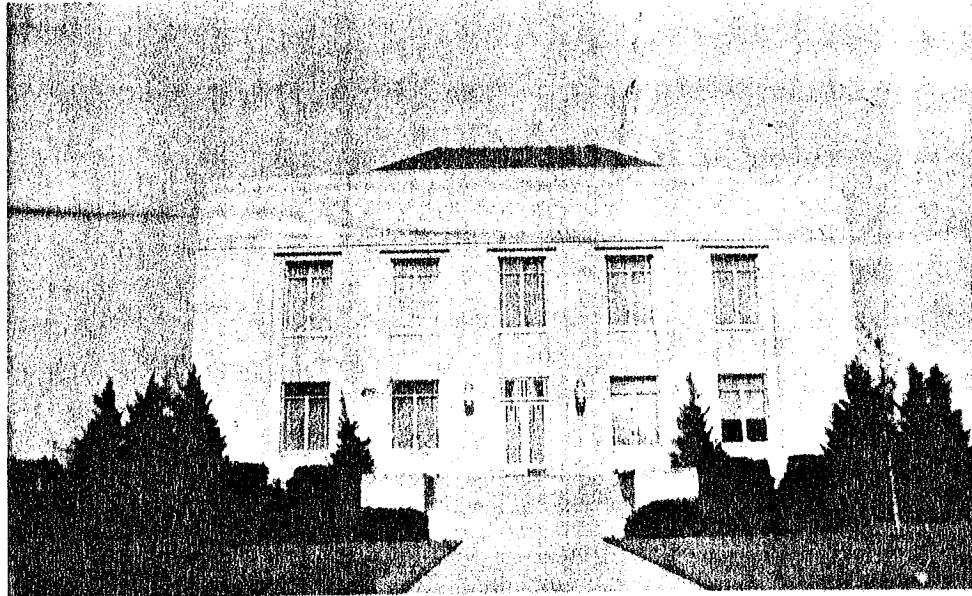
That the fact that the State government is on a deficiency during a considerable portion of the year, and the fact that postage stamps cannot be purchased from United States Postoffices



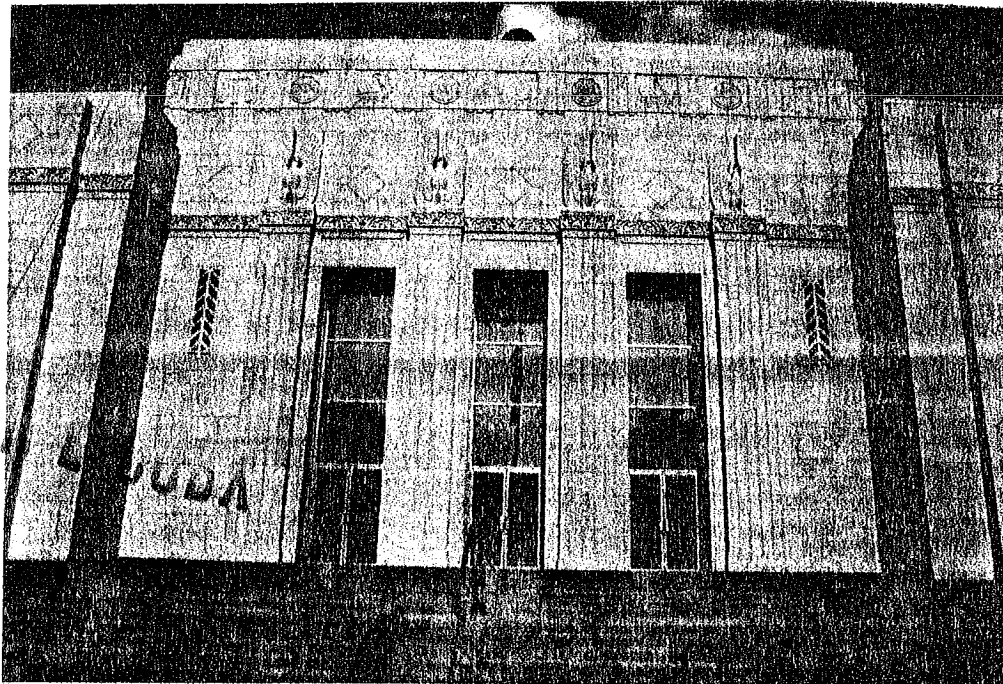
1. Trost Photograph
ca 1936

Entrance

SW corner



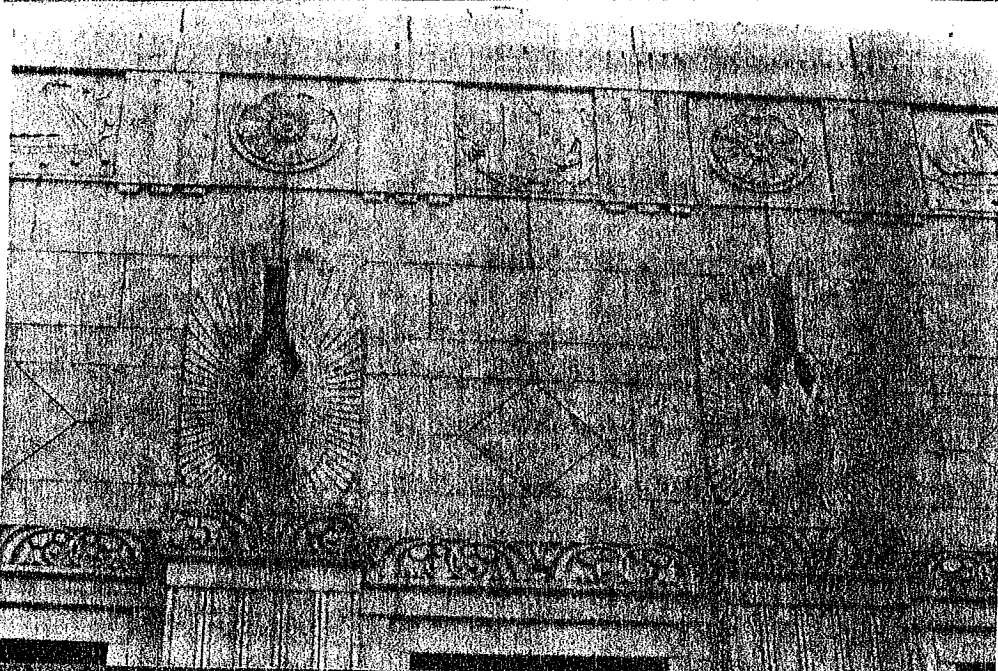
2. Entrance
(south)
ca 1936



3. Detail of
bas relief,
Entrance
Lakeshore Drive



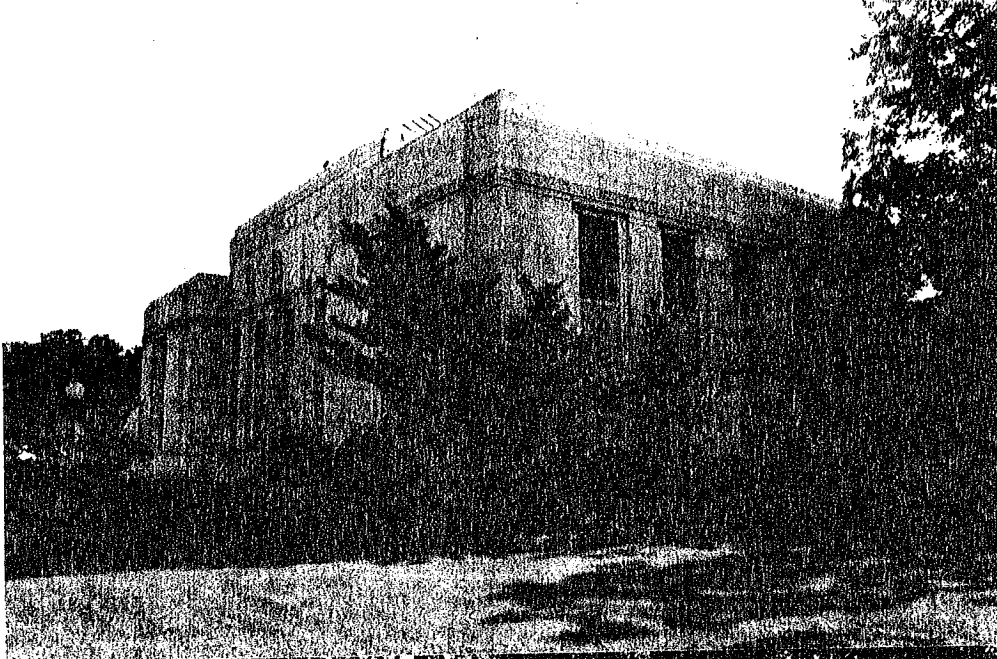
4. bas relief
west side



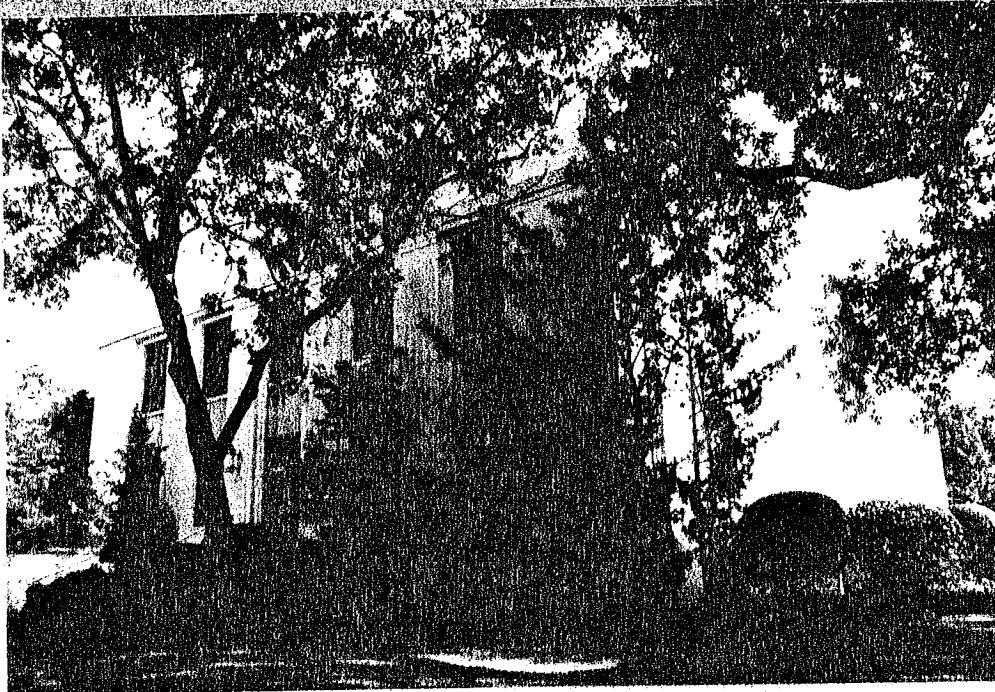
5. close-up of
relief



6. Lakeshore Dr.,
from NE corner



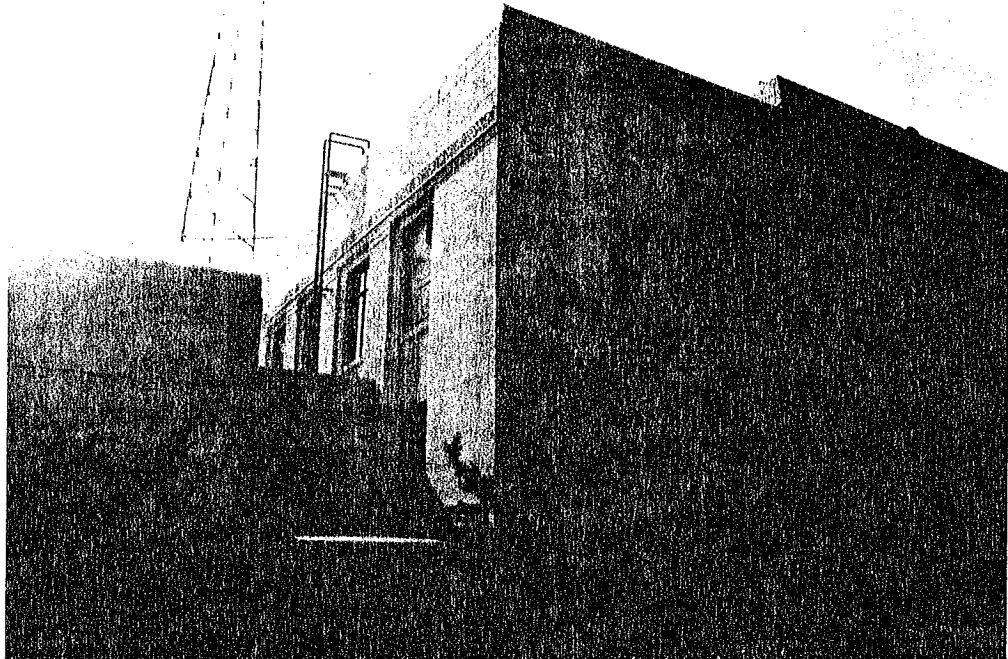
7. Lakeshore Dr.
SW corner



8. South
Entrance



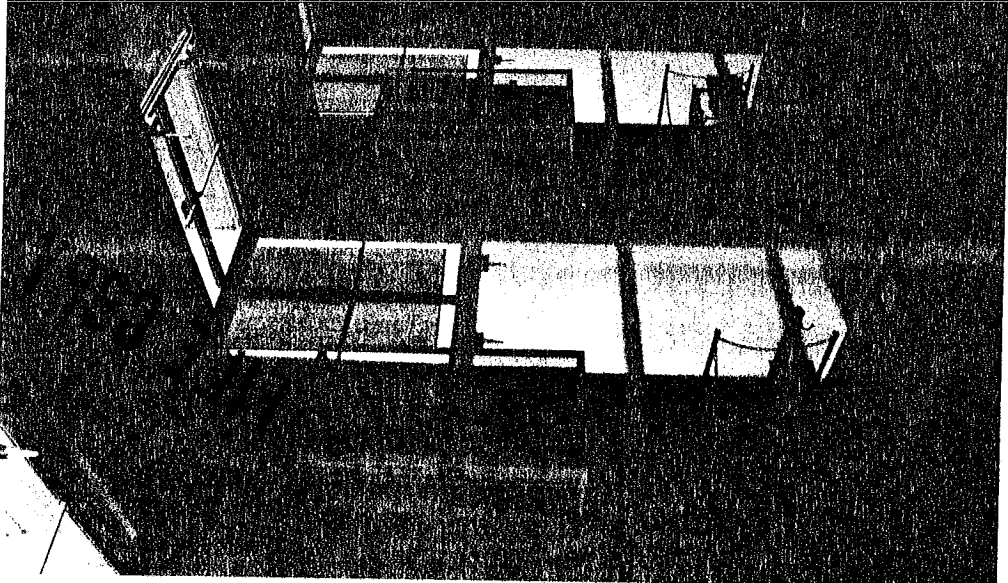
9. West
entrance,
from NW corner



10. West side
connecting annex



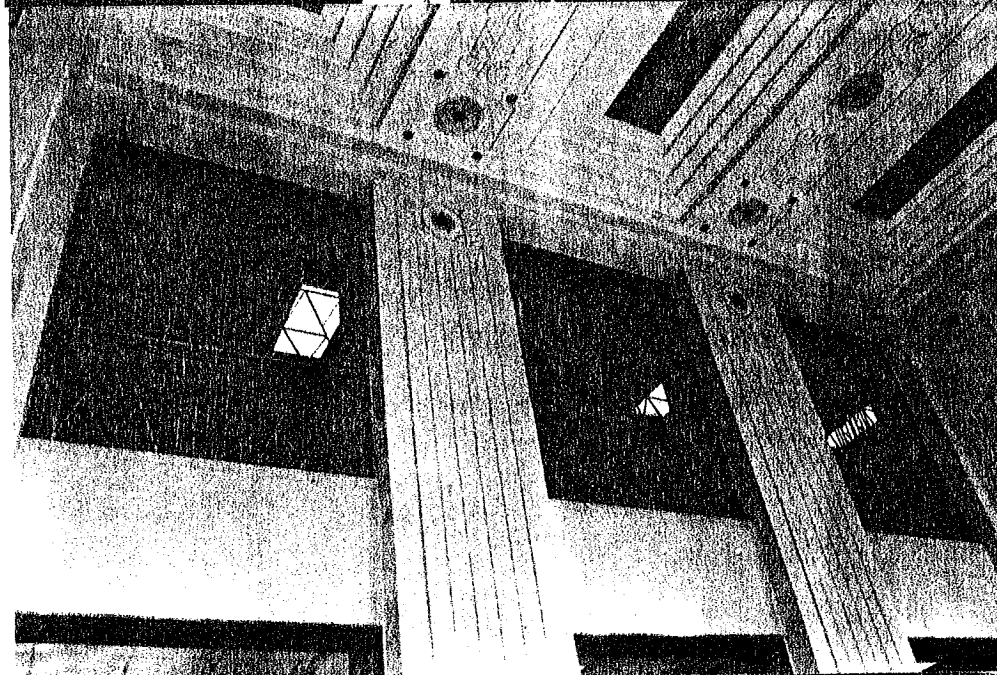
11. Corridor
connecting annex



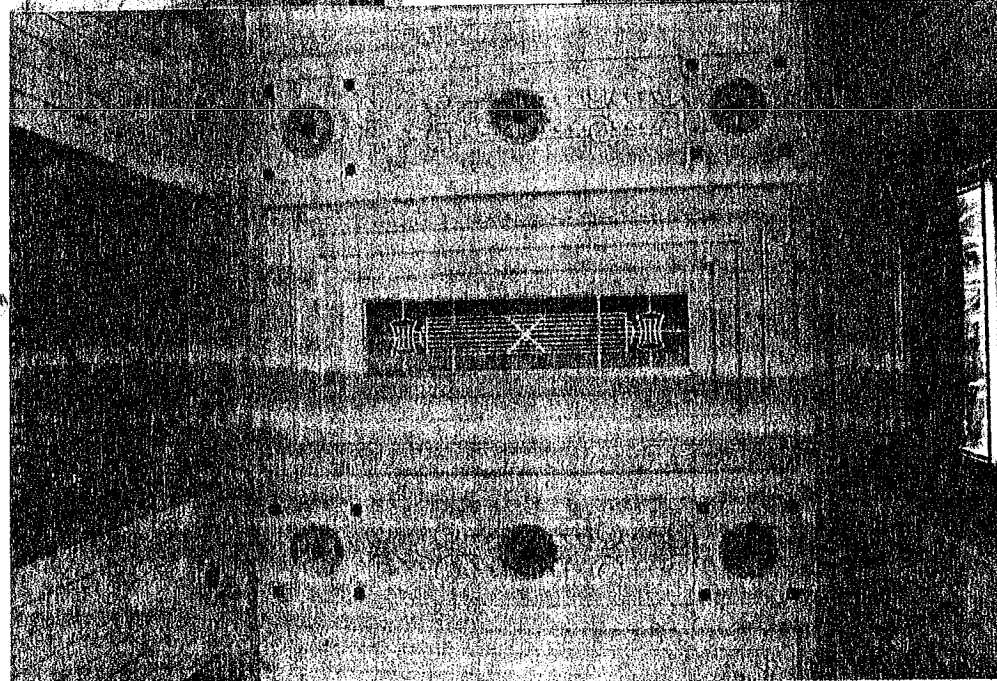
12. Looking
down on foyer
with museum
cases in view



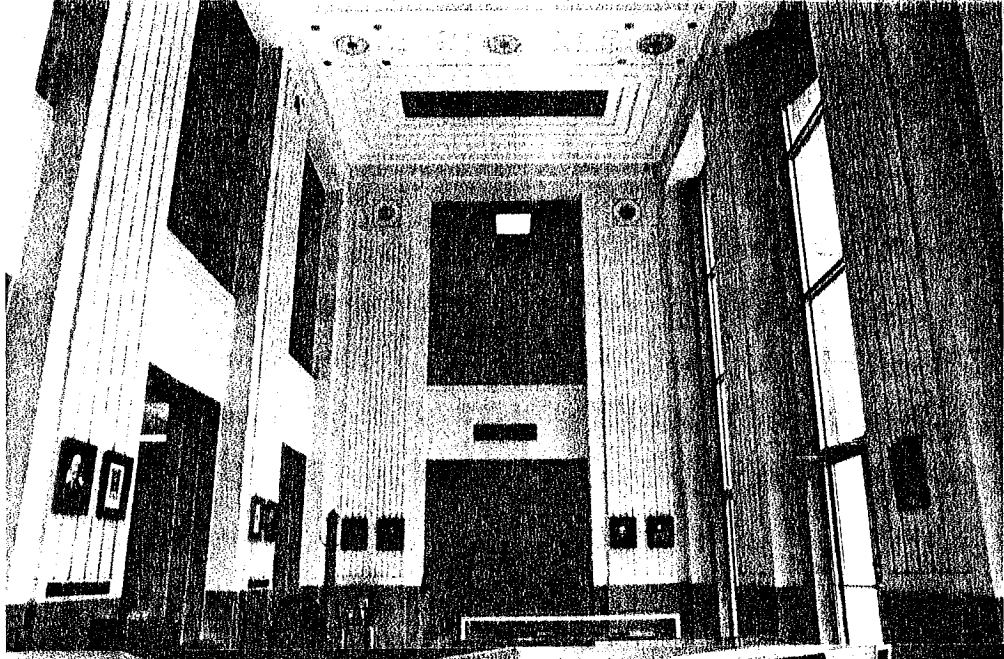
13. Detail
of ceiling in
foyer



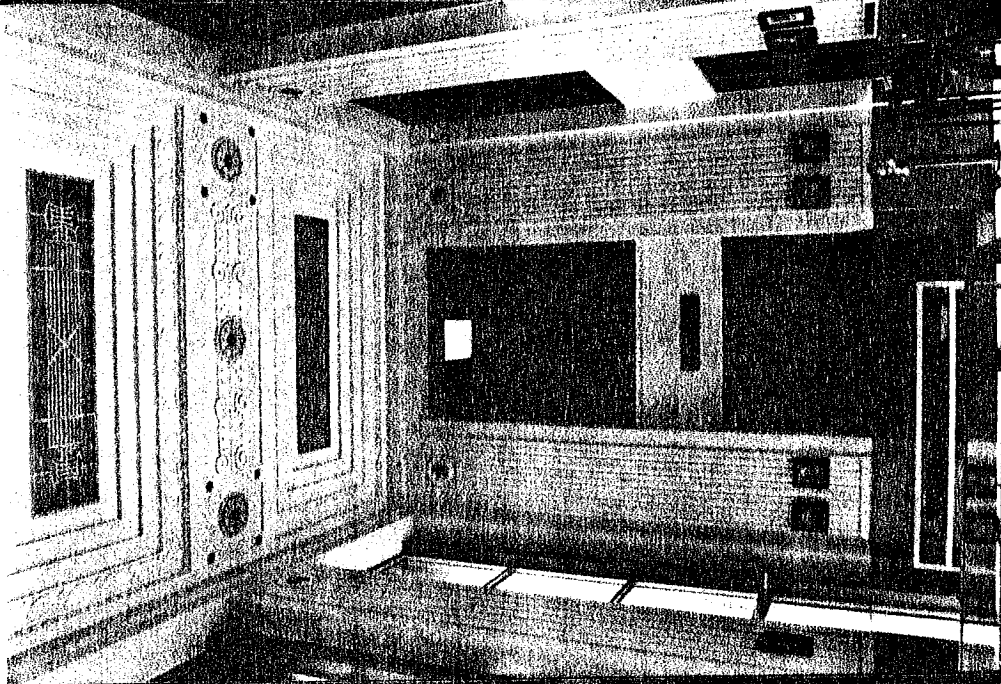
14. Detail of
ceiling in foyer,
with grillwork
on 2nd floor



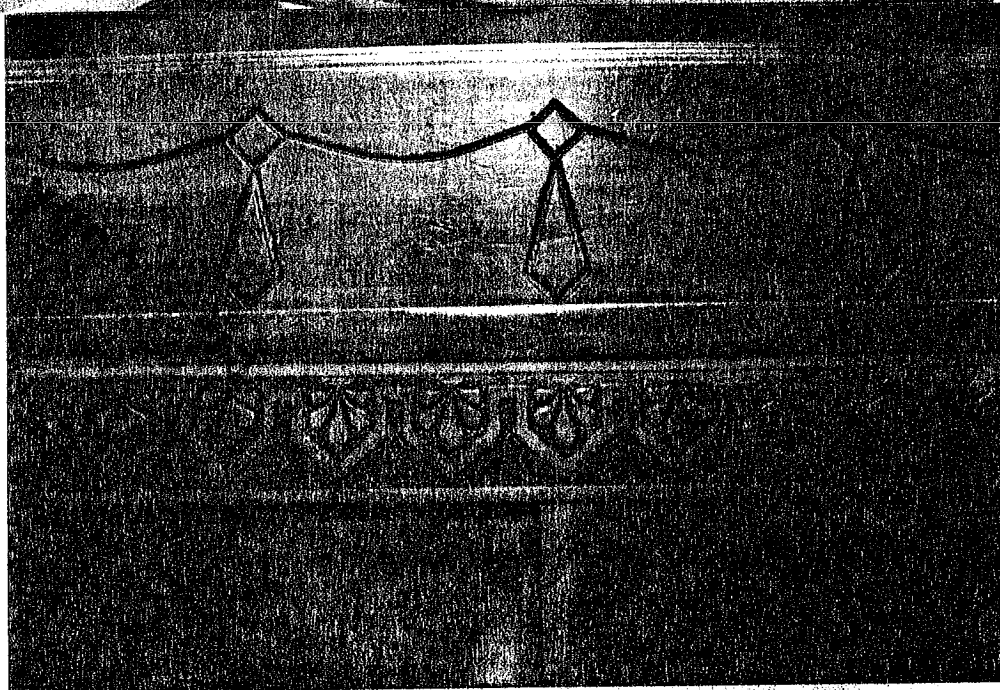
15. Another view
of ceiling in
foyer



16. Looking
north across
foyer



17. Looking
south across
foyer
(picture turned)



18. Detail of
bench, Prtc. 2,
Pl. 1, court-
room



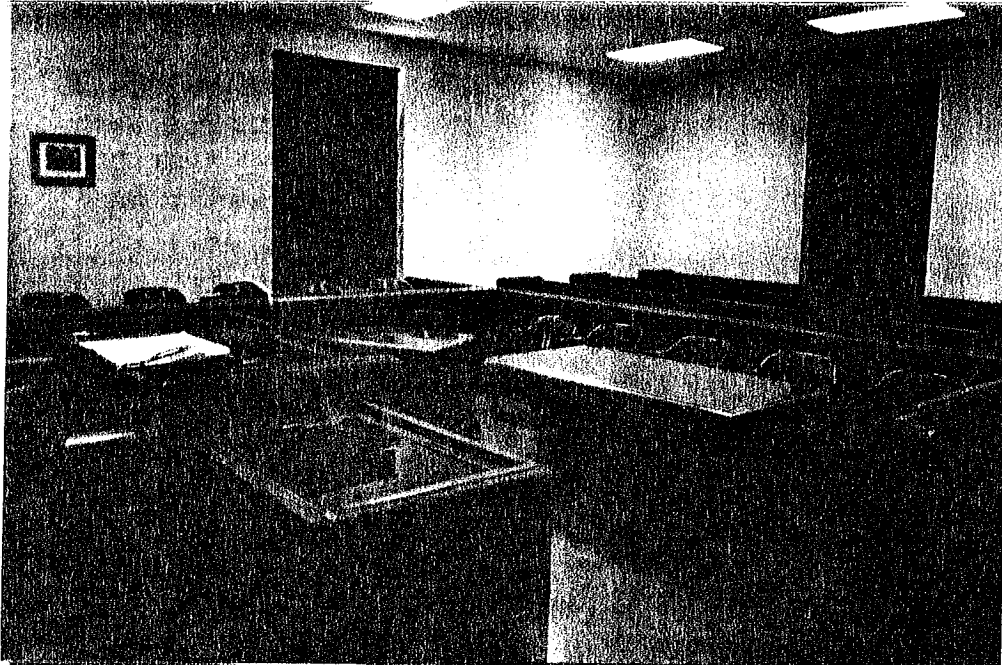
19. Courtroom,
Pret. 2, Pl. 1
Justice of the
Peace



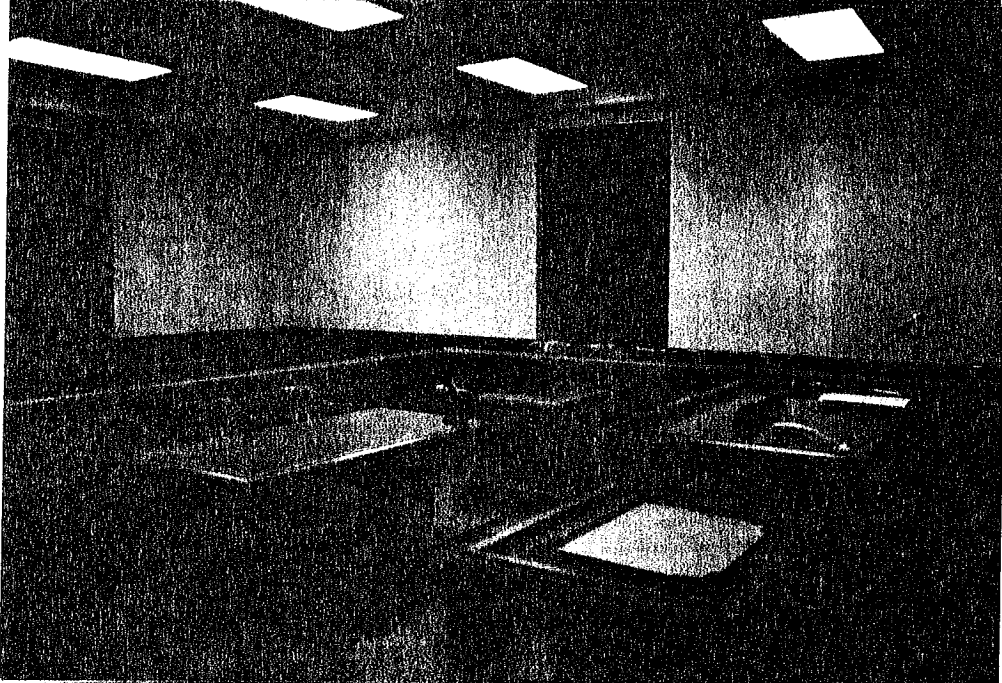
20. Courtroom
Pret. 2, Pl. 1
J.P.



21. Courtroom
Pret. 2, Pl. 1
J.P.



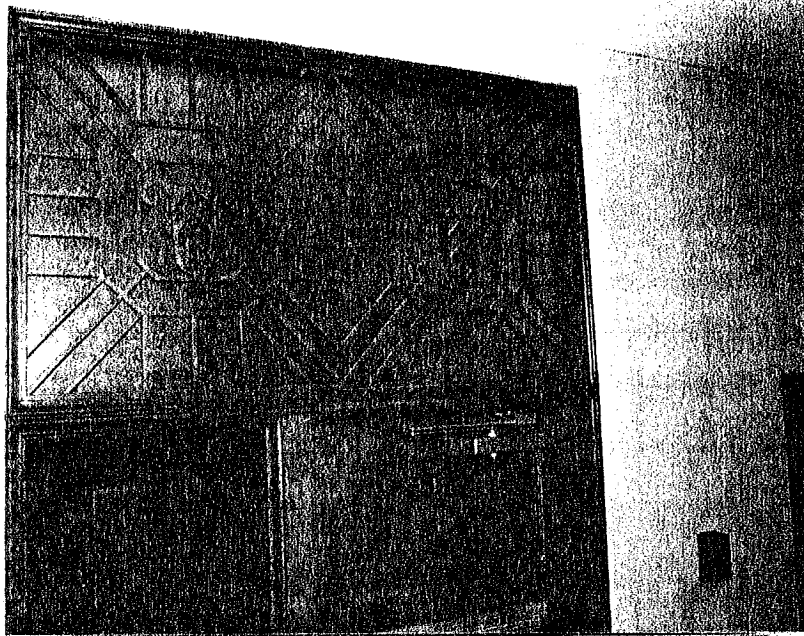
22. Courtroom
Prct. 2, Pl. 1
J.P.



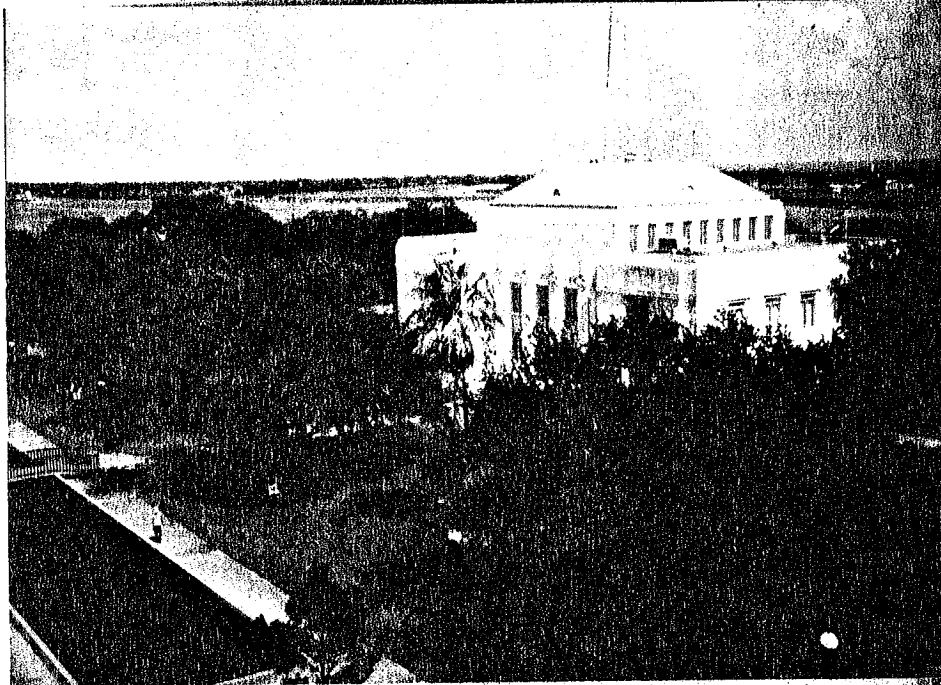
23, Courtroom
Prct. 2, Pl. 2
J.P.



24. Courtroom
Prct. 2, Pl. 2
U.P.



25. Grillwork over door, Courtroom
Prct. 2, Pl. 2, J.P.

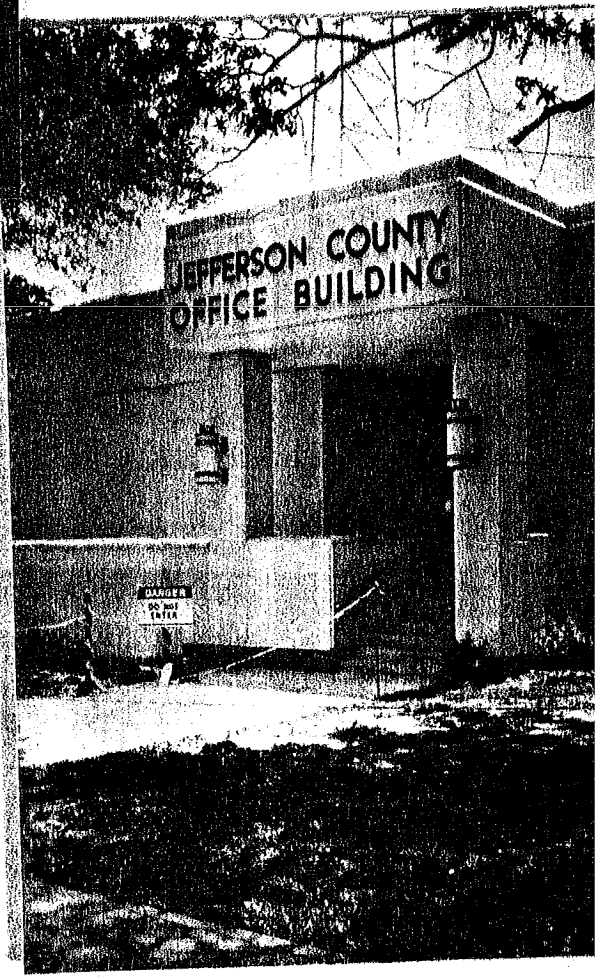


26. View of building from Port Arthur City Hall prior to construction of annex

(color)

27. Entrance to annex original lights

(color)



10002 11/11

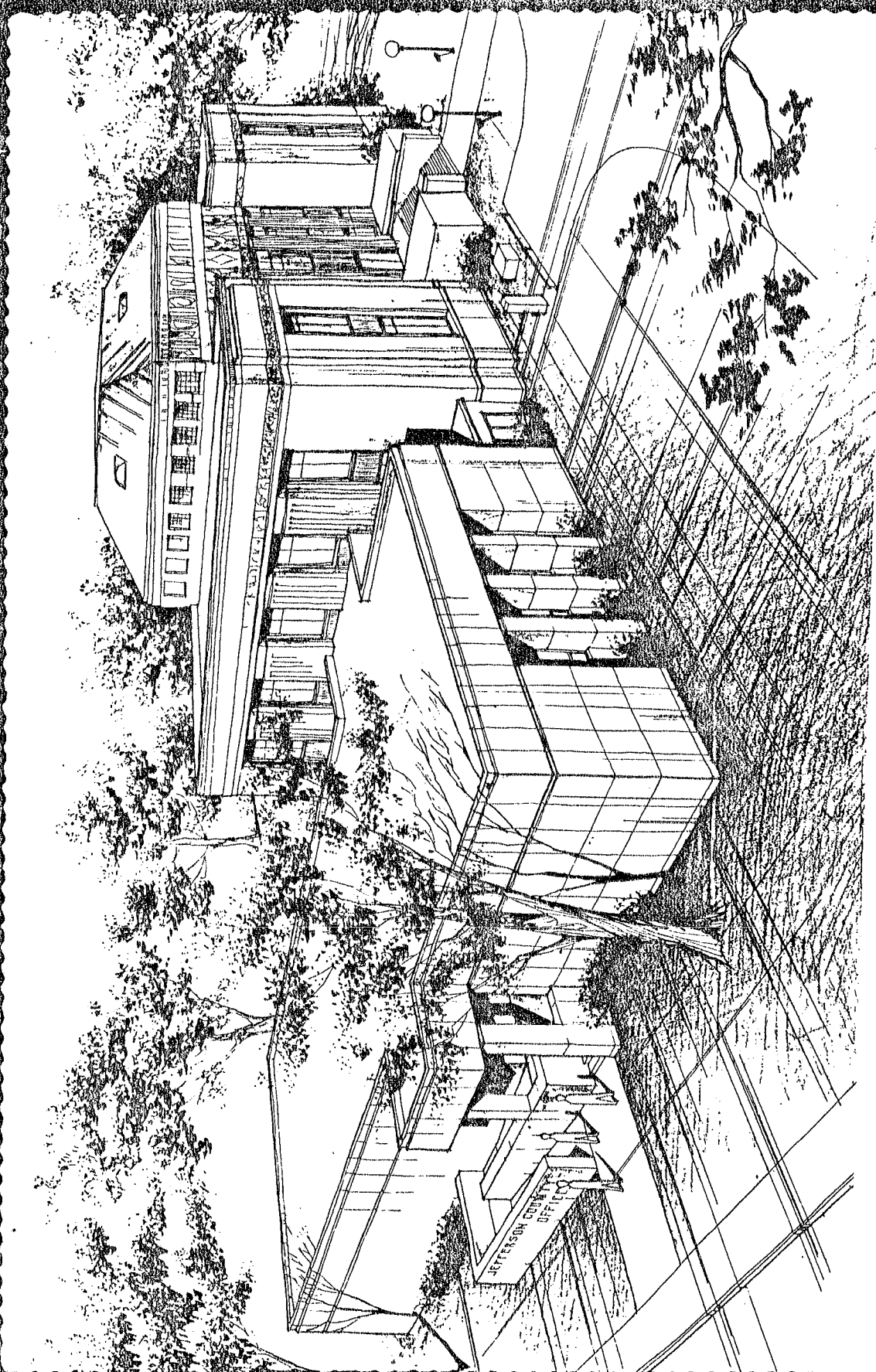
UNITED STATES
DEPARTMENT OF THE ARMY
CORPS OF ENGINEERS

PORT ARTHUR SOUTH QUADRANGLE
TEXAS—LOUISIANA
7.5 MINUTE SERIES (TOPOGRAPHIC)
SW/4 PORT ARTHUR 15' QUADRANGLE

7243 IV NW
(WEST OF
GREEN'S BAYOU)
69

408 409 (PORT ARTHUR NORTH) 410 411 55' 412 413 414 3 620 000 FEET (TEX.) 93°52'30" 29°52'30"





Mr. Pat Gilbert, Chairman
630 Genoa, Beaumont 77705
(409) 832-1795

Mr. Bruce Hamilton
Vice-chairman

Mrs. Z. H. Wright, Jr.
Coordinator
(409) 835-8701



Mrs. Pat Wood, Jr.
Secretary
Mr. Gerry Doyle
Marker Chairman
Mr. William Quick
Editor
Mrs. W. B. Hataway and
Mrs. Willard Hall
Courthouse Oversight
Co-chairmen

JEFFERSON COUNTY HISTORICAL COMMISSION
P.O.Box 4025, Beaumont, TX 77704

March 2, 1989

Mrs. Francis Rickard
Marker Program
Texas Historical Commission
P.O. Box 12276
Austin, TX 78711

Dear Francis:

Re: Jefferson County
South County Office Building

On Monday, February 27th, I placed in the mail
an application for marker for the above captioned.

Too late to intercept the mailing, Commissioner
Smith's secretary called to question page 4,
paragraph 3. Upon re-reading, I realized I had
omitted a sentence..

"The tax office was transferred to the annex."

I have Xeroxed the page, inserting the above
sentence by asterisk, and ask the enclosed page
be substituted for the original.

I apologize for this inconvenience.

Yours truly,

Mildred S. Wright
Coordinator

msw
enc.

Mr. Pat Gilbert, Chairman
630 Genoa, Beaumont 77705
(409) 832-1795

Mr. Bruce Hamilton
Vice-chairman

Mrs. Z. H. Wright, Jr.
Coordinator
(409) 835-8701



Mrs. Pat Wood, Jr.
Secretary
Mr. Gerry Doyle
Marker Chairman
Mr. William Quick
Editor
Mrs. W. B. Hataway and
Mrs. Willard Hall
Courthouse Oversight
Co-chairmen

JEFFERSON COUNTY HISTORICAL COMMISSION
P.O. Box 4025, Beaumont, TX 77704

February 23, 1989

Marker Program
Texas Historical Commission
P.O. Box 12276
Austin, TX 78711

Dear Mrs. Rickard:

Re: Jefferson County

We are pleased to submit an application for the South County Office Building "Sub-courthouse" located in Port Arthur, Texas.

We have indicated A RTHL designation as a law was passed to provide for such a county agency (see Gammel's LAWS included) as well as the architecturally preserved nature of the structure.

Yours truly,

Mildred S. Wright
Mildred S. Wright
Coordinator

msw
enc.